

Installation Instructions

NOTE: Read the entire instruction manual before starting the installation.

SAFETY CONSIDERATIONS:

Improper installation, adjustment, alteration, service, maintenance, or use can cause explosion, fire, electrical shock, or other conditions which may cause personal injury or property damage.

Follow all safety codes. Wear safety glasses and work gloves. Have a fire extinguisher available. Read these instructions thoroughly and follow all warnings or cautions attached to the unit.

REPLACEMENT GROUND SPRING KIT

This kit was developed to replace damaged or missing grounding springs inside the GAPA purifier cabinet. The grounding springs are required for both electrical safety and to increase the performance of the purifier.

Kit Contents

Remove all components from the packaging and verify that all parts are included in the kit. See Fig. 1.

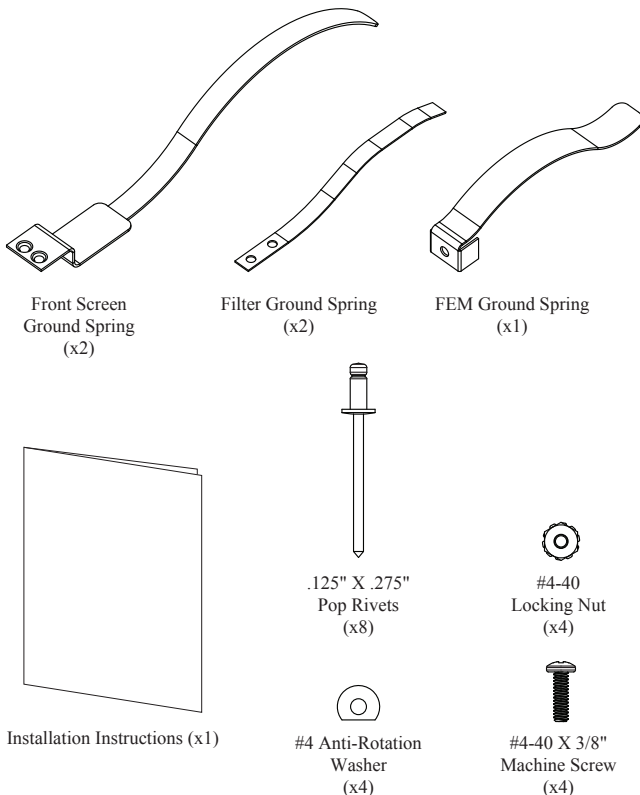


Fig. 1 - Kit Contents

IMPORTANT NOTE: If the ground springs are being replaced due to corrosion, it is necessary to resolve the root cause of water or moisture entering the purifier. The purifier should not be exposed to water, excess humidity, or condensate. If the cause of the moisture entering the purifier is not resolved, future corrosion requiring repeated spring replacement or complete unit failure is likely.

GROUNDING SPRING INSTALLATION

Prior to starting the spring installation(s), turn off the purifier, remove the front door, disconnect the power cord and air flow sensor cable (if installed) from the filter enhancement module (FEM), and remove both the FEM and the filter from the cabinet.

⚠ CAUTION

CUT HAZARD

Failure to follow this caution may result in personal injury.

Sheet metal parts may have sharp edges or burrs. Use care and wear appropriate protective clothing and gloves when handling parts.

FEM Spring Installation

1. Using a Phillips head screwdriver, loosen and remove the screw and star washer securing the ground spring to the cabinet. See Fig. 2.
2. Remove the spring.
3. Install the new spring and secure to the cabinet with the Phillips head screw. Tighten the screw.

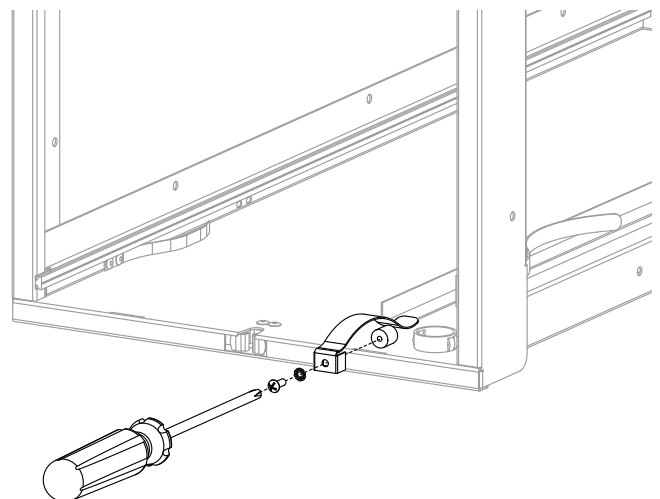


Fig. 2 - FEM Spring Replacement

Front Screen Spring Installation

Before the front screen ground spring can be replaced, all of the old hardware must be removed:

1. Using a power drill and a 1/4" (7mm) drill bit, remove the head of the rivet. See Fig. 3.
2. Detach the spring from the cabinet.
3. Remove the remaining body of the rivet being careful not to increase the size of the existing hole in the cabinet rail.

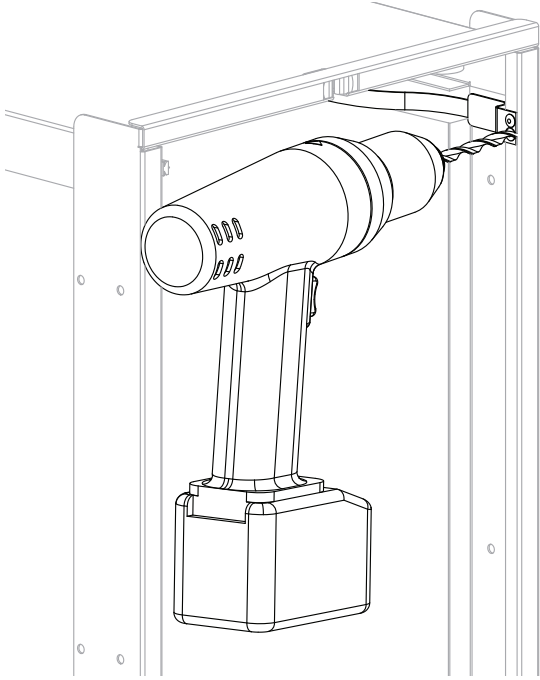


Fig. 3 - Front Screen Ground Spring Disassembly

4. After the mounting hole on the cabinet frame is cleared, install the new ground spring using a standard pop-rivet tool and two stainless steel rivets included in the kit. See Fig. 4.

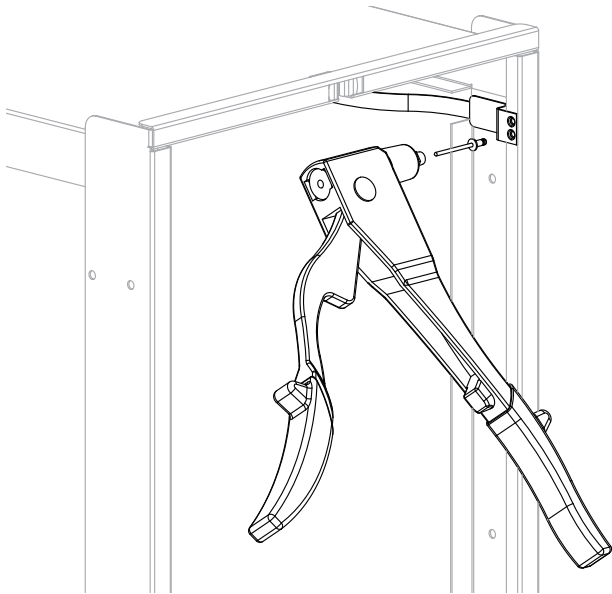


Fig. 4 - Front Screen Ground Spring Installation

Filter Ground Spring Installation

The filter ground springs are removed and installed similar to the front screen springs. However, the use of a right-angle drill may make the removal of the damaged/defective spring easier in certain purifier installations.

Note: There are two sets of mounting holes on each rail that the ground springs are mounted to. Prior to removal of the springs, make sure to mark which holes are used, and take note of the spring's orientation on the rail. Both the top and bottom filter ground springs must be mounted on the set of holes that are located toward the front opening of the cabinet. See Fig. 5 for the location and orientation of the springs.

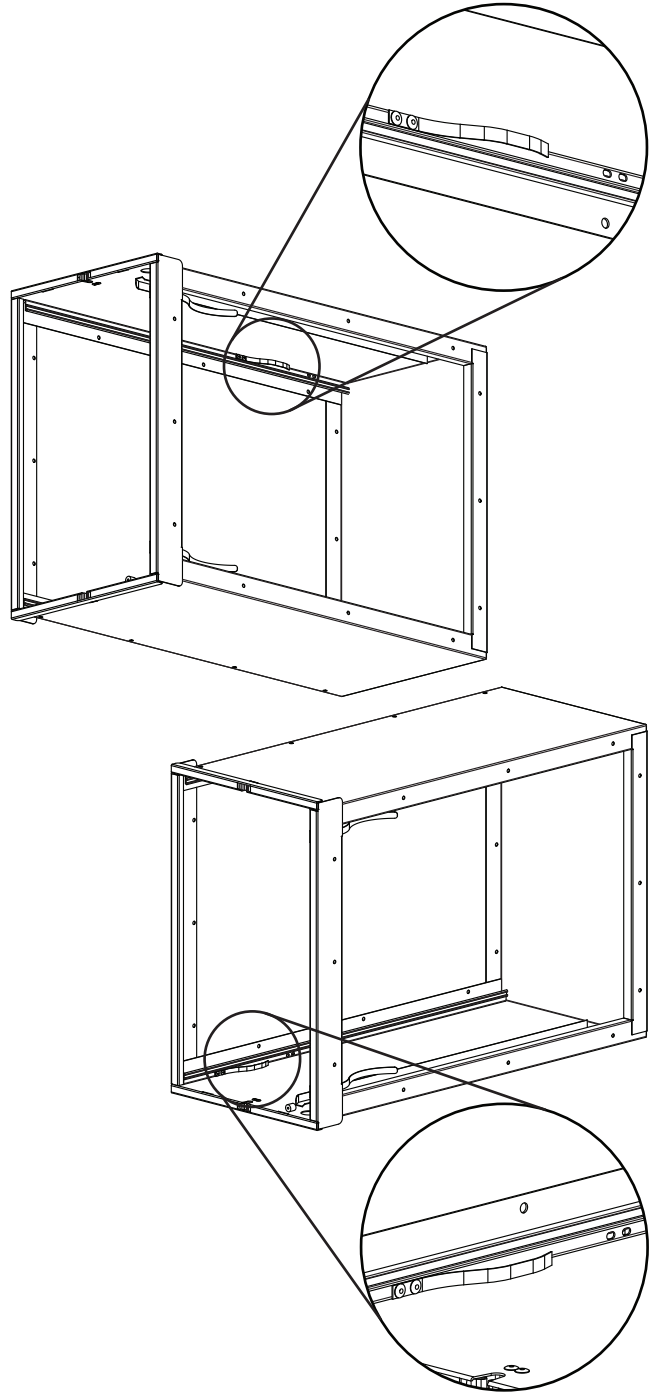


Fig. 5 - Filter Ground Spring Orientation

Alternate Filter Ground Spring Installation

In the event that the mounting holes for the filter ground springs are damaged during the removal process which prevents the pop-rivets from securing the spring, a set of screws, washers, and nuts have been provided as an alternative attachment method.

1. Insert the screws through mounting holes on the new filter ground spring.
2. Insert the screws through the mounting holes on the fin seal rail on the inside of the cabinet making sure to orient the springs in the correct direction.
3. Slide the anti-rotation washers over the ends of the screws. The flat side of the washer should be seated on the fin seal rails. See Fig. 6.
4. Secure the screw using the nut and tighten.

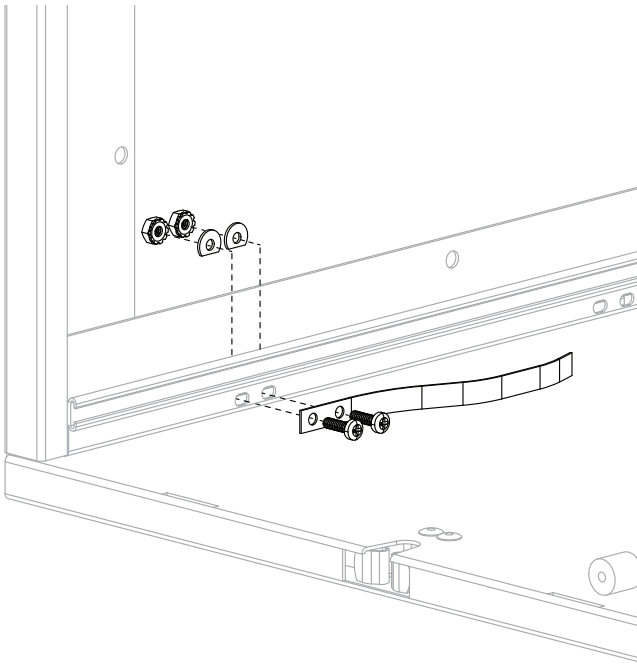


Fig. 6 – Alternate Filter Ground Spring Attachment

Component Replacement, Power-Up, and Verification

Upon completion of the new ground spring(s) installation:

1. Insert the FEM and filter into the cabinet making sure to orient both so they are aligned with the air flow direction
2. Connect the power cord and air flow sensor cable (if installed) to the power supply module on the FEM
3. Replace the front door
4. Turn the purifier on using the power switch on the door
5. Verify the power indicator light illuminates while the purifier is operating (this may require the furnace or fan coil to be operating as well).

