

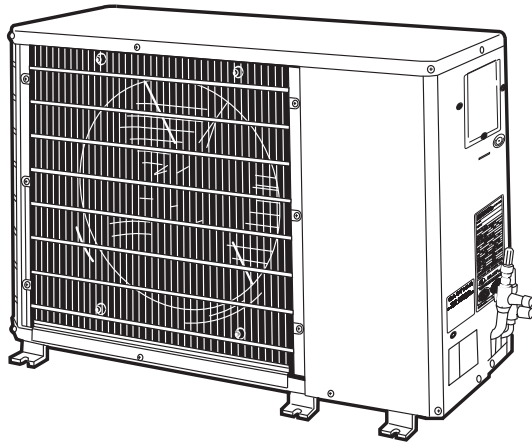
PA13NAZ

DUCTED CONDENSING UNITS

Sizes 018 To 060

1.5 To 5 Nominal Tons

Product Data



A08379

INDUSTRY LEADING FEATURES / BENEFITS

Energy Efficiency

- 13 - 14.5 SEER/ 11 - 12 EER

Sound

- Levels as low as 70 dBA

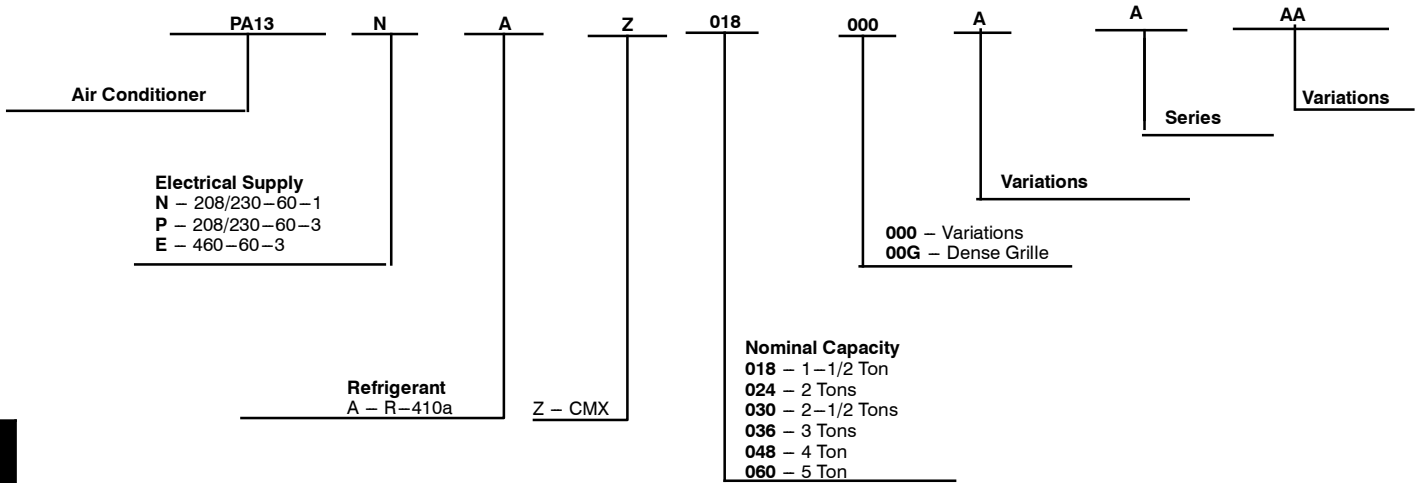
Design Features

- Small footprint, same as old model and “stackable”
- All steel cabinet construction
- Baked on powder paint
- Mesh coil guard

Reliability, Quality and Toughness

- Scroll compressor
- Factory-supplied filter drier
- High pressure switch
- Line lengths up to 250 ft (76 m)
- Low ambient operation (down to -20°F/-28.9°C) with low ambient accessories.

MODEL NUMBER NOMENCLATURE



PA13NAZ

PHYSICAL DATA

UNIT PA13NAZ	018–B	024–B	030–A	036–A	048–B	060–B
NOMINAL CAPACITY (Tons)	1.5	2.0	2.50	3.0	4.0	5.0
OPERATING WEIGHT lb (kg)	155 (70.3)	180 (81.6)	200 (90.7)	218 (98.9)	284 (128.8)	294 (133.4)
REFRIGERANT TYPE	R–410A					
METERING DEVICE	TXV					
CHARGE lb (kg)	6.3 (2.86)	6.0 (2.73)	8.7 (3.95)	8.7 (3.95)	11.5 (5.23)	12.0 (5.45)
COMPRESSOR	Scroll					
Type	Scroll					
Oil Charge (POE – oz)	25.0	25.0	25.0	25.0	42.0	42.0
Crankcase Heater (watts)	—	—	40	40	40	40
OUTDOOR FAN						
Rpm/Cfm	840/1720	840/1720	850/3900	850/3900	850/3900	850/3900
Diameter in. (mm)	18 (457)	18 (457)	24 (610)	24 (610)	24 (610)	24 (610)
No. Blades	3	3	3	3	3	3
Motor hp (w)	1/8 (93)	1/8 (93)	1/4 (187)	1/4 (187)	1/4 (187)	1/4 (187)
OUTDOOR COIL						
Face Area (sq ft)	5.8	7.3	12.1	12.1	14.1	14.1
No. Rows	2	2	2	2	2	2
FPI	20	20	20	20	20	20
HIGH PRESSURE SWITCH						
Cut–In (psig) Cutout (psig)	420 ± 25 650 ± 10	420 ± 25 650 ± 10	420 ± 25 650 ± 10	420 ± 25 650 ± 10	420 ± 25 650 ± 10	420 ± 25 650 ± 10
REFRIGERANT LINES						
Connection Type	Sweat					
Max. Liquid Line* (in.) OD	3/8	3/8	3/8	3/8	3/8	3/8
Rated Vapor Line† (in.) OD	5/8	5/8	3/4	3/4	7/8	1–1/8**
CONTROLS						
Control Voltage‡	24 vac					
System Voltage	208/230 v	208/230 v	208/230 v	208/230 v, Single and 3 Phase, 460 v, 3 Phase		
FINISH	Gray					

* See Liquid Line Sizing For Cooling Only Systems with R–410A Refrigerant tables.

† Units are rated with 25 ft (7.6 m) of lineset length. See Vapor Line Sizing and Cooling Capacity Loss table when using other sizes and lengths of lineset.

‡ 24 v and a minimum of 40 va is provided in the fan coil unit.

** Vapor connection size is 7/8 inch.

FPI – Fins Per Inch

POE – Polyol Ester

REFRIGERANT PIPING LENGTH LIMITATIONS

Liquid Line Sizing and Maximum Total Equivalent Lengths† for Cooling Only Systems with R-410A Refrigerant:

The maximum allowable length of a residential split system depends on the liquid line diameter and vertical separation between indoor and outdoor units.

See Table below for liquid line sizing and maximum lengths :

Maximum Total Equivalent Length Outdoor Unit BELOW Indoor Unit

Size	Liquid Line Connection	Liquid Line Diam. w/ TXV	AC with R-410A Refrigerant Maximum Total Equivalent Length†: Outdoor unit BELOW Indoor Vertical Separation ft (m)								
			0-5 (0-1.5)	6-10 (1.8-3.0)	11-20 (3.4-6.1)	21-30 (6.4-9.1)	31-40 (9.4-12.2)	41-50 (12.5-15.2)	51-60 (15.5-18.3)	61-70 (18.6-21.3)	71-80 (21.6-24.4)
018 AC with R-410A	3/8	1/4	150	150	125	100	100	75	--	--	--
		5/16	250*	250*	250*	250*	250*	250*	250*	225*	150
		3/8	250*	250*	250*	250*	250*	250*	250*	250*	250*
024 AC with R-410A	3/8	1/4	75	75	75	50	50	--	--	--	--
		5/16	250*	250*	250*	250*	250*	225*	175	125	100
		3/8	250*	250*	250*	250*	250*	250*	250*	250*	250*
030 AC with R-410A	3/8	1/4	30	--	--	--	--	--	--	--	--
		5/16	175	225*	200	175	125	100	75	--	--
		3/8	250*	250*	250*	250*	250*	250*	250*	250*	250*
036 AC with R-410A	3/8	5/16	175	150	150	100	100	100	75	--	--
		3/8	250*	250*	250*	250*	250*	250*	250*	250*	250*
048 AC with R-410A	3/8	3/8	250*	250*	250*	250*	250*	250*	230	160	--
060 AC with R-410A	3/8	3/8	250*	250*	250*	225*	190	150	110	--	--

* Maximum actual length not to exceed 200 ft (61 m)

† Total equivalent length accounts for losses due to elbows or fitting. See the Long Line Guideline for details.

-- = outside acceptable range

PA 13NAZ

Maximum Total Equivalent Length Outdoor Unit ABOVE Indoor Unit

Size	Liquid Line Connection	Liquid Line Diam. w/ TXV	AC with R-410A Refrigerant Maximum Total Equivalent Length†: Outdoor unit ABOVE Indoor Vertical Separation ft (m)								
			25 (7.6)	26-50 (7.9-15.2)	51-75 (15.5-22.9)	76-100 (23.2-30.5)	101-125 (30.8-38.1)	126-150 (38.4-45.7)	151-175 (46.0-53.3)	176-200 (53.6-61.0)	
018 AC with R-410A	3/8	1/4	175	250*	250*	250*	250*	250*	250*	250*	250*
		5/16	250*	250*	250*	250*	250*	250*	250*	250*	250*
		3/8	250*	250*	250*	250*	250*	250*	250*	250*	250*
024 AC with R-410A	3/8	1/4	100	125	175	200	225*	250*	250*	250*	250*
		5/16	250*	250*	250*	250*	250*	250*	250*	250*	250*
		3/8	250*	250*	250*	250*	250*	250*	250*	250*	250*
030 AC with R-410A	3/8	1/4	30	--	--	--	--	--	--	--	--
		5/16	250*	250*	250*	250*	250*	250*	250*	250*	250*
		3/8	250*	250*	250*	250*	250*	250*	250*	250*	250*
036 AC with R-410A	3/8	5/16	225*	250*	250*	250*	250*	250*	250*	250*	250*
		3/8	250*	250*	250*	250*	250*	250*	250*	250*	250*
048 AC with R-410A	3/8	3/8	250*	250*	250*	250*	250*	250*	250*	250*	250*
060 AC with R-410A	3/8	3/8	250*	250*	250*	250*	250*	250*	250*	250*	250*

* Maximum actual length not to exceed 200 ft (61 m)

† Total equivalent length accounts for losses due to elbows or fitting. See the Long Line Guideline for details.

-- = outside acceptable range

REFRIGERANT CHARGE ADJUSTMENTS

Liquid Line Size	R-410A Charge oz/ft (g/m)
3/8	0.60 (17.74) (Factory charge for lineset = 9 oz / 266.16 g)
5/16	0.40 (11.83)
1/4	0.27 (7.98)

Units are factory charged for 15 ft (4.6 m) of 3/8" liquid line. The factory charge for 3/8" lineset 9 oz (266.16 g). When using other length or diameter liquid lines, charge adjustments are required per the chart above.

Charging Formula:

$[(\text{Lineset oz/ft} \times \text{total length}) - (\text{factory charge for lineset})] = \text{charge adjustment}$

Example 1: System has 15 ft of line set using existing 1/4" liquid line. What charge adjustment is required?

Formula: $(.27 \text{ oz/ft} \times 15\text{ft}) - (9 \text{ oz}) = (-4.95) \text{ oz.}$

Net result is to remove 4.95 oz of refrigerant from the system

Example 2: System has 45 ft of existing 5/16" liquid line. What is the charge adjustment?

Formula: $(.40 \text{ oz/ft.} \times 45\text{ft}) - (9 \text{ oz.}) = 9 \text{ oz.}$

Net result is to add 9 oz of refrigerant to the system

LONG LINE APPLICATIONS

An application is considered Long Line, when the refrigerant level in the system requires the use of accessories to maintain acceptable refrigerant management for systems reliability. See Accessory Usage Guideline table for required accessories. Defining a system as long line depends on the liquid line diameter, actual length of the tubing, and vertical separation between the indoor and outdoor units.

For Air Conditioner systems, the chart below shows when an application is considered Long Line.

AC WITH R-410A® REFRIGERANT LONG LINE DESCRIPTION ft (m) Beyond these lengths, long line accessories are required

Liquid Line Size	Units On Same Level	Outdoor Below Indoor	Outdoor Above Indoor
1/4	No accessories needed within allowed lengths	No accessories needed within allowed lengths	175 (53.3)
5/16	120 (36.6)	50 (15.2) vertical or 120 (36.6) total	120 (36.6)
3/8	80 (24.4)	35 (10.7) vertical or 80 (24.4) total	80 (24.4)

Note: See Long Line Guideline for details

VAPOR LINE SIZING AND COOLING CAPACITY LOSS

Acceptable vapor line diameters provide adequate oil return to the compressor while avoiding excessive capacity loss. The suction line diameters shown in the chart below are acceptable for AC systems with R-410A refrigerant:

Vapor Line Sizing and Cooling Capacity Losses — R-410A® Refrigerant 1-Stage Air Conditioner Applications

Unit Nominal Size (Btuh)	Maximum Liquid Line Diameters (In. OD)	Vapor Line Diameters (In. OD)	Cooling Capacity Loss (%)									
			Total Equivalent Line Length ft. (m)									
			26-50 (7.9-15.2)	51-80 (15.5-24.4)	81-100 (24.7-30.5)	101-125 (30.8-38.1)	126-150 (38.4-45.7)	151-175 (46.0-53.3)	176-200 (53.6-61.0)	201-225 (61.3-68.6)	226-250 (68.9-76.2)	
018 1 Stage AC with R-410A	3/8	1/2	1	2	3	5	6	7	8	9	11	
		5/8	0	1	1	1	2	2	2	3	3	
		3/4	0	0	0	0	1	1	1	1	1	1
024 1 Stage AC with R-410A	3/8	5/8	0	1	2	2	3	3	4	5	5	
		3/4	0	0	1	1	1	1	1	2	2	
		7/8	0	0	0	0	0	1	1	1	1	1
030 1 Stage AC with R-410A	3/8	5/8	1	2	3	3	4	5	6	7	8	
		3/4	0	0	1	1	1	2	2	2	3	
		7/8	0	0	0	0	1	1	1	1	1	1
036 1 Stage AC with R-410A	3/8	5/8	1	2	4	5	6	8	9	10	12	
		3/4	0	1	1	2	2	3	3	4	4	
		7/8	0	0	0	1	1	1	1	2	2	
048 1 Stage AC with R-410A	3/8	3/4	0	1	2	3	4	5	5	6	7	
		7/8	0	0	1	1	2	2	2	3	3	
		1 1/8	0	0	0	0	0	0	0	1	1	
060 1 Stage AC with R-410A	3/8	3/4	1	2	4	5	6	7	9	10	11	
		7/8	0	1	2	2	3	4	4	5	5	
		1 1/8	0	0	0	1	1	1	1	1	1	

Applications in this area may be long line and may have height restrictions. See the *Residential Piping and Long Line Guideline*.

ACCESSORIES

KIT NUMBER	KIT NAME	018	024	030	036	048	060
KAACH1401AAA	Crankcase Heater	X	X	X	X		
KAACH1201AAA	Crankcase Heater					X	X
KAACS0201PTC	PTC Kit	X	X	X	X	X	X
KAFT0101AAA	Evaporator Freeze Stat	X	X	X	X	X	X
KAHI0501PUR	High Press. Switch	X	X	X	X	X	X
KAALP0401PUR	Low Press. Switch	X	X	X	X	X	X
KAALS0201LLS	Solenoid Valve	X	X	X	X	X	X
KAATD0101TDR	Time Delay Relay	X	X	X	X	X	X
KAWS0101AAA	Winter Start Kit (for low ambient)	X	X	X	X	X	X
KSACY0101AAA	Cycle Protector	X	X	X	X	X	X
KSAS1501AAA	Hard Start Kit	X	X	X	X	X	X
KSASH1801COP	Sound Blanket	X	X	X	X		
KSASH0601COP	Sound Blanket					X	X
KSALA0401410	Low Ambient Kit	X	X	X	X	X	X
KSATX0201PUR	TXV	X	X	X			
KSATX0301PUR	TXV				X		
KSATX0401PUR	TXV					X	
KSATX0501PUR	TXV						X
53DS-900---070	Wind Baffle	X					
53DS-900---087	Wind Baffle		X				
53DS-900---071	Wind Baffle			X	X		
53DS-900---088	Wind Baffle					X	X
53DS-900---075	Stacking Kit	X	X				
53DS-900---076	Stacking Kit			X	X	X	X
53DS-900---077	Wall Mounting Kit	X	X				
53DS-900---078	Wall Mounting Kit			X	X	X	X

X = Accessory, S = Standard

ACCESSORY USAGE GUIDELINE

ACCESSORY	REQUIRED FOR LOW-AMBIENT COOLING APPLICATIONS (Below 55°F/12.8°C)	REQUIRED FOR LONG LINE APPLICATIONS* (Over 80 ft. / 24.4 m)	REQUIRED FOR SEA COAST APPLICATIONS (Within 2 miles / 3.2 km)
Compressor Start Assist Capacitor and Relay	Yes	Yes	No
Crankcase Heater	Yes	Yes	No
Evaporator Freeze Thermostat	Yes	No	No
Hard Shutoff TXV	Yes	Yes	Yes
Liquid Line Solenoid Valve	No	See Longline Application Guideline	No
Low-ambient Control	Yes	No	No
Winter Start Control	Yes	No	No

* For tubing line sets between 80 and 200 ft. (24.38 and 60.96 m) and/or 35 ft. (10.7 m) vertical differential, refer to Residential Piping and Longline Guideline.

Accessory Description and Usage (Listed Alphabetically)

1. Crankcase Heater

An electric resistance heater which mounts to the base of the compressor to keep the lubricant warm during off cycles. Improves compressor lubrication on restart and minimizes the chance of liquid slugging.

Usage Guideline:

- Required in low ambient cooling applications.
- Required in long line applications.
- Suggested in all commercial applications.

2. Evaporator Freeze Thermostat

An SPST temperature-actuated switch that stops unit operation when evaporator reaches freeze-up conditions.

Usage Guideline:

- Required when low ambient kit has been added.

3. Low-Ambient Control

A fan-speed control device activated by a temperature sensor, designed to control condenser fan motor speed in response to the saturated, condensing temperature during operation in cooling mode only. For outdoor temperatures down to -20°F (-28.9°C), it maintains condensing temperature at 100°F ±10°F (37.8°C ± 5.5°C).

Usage Guideline:

- A Low Ambient Controller must be used when cooling operation is used at outdoor temperatures below 55°F (12.8°C).

Suggested for all commercial applications.

4. Outdoor Air Temperature Sensor

Designed for use with Payne Thermostats listed in this publication. This device enables the thermostat to display the outdoor temperature. This device also

is required to enable special thermostat features such as auxiliary heat lock out.

Usage Guideline:

- Suggested for all Payne thermostats listed in this publication.

5. Thermostatic Expansion Valve (TXV)

A modulating flow-control valve which meters refrigerant liquid flow rate into the evaporator in response to the superheat of the refrigerant gas leaving the evaporator.

Kit includes valve, adapter tubes, and external equalizer tube. Hard shut off types are available.

NOTE: When using a hard shut off TXV with single phase reciprocating compressors, a Compressor Start Assist Capacitor and Relay is required.

Usage Guideline:

- Accessory required to meet ARI rating and system reliability, where indoor not equipped.
- Hard shut off TXV or LLS required in air conditioner long line applications.
- Required for use on all zoning systems.

6. Time-Delay Relay

An SPST delay relay which briefly continues operation of indoor blower motor to provide additional cooling after the compressor cycles off.

NOTE: Most indoor unit controls include this feature. For those that do not, use the guideline below.

Usage Guideline:

- Accessory required to meet ARI rating, where indoor not equipped.

7. Winter Start Control

This control is designed to alleviate nuisance opening of the low-pressure switch by bypassing it for the first 3 minutes of operation.

ELECTRICAL DATA

PA13NAZ UNIT SIZE	V-PH-Hz	VOLTAGE RANGE*		COMPRESSOR		OUTDOOR FAN MOTOR			MIN CKT AMPS	FUSE/CKT BKR AMPS
		Min	Max	RLA	LRA	FLA	NEC Hp	kW Out		
018-A	208/230-1-60	187	253	9.0	48.0	0.8	0.125	0.09	12.1	20
024-B	208/230-1-60	187	253	13.5	58.3	0.8	0.125	0.09	17.7	25
030-A	208/230-1-60	187	253	14.1	73.0	1.5	0.250	0.19	19.1	30
036-A	208/230-1-60	187	253	14.1	77.0	1.5	0.250	0.19	19.1	30
	208/230-3-60	187	253	9.2	71.0	1.5	0.250	0.19	13.0	20
048-B	460-3-60	414	506	5.6	38.0	0.8	0.250	0.19	7.9	10
	208/230-1-60	187	253	19.9	109.0	1.5	0.250	0.19	26.4	40
	208/230-3-60	187	253	13.1	83.1	1.5	0.250	0.19	17.9	25
060-B	460-3-60	414	506	6.1	41.0	0.8	0.250	0.19	8.4	15
	208/230-1-60	187	253	26.4	134.0	1.5	0.250	0.19	34.5	60
	208/230-3-60	187	253	15.0	110.0	1.5	0.250	0.19	21.5	30
	460-3-60	414	506	7.8	52.0	0.8	0.250	0.19	10.6	15

* Permissible limits of the voltage range at which the unit will operate satisfactorily

FLA – Full Load Amps

HACR – Heating, Air Conditioning, Refrigeration

LRA – Locked Rotor Amps

NEC – National Electrical Code

RLA – Rated Load Amps (compressor)

NOTE: Control circuit is 24-V on all units and requires external power source. Copper wire must be used from service disconnect to unit. All motors/compressors contain internal overload protection.

Complies with 2007 requirements of ASHRAE Standards 90.1

PA13NAZ

A-WEIGHTED SOUND POWER LEVEL

Unit Size	Standard Rating (dBA)	Standard Rating (dBA) With Sound Blanket	Typical Octave Band Spectrum (dBA, without tone adjustment)						
			125	250	500	1000	2000	4000	8000
018	70		51.5	56.5	63.5	62.5	60.5	57.0	45.5
		69	50.0	57.0	60.5	62.0	60.0	56.0	44.5
024	73		59.5	64.0	65.5	68.5	61.0	57.0	46.0
		72	56.0	64.0	66.0	69.0	62.5	58.0	47.5
030	74		58.5	62.0	65.5	66.5	66.5	65.0	58.0
		73	59.0	62.5	65.5	66.5	67.0	65.0	58.0
036	74		59.0	64.5	70.5	70.5	67.0	65.0	56.5
		73	59.0	63.0	64.5	69.5	66.5	64.5	56.0
048	74		63.0	64.5	67.5	67.5	65.5	63.0	55.0
		73	63.0	64.5	67.5	67.5	65.5	63.0	55.0
060	74		60.5	62.5	65.5	64.5	64.0	62.5	53.5
		73	60.5	62.0	65.0	64.0	63.5	62.0	53.5

NOTE: Tested in accordance with ARI Standard 270-08 (not listed in ARI).

CHARGING SUBCOOLING (TXV-TYPE EXPANSION DEVICE)

UNIT SIZE-VOLTAGE, SERIES	REQUIRED SUBCOOLING °F (°C)
018-A	12 (6.7)
024-B	12 (6.7)
030-A	12 (6.7)
036-A	12 (6.7)
048-B	12 (6.7)
060-B	12 (6.7)

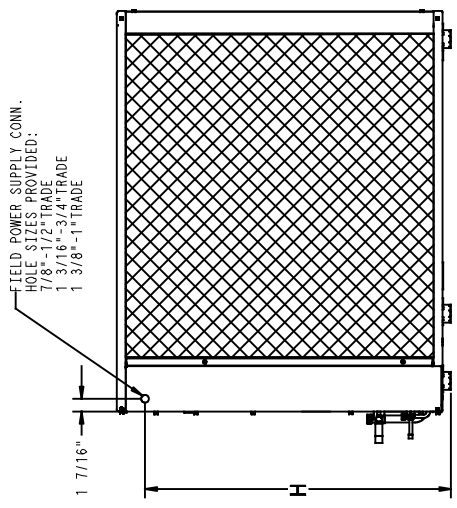
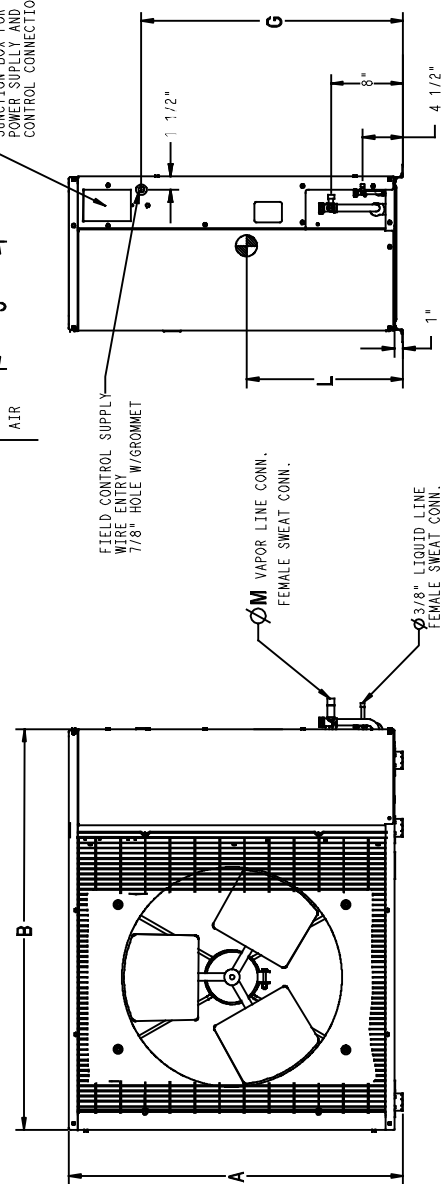
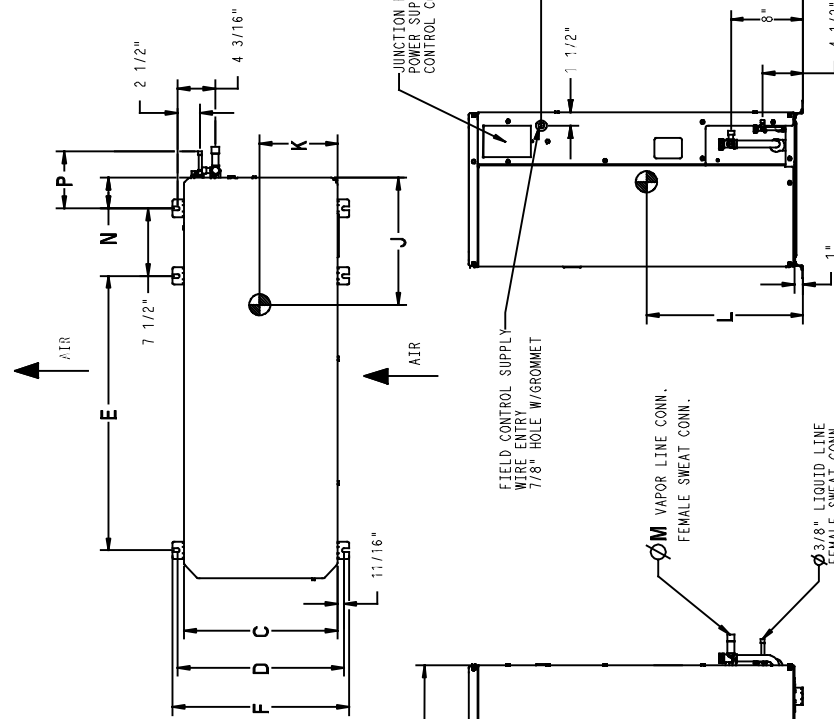
PA13NAZ

DIMENSIONS - ENGLISH

UNIT SERIES	ELECTRICAL CHARACTERISTICS	A	B	C	D	E	F	G	H	J	K	L	M	N	P	OPERATING WEIGHT(lbs)	SHIPPING WEIGHT(lbs)	SHIPPING DIMENSIONS (L x W x H)
PA13AZ18	X	0	0	0	25 1/8"	36 15/16"	14 9/16"	17 1/8"	22"	13"	6 5/8"	11 1/4"	5/8"	2 15/16"	6"	155	171	42 9/10" X 18" X 28 1/10"
PA13AZ24	A,B	X	0	0	31 1/8"	36 15/16"	14 9/16"	17 3/16"	23 1/8"	14"	6 3/4"	11 5/8"	5/8"	2 15/16"	6"	180	198	42 9/10" X 18" X 34 1/10"
PA13AZ30	A	X	0	0	37 3/16"	44 9/16"	17 1/16"	19 5/8"	29 3/16"	13 11/16"	8 1/8"	15 7/8"	3/4"	3 7/16"	6 1/2"	200	223	50 1/2" X 20 1/2" X 40 2/10"
PA13AZ36	A	X	0	0	37 3/16"	44 9/16"	17 1/16"	19 5/8"	29 3/16"	13 11/16"	8 1/8"	15 7/8"	3/4"	3 7/16"	6 1/2"	218	240	50 1/2" X 20 1/2" X 40 2/10"
PA13AZ48	A,B	X	0	X	43 3/16"	44 9/16"	17 1/16"	19 5/8"	35 3/16"	14 1/2"	8 1/2"	18 7/8"	7/8"	3 7/16"	6 1/2"	284	309	50 1/2" X 20 1/2" X 46 2/10"
PA13AZ60	A,B	X	0	X	43 3/16"	44 9/16"	17 1/16"	19 5/8"	35 3/16"	14 1/2"	8 1/2"	18 7/8"	7/8"	3 7/16"	6 1/2"	284	319	50 1/2" X 20 1/2" X 46 2/10"

X = YES
0 = NO

- REQUIRED CLEARANCES: WITH COIL FACING WALL: ALLOW 6" MIN CLEARANCE ON COIL SIDE AND COIL END AND 36" WITH CLEARANCE ON COMPRESSOR END AND FAN SIDE WITH FAN FACING WALL: ALLOW 8" MIN CLEARANCE ON FAN SIDE AND COIL END AND 36" MIN CLEARANCE ON COMPRESSOR END AND COIL SIDE WITH MULTI UNIT APPLICATION: ARRANGE UNITS SO DISCHARGE OF ONE DOES NOT ENTER INLET OF ANOTHER.
- MINIMUM OUTDOOR OPERATING AMBIENT IN COOLING MODE IS 55°F, MAX. 125°F.
- SERIES DESIGNATION IS THE 14TH POSITION OF THE UNIT MODEL NUMBER.
- CENTER OF GRAVITY
- ALL DIMENSIONS ARE IN "INCHES" UNLESS NOTED.



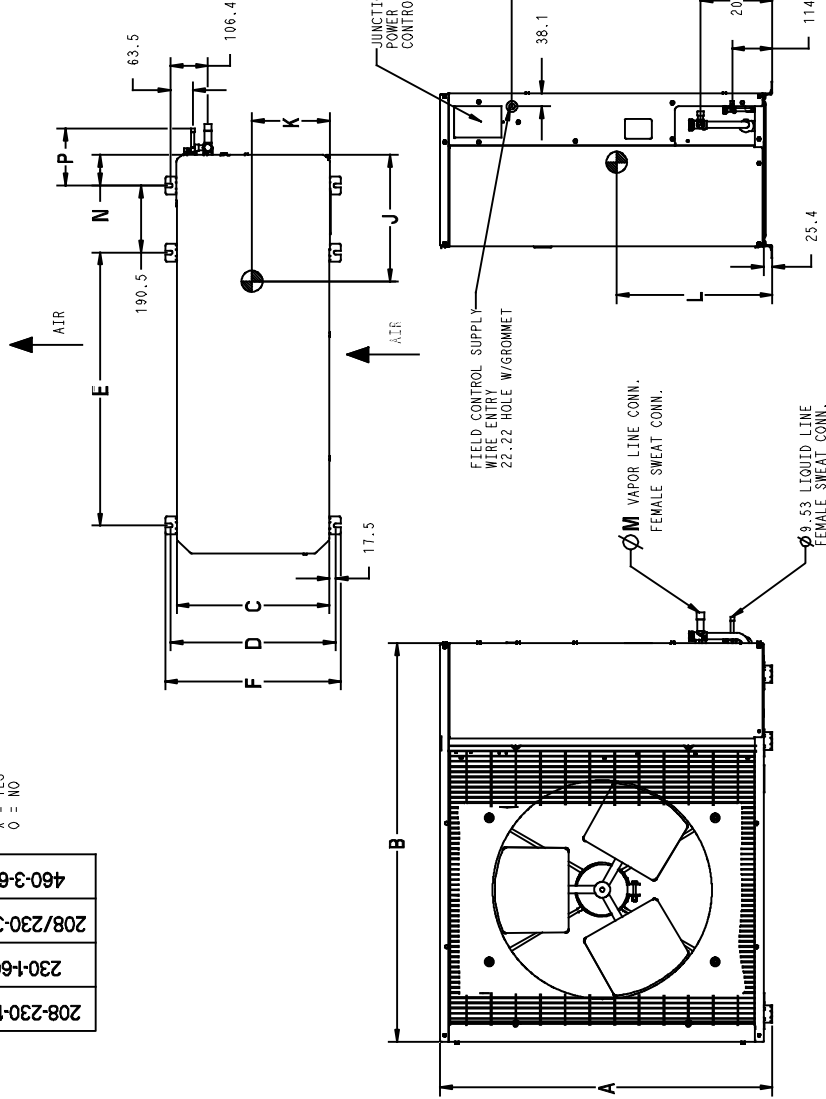
UNIT SIZE	MINIMUM MOUNTING PAD DIMENSIONS
18, 24	23" X 42"
30, 36, 48, 60	24" X 50"

DIMENSIONS - SI

UNIT SERIES	ELECTRICAL CHARACTERISTICS	A	B	C	D	E	F	G	H	J	K	L	M	N	P	OPERATING WEIGHT(KG)	SHIPPING WEIGHT(KG)	SHIPPING DIMENSIONS (L x W x H)	
PA13A718	A	X	0	0	638.2	938.2	369.9	406.4	595.3	436.6	435.0	558.8	330.2	168.3	285.8	15.9	74.6	152.4	1090.2 X 457.7 X 714.3
PA13A724	A,B	X	0	0	790.6	938.2	369.9	406.4	595.3	436.6	587.4	711.2	355.6	171.5	295.3	15.9	74.6	152.4	1090.2 X 457.7 X 866.7
PA13A730	A	X	0	0	944.6	1131.9	433.4	468.3	714.7	498.5	741.4	865.2	347.7	206.4	403.2	19.0	81.3	165.1	1282.7 X 520.7 X 1020.7
PA13A736	A	X	0	0	944.6	1131.9	433.4	468.3	714.7	498.5	741.4	865.2	347.7	206.4	403.2	19.0	81.3	165.1	1282.7 X 520.7 X 1020.7
PA13A748	A,B	X	0	0	1097.0	1131.9	433.4	468.3	714.7	498.5	893.8	1071.6	368.3	215.9	418.4	22.2	81.3	165.1	1282.7 X 520.7 X 1173.1
PA13A760	A,B	X	0	0	1097.0	1131.9	433.4	468.3	714.7	498.5	893.8	1071.6	368.3	215.9	418.4	22.2	81.3	165.1	1282.7 X 520.7 X 1173.1

X = YES
O = NO

- REQUIRED CLEARANCES: WITH COIL FACING WALL: ALLOW 152.4 MIN CLEARANCE ON COIL SIDE AND COIL END AND 914.4 MIN CLEARANCE ON COMPRESSOR END AND FAN SIDE. WITH FAN FACING WALL: ALLOW 203.2 MIN CLEARANCE ON FAN SIDE AND COIL END AND 914.4 MIN CLEARANCE ON COMPRESSOR END AND COIL SIDE. WITH MULTI UNIT APPLICATION: ARRANGE UNITS SO DISCHARGE OF ONE DOES NOT ENTER INLET OF ANOTHER.
- MINIMUM OUTDOOR OPERATING AMBIENT IN COOLING MODE IS 12.8°C, MAX. 51.7°C.
- SERIES DESIGNATION IS THE 14TH POSITION OF THE UNIT MODEL NUMBER.
- CENTER OF GRAVITY
- ALL DIMENSIONS ARE IN "MM" UNLESS NOTED.



UNIT SIZE	MINIMUM MOUNTING PAD DIMENSIONS
18.24	584.2 X 1066.8
30, 36, 46, 60	609.6 X 1270.0

PA13NAZ

AHRI* COMBINATION RATINGS

PA13NAZ

ARI Ref. No.	Model Number	Indoor Model	Furnace Model	Capacity	EER @ A**	SEER
3092030	PA13NAZ18-A	†CNPV*1814A**+TDR		17,000	11.0	13.0
3092031	PA13NAZ18-A	CAP**1814A**	PG8*EA024045	17,000	11.5	14.0
3092033	PA13NAZ18-A	CAP**2414A**	PG8*EA024045	17,400	12.0	14.5
3092032	PA13NAZ18-A	CAP**2414A**+TDR		17,400	11.0	13.0
3095625	PA13NAZ18-A	CAP**2417A**	PG9MXA036060	17,400	12.0	14.5
3092034	PA13NAZ18-A	CAP**2417A**+TDR		17,400	11.0	13.0
3092042	PA13NAZ18-A	CNPF*2418A**+TDR		17,400	11.0	13.0
3092040	PA13NAZ18-A	CNPH*2417A**	PG8*EA024045	17,400	12.0	14.5
3092605	PA13NAZ18-A	CNPH*2417A**	PG9MTAV36050*A**	17,400	12.0	14.5
3092041	PA13NAZ18-A	CNPH*2417A**	PG9MTAV36075*A**	17,400	12.0	14.5
3095412	PA13NAZ18-A	CNPH*2417A**	PG9MXA036060	17,400	12.0	14.5
3092039	PA13NAZ18-A	CNPH*2417A**+TDR		17,400	11.0	13.0
3092035	PA13NAZ18-A	CNPV*1814A**	PG8*EA024045	17,000	11.5	14.0
3092037	PA13NAZ18-A	CNPV*2414A**	PG8*EA024045	17,400	12.0	14.5
3092036	PA13NAZ18-A	CNPV*2414A**+TDR		17,400	11.0	13.0
3095626	PA13NAZ18-A	CNPV*2417A**	PG9MXA036060	17,400	12.0	14.5
3092038	PA13NAZ18-A	CNPV*2417A**+TDR		17,400	11.0	13.0
3092044	PA13NAZ18-A	CSPH*2412A**	PG8*EA024045	17,400	12.0	14.5
3092045	PA13NAZ18-A	CSPH*2412A**	PG9MTAV36050*A**	17,400	12.0	14.5
3092046	PA13NAZ18-A	CSPH*2412A**	PG9MTAV36075*A**	17,400	12.0	14.5
3095413	PA13NAZ18-A	CSPH*2412A**	PG9MXA036060	17,400	12.0	14.5
3092043	PA13NAZ18-A	CSPH*2412A**+TDR		17,400	11.0	13.0
3092049	PA13NAZ18-A	FF1ENP024		17,400	11.0	13.0
3092047	PA13NAZ18-A	PF4MNA019		17,000	11.5	14.0
3092048	PA13NAZ18-A	PF4MNA025		17,400	12.0	14.5
3466392	PA13NAZ24-B	†CNPV*2414A**+TDR		23,400	11.0	13.0
3466394	PA13NAZ24-B	CAP**2414A**	PG8*EA024045	23,400	11.5	14.0
3466393	PA13NAZ24-B	CAP**2414A**+TDR		23,400	11.0	13.0
3466396	PA13NAZ24-B	CAP**2417A**	PG9MXA036060	23,400	11.5	14.0
3466397	PA13NAZ24-B	CAP**2417A**	PG9MXA036080	23,400	11.5	14.0
3466395	PA13NAZ24-B	CAP**2417A**+TDR		23,400	11.0	13.0
3466399	PA13NAZ24-B	CAP**3014A**	PG8*EA024045	23,600	12.0	14.5
3466398	PA13NAZ24-B	CAP**3014A**+TDR		23,600	11.0	13.0
3466401	PA13NAZ24-B	CAP**3017A**	PG9MXA036060	23,600	12.0	14.5
3466402	PA13NAZ24-B	CAP**3017A**	PG9MXA036080	23,600	12.0	14.5
3466400	PA13NAZ24-B	CAP**3017A**+TDR		23,600	11.0	13.0
3466428	PA13NAZ24-B	CNPF*2418A**+TDR		23,400	11.0	13.0
3466413	PA13NAZ24-B	CNPH*2417A**	PG8*EA024045	23,400	11.5	14.0
3466416	PA13NAZ24-B	CNPH*2417A**	PG9MTAV36050*A**	23,400	11.5	14.0
3466417	PA13NAZ24-B	CNPH*2417A**	PG9MTAV36075*A**	23,400	11.5	14.0
3466418	PA13NAZ24-B	CNPH*2417A**	PG9MTAV60100*A**	23,400	11.5	14.0
3466419	PA13NAZ24-B	CNPH*2417A**	PG9MTAV60125*A**	23,400	11.5	14.0
3466414	PA13NAZ24-B	CNPH*2417A**	PG9MXA036060	23,400	11.5	14.0
3466415	PA13NAZ24-B	CNPH*2417A**	PG9MXA036080	23,400	11.5	14.0
3466412	PA13NAZ24-B	CNPH*2417A**+TDR		23,400	11.0	13.0
3466421	PA13NAZ24-B	CNPH*3017A**	PG8*EA024045	23,600	12.0	14.5
3466424	PA13NAZ24-B	CNPH*3017A**	PG9MTAV36050*A**	23,600	12.0	14.5
3466425	PA13NAZ24-B	CNPH*3017A**	PG9MTAV36075*A**	23,600	12.0	14.5
3466426	PA13NAZ24-B	CNPH*3017A**	PG9MTAV60100*A**	23,600	12.0	14.5
3466427	PA13NAZ24-B	CNPH*3017A**	PG9MTAV60125*A**	23,600	12.0	14.5
3466422	PA13NAZ24-B	CNPH*3017A**	PG9MXA036060	23,600	12.0	14.5
3466423	PA13NAZ24-B	CNPH*3017A**	PG9MXA036080	23,600	12.0	14.5
3466420	PA13NAZ24-B	CNPH*3017A**+TDR		23,600	11.0	13.0
3466403	PA13NAZ24-B	CNPV*2414A**	PG8*EA024045	23,400	11.5	14.0
3466405	PA13NAZ24-B	CNPV*2417A**	PG9MXA036060	23,400	11.5	14.0
3466406	PA13NAZ24-B	CNPV*2417A**	PG9MXA036080	23,400	11.5	14.0
3466404	PA13NAZ24-B	CNPV*2417A**+TDR		23,400	11.0	13.0
3466408	PA13NAZ24-B	CNPV*3014A**	PG8*EA024045	23,600	12.0	14.5
3466407	PA13NAZ24-B	CNPV*3014A**+TDR		23,600	11.0	13.0
3466410	PA13NAZ24-B	CNPV*3017A**	PG9MXA036060	23,600	12.0	14.5
3466411	PA13NAZ24-B	CNPV*3017A**	PG9MXA036080	23,600	12.0	14.5
3466409	PA13NAZ24-B	CNPV*3017A**+TDR		23,600	11.0	13.0
3466872	PA13NAZ24-B	CNPV*3117A**	PG9MXA036060	23,800	12.0	14.5
3466873	PA13NAZ24-B	CNPV*3117A**	PG9MXA036080	23,800	12.0	14.5
3466871	PA13NAZ24-B	CNPV*3117A**+TDR		23,800	11.0	13.0
3466430	PA13NAZ24-B	CSPH*2412A**	PG8*EA024045	23,400	11.5	14.0
3466433	PA13NAZ24-B	CSPH*2412A**	PG9MTAV36050*A**	23,400	11.5	14.0
3466434	PA13NAZ24-B	CSPH*2412A**	PG9MTAV36075*A**	23,400	11.5	14.0
3466435	PA13NAZ24-B	CSPH*2412A**	PG9MTAV60100*A**	23,400	11.5	14.0
3466436	PA13NAZ24-B	CSPH*2412A**	PG9MTAV60125*A**	23,400	11.5	14.0
3466431	PA13NAZ24-B	CSPH*2412A**	PG9MXA036060	23,400	11.5	15.0
3466432	PA13NAZ24-B	CSPH*2412A**	PG9MXA036080	23,400	11.5	14.0
3466429	PA13NAZ24-B	CSPH*2412A**+TDR		23,400	11.0	13.0
3466438	PA13NAZ24-B	CSPH*3012A**	PG8*EA024045	23,600	12.0	14.5
3466441	PA13NAZ24-B	CSPH*3012A**	PG9MTAV36050*A**	23,600	12.0	14.5
3466442	PA13NAZ24-B	CSPH*3012A**	PG9MTAV36075*A**	23,600	12.0	14.5
3466443	PA13NAZ24-B	CSPH*3012A**	PG9MTAV60100*A**	23,600	12.0	14.5
3466444	PA13NAZ24-B	CSPH*3012A**	PG9MTAV60125*A**	23,600	12.0	14.5

See notes on page 21

AHRI* COMBINATION RATINGS (CONT.)

ARI Ref. No.	Model Number	Indoor Model	Furnace Model	Capacity	EER @ A**	SEER
3466439	PA13NAZ24-B	CSPH*3012A**	PG9MXA036060	23,600	12.0	14.5
3466440	PA13NAZ24-B	CSPH*3012A**	PG9MXA036080	23,600	12.0	14.5
3466437	PA13NAZ24-B	CSPH*3012A**+TDR		23,600	11.0	13.0
3466449	PA13NAZ24-B	FF1ENP024		23,400	11.0	13.0
3466450	PA13NAZ24-B	FF1ENP025		23,600	11.5	14.0
3466451	PA13NAZ24-B	FF1ENP030		23,400	11.0	13.0
3466452	PA13NAZ24-B	FF1ENP031		23,600	11.5	14.0
3466453	PA13NAZ24-B	FF1ENP037		23,800	11.5	14.0
3466445	PA13NAZ24-B	PF4MNA024		23,200	11.0	13.0
3466447	PA13NAZ24-B	PF4MNA025		23,400	11.5	14.0
3466446	PA13NAZ24-B	PF4MNA030		23,600	11.0	13.0
3466448	PA13NAZ24-B	PF4MNA031		23,800	12.0	14.5
3092093	PA13NAZ30-A	†CNPV*3014A**+TDR		28,800	11.0	13.0
3092094	PA13NAZ30-A	CAP**3014A**+TDR		28,800	11.0	13.0
3092096	PA13NAZ30-A	CAP**3017A**	PG8*EA048070	28,800	11.5	14.0
3095425	PA13NAZ30-A	CAP**3017A**	PG9MXA036060	28,800	11.5	14.0
3095426	PA13NAZ30-A	CAP**3017A**	PG9MXA036080	28,800	11.5	14.0
3095427	PA13NAZ30-A	CAP**3017A**	PG9MXA048080	28,800	11.5	14.0
3092095	PA13NAZ30-A	CAP**3017A**+TDR		28,800	11.0	13.0
3092097	PA13NAZ30-A	CAP**3614A**+TDR		29,000	11.0	13.0
3092099	PA13NAZ30-A	CAP**3617A**	PG8*EA048070	29,000	12.0	14.5
3095428	PA13NAZ30-A	CAP**3617A**	PG9MXA036060	29,000	12.0	14.5
3095429	PA13NAZ30-A	CAP**3617A**	PG9MXA036080	29,000	12.0	14.5
3095430	PA13NAZ30-A	CAP**3617A**	PG9MXA048080	29,000	12.0	14.5
3092098	PA13NAZ30-A	CAP**3617A**+TDR		29,000	11.5	13.0
3092103	PA13NAZ30-A	CAP**3619A**	PG9MTAV36050*A**	28,800	11.5	14.0
3092104	PA13NAZ30-A	CAP**3619A**	PG9MTAV36075*A**	29,000	12.0	14.5
3092102	PA13NAZ30-A	CAP**3619A**+TDR		29,000	11.0	13.0
3092101	PA13NAZ30-A	CAP**3621A**	PG8*EA048090	29,000	12.0	14.5
3092100	PA13NAZ30-A	CAP**3621A**+TDR		29,000	11.0	13.0
3092125	PA13NAZ30-A	CNPF*3618A**+TDR		29,000	11.0	13.0
3092112	PA13NAZ30-A	CNPH*3017A**	PG8*EA048070	28,800	11.5	14.0
3092113	PA13NAZ30-A	CNPH*3017A**	PG8*EA048090	28,800	11.5	14.0
3092114	PA13NAZ30-A	CNPH*3017A**	PG9MTAV36050*A**	28,600	11.5	14.0
3092115	PA13NAZ30-A	CNPH*3017A**	PG9MTAV36075*A**	28,800	11.5	14.0
3092116	PA13NAZ30-A	CNPH*3017A**	PG9MTAV60100*A**	28,800	11.5	14.0
3092117	PA13NAZ30-A	CNPH*3017A**	PG9MTAV60125*A**	28,800	11.5	14.0
3095437	PA13NAZ30-A	CNPH*3017A**	PG9MXA036060	28,800	11.5	14.0
3095438	PA13NAZ30-A	CNPH*3017A**	PG9MXA036080	28,800	11.5	14.0
3095439	PA13NAZ30-A	CNPH*3017A**	PG9MXA048080	28,800	11.5	14.0
3092111	PA13NAZ30-A	CNPH*3017A**+TDR		28,800	11.0	13.0
3092119	PA13NAZ30-A	CNPH*3617A**	PG8*EA048070	28,800	12.0	14.5
3092120	PA13NAZ30-A	CNPH*3617A**	PG8*EA048090	28,800	12.0	14.5
3092121	PA13NAZ30-A	CNPH*3617A**	PG9MTAV36050*A**	28,600	11.5	14.0
3092122	PA13NAZ30-A	CNPH*3617A**	PG9MTAV36075*A**	28,800	11.5	14.0
3092123	PA13NAZ30-A	CNPH*3617A**	PG9MTAV60100*A**	29,000	12.0	14.5
3092124	PA13NAZ30-A	CNPH*3617A**	PG9MTAV60125*A**	29,000	12.0	14.5
3095440	PA13NAZ30-A	CNPH*3617A**	PG9MXA036060	29,000	12.0	14.5
3095441	PA13NAZ30-A	CNPH*3617A**	PG9MXA036080	29,000	12.0	14.5
3095442	PA13NAZ30-A	CNPH*3617A**	PG9MXA048080	29,000	12.0	14.5
3092118	PA13NAZ30-A	CNPH*3617A**+TDR		29,000	11.0	13.0
3092106	PA13NAZ30-A	CNPV*3017A**	PG8*EA048070	28,800	11.5	14.0
3095431	PA13NAZ30-A	CNPV*3017A**	PG9MXA036060	28,800	11.5	14.0
3095432	PA13NAZ30-A	CNPV*3017A**	PG9MXA036080	28,800	11.5	14.0
3095433	PA13NAZ30-A	CNPV*3017A**	PG9MXA048080	28,800	11.5	14.0
3092105	PA13NAZ30-A	CNPV*3017A**+TDR		28,800	11.0	13.0
3092108	PA13NAZ30-A	CNPV*3617A**	PG8*EA048070	28,800	12.0	14.5
3095434	PA13NAZ30-A	CNPV*3617A**	PG9MXA036060	29,000	12.0	14.5
3095435	PA13NAZ30-A	CNPV*3617A**	PG9MXA036080	29,000	12.0	14.5
3095436	PA13NAZ30-A	CNPV*3617A**	PG9MXA048080	29,000	12.0	14.5
3092107	PA13NAZ30-A	CNPV*3617A**+TDR		29,000	11.0	13.0
3092110	PA13NAZ30-A	CNPV*3621A**	PG8*EA048090	28,800	12.0	14.5
3092109	PA13NAZ30-A	CNPV*3621A**+TDR		29,000	11.0	13.0
3092127	PA13NAZ30-A	CSPH*3012A**	PG8*EA048070	28,800	11.5	14.0
3092128	PA13NAZ30-A	CSPH*3012A**	PG8*EA048090	28,800	11.5	14.0
3092129	PA13NAZ30-A	CSPH*3012A**	PG9MTAV36050*A**	28,800	11.5	14.0
3092130	PA13NAZ30-A	CSPH*3012A**	PG9MTAV36075*A**	28,800	11.5	14.0
3092131	PA13NAZ30-A	CSPH*3012A**	PG9MTAV60100*A**	28,800	11.5	14.0
3092132	PA13NAZ30-A	CSPH*3012A**	PG9MTAV60125*A**	28,800	11.5	14.0
3095443	PA13NAZ30-A	CSPH*3012A**	PG9MXA036060	28,800	11.5	14.0
3095444	PA13NAZ30-A	CSPH*3012A**	PG9MXA036080	28,800	11.5	14.0
3095445	PA13NAZ30-A	CSPH*3012A**	PG9MXA048080	28,800	11.5	14.0
3092126	PA13NAZ30-A	CSPH*3012A**+TDR		28,800	11.0	13.0
3092134	PA13NAZ30-A	CSPH*3612A**	PG8*EA048070	29,000	12.0	14.5
3092135	PA13NAZ30-A	CSPH*3612A**	PG8*EA048090	29,000	12.0	14.5
3092136	PA13NAZ30-A	CSPH*3612A**	PG9MTAV36050*A**	29,000	12.0	14.5
3092137	PA13NAZ30-A	CSPH*3612A**	PG9MTAV36075*A**	29,000	12.0	14.5
3092138	PA13NAZ30-A	CSPH*3612A**	PG9MTAV60100*A**	29,000	12.0	14.5

PA13NAZ

See notes on page 21

AHRI* COMBINATION RATINGS (CONT.)

PA13NAZ

ARI Ref. No.	Model Number	Indoor Model	Furnace Model	Capacity	EER @ A**	SEER
3092139	PA13NAZ30-A	CSPH*3612A**	PG9MTAV60125*A**	29,000	12.0	14.5
3095446	PA13NAZ30-A	CSPH*3612A**	PG9MXA036060	29,000	12.0	14.5
3095447	PA13NAZ30-A	CSPH*3612A**	PG9MXA036080	29,000	12.0	14.5
3095448	PA13NAZ30-A	CSPH*3612A**	PG9MXA048080	29,000	12.0	14.5
3092133	PA13NAZ30-A	CSPH*3612A**+TDR		28,600	11.0	13.0
3092144	PA13NAZ30-A	FF1ENP030		28,400	11.0	13.0
3092145	PA13NAZ30-A	FF1ENP036		29,000	11.0	13.0
3092140	PA13NAZ30-A	PF4MNA030		28,600	11.0	13.0
3092142	PA13NAZ30-A	PF4MNA031		28,800	12.0	14.5
3092141	PA13NAZ30-A	PF4MNA036		29,000	11.0	13.0
3092143	PA13NAZ30-A	PF4MNA037		29,000	12.0	14.5
3092146	PA13NAZ36-A	†CNPV*4221A**+TDR		34,000	11.0	13.0
3092148	PA13NAZ36-A	CAP**3614A**	PG8*EA024045	33,200	11.0	13.5
3092147	PA13NAZ36-A	CAP**3614A**+TDR		33,200	11.0	13.0
3092150	PA13NAZ36-A	CAP**3617A**	PG8*EA048070	33,400	11.5	14.0
3095449	PA13NAZ36-A	CAP**3617A**	PG9MXA036060	33,400	11.5	14.0
3095450	PA13NAZ36-A	CAP**3617A**	PG9MXA036080	33,400	11.5	14.0
3095451	PA13NAZ36-A	CAP**3617A**	PG9MXA048080	33,400	11.5	14.0
3092149	PA13NAZ36-A	CAP**3617A**+TDR		33,400	11.0	13.0
3092160	PA13NAZ36-A	CAP**3619A**	PG9MTAV36050*A**	33,200	11.0	13.5
3092161	PA13NAZ36-A	CAP**3619A**	PG9MTAV36075*A**	33,400	11.5	14.0
3092159	PA13NAZ36-A	CAP**3619A**+TDR		33,400	11.0	13.0
3092152	PA13NAZ36-A	CAP**3621A**	PG8*EA048090	33,400	11.5	14.0
3092153	PA13NAZ36-A	CAP**3621A**	PG8*EA060110	33,400	11.5	14.0
3095452	PA13NAZ36-A	CAP**3621A**	PG9MXA060100	33,400	11.5	14.0
3092151	PA13NAZ36-A	CAP**3621A**+TDR		33,400	11.0	13.0
3092155	PA13NAZ36-A	CAP**4221A**	PG8*EA048090	34,000	12.0	14.5
3092156	PA13NAZ36-A	CAP**4221A**	PG8*EA060110	34,000	12.0	14.5
3095453	PA13NAZ36-A	CAP**4221A**	PG9MXA060100	33,800	12.0	14.5
3092154	PA13NAZ36-A	CAP**4221A**+TDR		33,800	11.0	13.0
3092158	PA13NAZ36-A	CAP**4224A**	PG9MTAV60125*A**	34,000	12.0	14.5
3092157	PA13NAZ36-A	CAP**4224A**+TDR		33,800	11.0	13.0
3092186	PA13NAZ36-A	CNPF*3618A**+TDR		33,400	11.0	13.0
3092170	PA13NAZ36-A	CNPH*3617A**	PG8*EA024045	33,200	11.0	13.5
3092171	PA13NAZ36-A	CNPH*3617A**	PG8*EA048070	33,200	11.5	14.0
3092172	PA13NAZ36-A	CNPH*3617A**	PG8*EA048090	33,400	11.5	14.0
3092173	PA13NAZ36-A	CNPH*3617A**	PG8*EA060110	33,400	11.5	14.0
3092174	PA13NAZ36-A	CNPH*3617A**	PG9MTAV36050*A**	33,000	11.0	13.5
3092175	PA13NAZ36-A	CNPH*3617A**	PG9MTAV36075*A**	33,200	11.5	14.0
3092176	PA13NAZ36-A	CNPH*3617A**	PG9MTAV60100*A**	33,400	11.5	14.0
3092177	PA13NAZ36-A	CNPH*3617A**	PG9MTAV60125*A**	33,400	11.5	14.0
3095459	PA13NAZ36-A	CNPH*3617A**	PG9MXA036060	33,400	11.5	14.0
3095460	PA13NAZ36-A	CNPH*3617A**	PG9MXA036080	33,400	11.5	14.0
3095461	PA13NAZ36-A	CNPH*3617A**	PG9MXA048080	33,400	11.5	14.0
3095462	PA13NAZ36-A	CNPH*3617A**	PG9MXA060100	33,200	11.5	14.0
3092169	PA13NAZ36-A	CNPH*3617A**+TDR		33,400	11.0	13.0
3092179	PA13NAZ36-A	CNPH*4221A**	PG8*EA024045	33,600	11.5	14.0
3092180	PA13NAZ36-A	CNPH*4221A**	PG8*EA048070	33,600	12.0	14.5
3092181	PA13NAZ36-A	CNPH*4221A**	PG8*EA048090	33,800	12.0	14.5
3092182	PA13NAZ36-A	CNPH*4221A**	PG8*EA060110	34,000	12.0	14.5
3092183	PA13NAZ36-A	CNPH*4221A**	PG9MTAV36050*A**	33,600	11.5	14.0
3092184	PA13NAZ36-A	CNPH*4221A**	PG9MTAV36075*A**	33,600	11.5	14.0
3092185	PA13NAZ36-A	CNPH*4221A**	PG9MTAV60100*A**	34,000	12.0	14.5
3095463	PA13NAZ36-A	CNPH*4221A**	PG9MXA036060	34,000	12.0	14.5
3095464	PA13NAZ36-A	CNPH*4221A**	PG9MXA036080	33,800	12.0	14.5
3095465	PA13NAZ36-A	CNPH*4221A**	PG9MXA048080	34,000	12.0	14.5
3095466	PA13NAZ36-A	CNPH*4221A**	PG9MXA060100	33,800	12.0	14.5
3092178	PA13NAZ36-A	CNPH*4221A**+TDR		34,000	11.0	13.0
3092163	PA13NAZ36-A	CNPV*3617A**	PG8*EA048070	33,200	11.5	14.0
3095454	PA13NAZ36-A	CNPV*3617A**	PG9MXA036060	33,400	11.5	14.0
3095455	PA13NAZ36-A	CNPV*3617A**	PG9MXA036080	33,400	11.5	14.0
3095456	PA13NAZ36-A	CNPV*3617A**	PG9MXA048080	33,400	11.5	14.0
3092162	PA13NAZ36-A	CNPV*3617A**+TDR		33,400	11.0	13.0
3092165	PA13NAZ36-A	CNPV*3621A**	PG8*EA048090	33,400	11.5	14.0
3092166	PA13NAZ36-A	CNPV*3621A**	PG8*EA060110	33,400	11.5	14.0
3095457	PA13NAZ36-A	CNPV*3621A**	PG9MXA060100	33,400	11.5	14.0
3092164	PA13NAZ36-A	CNPV*3621A**+TDR		33,400	11.0	13.0
3095632	PA13NAZ36-A	CNPV*4217A**	PG8*EA048070	33,800	12.0	14.5
3095633	PA13NAZ36-A	CNPV*4217A**	PG9MXA036060	34,000	12.0	14.5
3095634	PA13NAZ36-A	CNPV*4217A**	PG9MXA036080	34,000	12.0	14.5
3095635	PA13NAZ36-A	CNPV*4217A**	PG9MXA048080	34,000	12.0	14.5
3095631	PA13NAZ36-A	CNPV*4217A**+TDR		34,000	11.0	13.0
3092167	PA13NAZ36-A	CNPV*4221A**	PG8*EA048090	33,800	12.0	14.5
3092168	PA13NAZ36-A	CNPV*4221A**	PG8*EA060110	34,000	12.0	14.5
3095458	PA13NAZ36-A	CNPV*4221A**	PG9MXA060100	33,800	12.0	14.5
3092188	PA13NAZ36-A	CSPH*3612A**	PG8*EA024045	33,400	11.5	14.0
3092189	PA13NAZ36-A	CSPH*3612A**	PG8*EA048070	33,400	11.5	14.0
3092190	PA13NAZ36-A	CSPH*3612A**	PG8*EA048090	33,400	11.5	14.0

See notes on page 21

AHRI* COMBINATION RATINGS (CONT.)

ARI Ref. No.	Model Number	Indoor Model	Furnace Model	Capacity	EER @ A**	SEER
3092191	PA13NAZ36-A	CSPH*3612A**	PG8*EA060110	33,400	11.5	14.0
3092192	PA13NAZ36-A	CSPH*3612A**	PG9MTAV36050*A**	33,400	11.5	14.0
3092193	PA13NAZ36-A	CSPH*3612A**	PG9MTAV36075*A**	33,400	11.5	14.0
3092194	PA13NAZ36-A	CSPH*3612A**	PG9MTAV60100*A**	33,400	11.5	14.0
3092195	PA13NAZ36-A	CSPH*3612A**	PG9MTAV60125*A**	33,400	11.5	14.0
3095467	PA13NAZ36-A	CSPH*3612A**	PG9MXA036060	33,400	11.5	14.0
3095468	PA13NAZ36-A	CSPH*3612A**	PG9MXA036080	33,400	11.5	14.0
3095469	PA13NAZ36-A	CSPH*3612A**	PG9MXA048080	33,400	11.5	14.0
3095470	PA13NAZ36-A	CSPH*3612A**	PG9MXA060100	33,400	11.5	14.0
3092187	PA13NAZ36-A	CSPH*3612A**+TDR		33,400	11.0	13.0
3092197	PA13NAZ36-A	CSPH*4212A**	PG8*EA024045	34,000	11.5	14.0
3092198	PA13NAZ36-A	CSPH*4212A**	PG8*EA048070	34,000	12.0	14.5
3092199	PA13NAZ36-A	CSPH*4212A**	PG8*EA048090	34,000	12.0	14.5
3092200	PA13NAZ36-A	CSPH*4212A**	PG8*EA060110	34,000	12.0	14.5
3092201	PA13NAZ36-A	CSPH*4212A**	PG9MTAV36050*A**	34,000	11.5	14.0
3092202	PA13NAZ36-A	CSPH*4212A**	PG9MTAV36075*A**	34,000	11.5	14.5
3092203	PA13NAZ36-A	CSPH*4212A**	PG9MTAV60100*A**	34,000	12.0	14.5
3092204	PA13NAZ36-A	CSPH*4212A**	PG9MTAV60125*A**	34,000	12.0	14.5
3095471	PA13NAZ36-A	CSPH*4212A**	PG9MXA036060	34,000	12.0	14.5
3095472	PA13NAZ36-A	CSPH*4212A**	PG9MXA036080	34,000	12.0	14.5
3095473	PA13NAZ36-A	CSPH*4212A**	PG9MXA048080	34,000	12.0	14.5
3095474	PA13NAZ36-A	CSPH*4212A**	PG9MXA060100	34,000	11.5	14.0
3092196	PA13NAZ36-A	CSPH*4212A**+TDR		34,000	11.0	13.0
3092209	PA13NAZ36-A	FF1ENP036		33,400	11.0	13.0
3092205	PA13NAZ36-A	PF4MNA036		33,600	11.0	13.0
3092207	PA13NAZ36-A	PF4MNA037		33,400	12.0	14.5
3092206	PA13NAZ36-A	PF4MNA042		34,200	11.0	13.0
3092208	PA13NAZ36-A	PF4MNA043		34,000	12.0	14.5
3092210	PA13PAZ36-A	†CNPV*4221A**+TDR		34,000	11.0	13.0
3092212	PA13PAZ36-A	CAP**3614A**	PG8*EA024045	33,200	11.0	13.5
3092211	PA13PAZ36-A	CAP**3614A**+TDR		33,200	11.0	13.0
3092214	PA13PAZ36-A	CAP**3617A**	PG8*EA048070	33,400	11.5	14.0
3095710	PA13PAZ36-A	CAP**3617A**	PG9MXA036060	33,400	11.5	14.0
3095711	PA13PAZ36-A	CAP**3617A**	PG9MXA036080	33,400	11.5	14.0
3095712	PA13PAZ36-A	CAP**3617A**	PG9MXA048080	33,400	11.5	14.0
3092213	PA13PAZ36-A	CAP**3617A**+TDR		33,400	11.0	13.0
3092224	PA13PAZ36-A	CAP**3619A**	PG9MTAV36050*A**	33,200	11.0	13.5
3092225	PA13PAZ36-A	CAP**3619A**	PG9MTAV36075*A**	33,400	11.5	14.0
3092223	PA13PAZ36-A	CAP**3619A**+TDR		33,400	11.0	13.0
3092216	PA13PAZ36-A	CAP**3621A**	PG8*EA048090	33,400	11.5	14.0
3092217	PA13PAZ36-A	CAP**3621A**	PG8*EA060110	33,400	11.5	14.0
3095713	PA13PAZ36-A	CAP**3621A**	PG9MXA060100	33,400	11.5	14.0
3092215	PA13PAZ36-A	CAP**3621A**+TDR		33,400	11.0	13.0
3092219	PA13PAZ36-A	CAP**4221A**	PG8*EA048090	34,000	12.0	14.5
3092220	PA13PAZ36-A	CAP**4221A**	PG8*EA060110	34,000	12.0	14.5
3095714	PA13PAZ36-A	CAP**4221A**	PG9MXA060100	33,800	12.0	14.5
3092218	PA13PAZ36-A	CAP**4221A**+TDR		33,800	11.0	13.0
3092222	PA13PAZ36-A	CAP**4224A**	PG9MTAV60125*A**	34,000	12.0	14.5
3092221	PA13PAZ36-A	CAP**4224A**+TDR		33,800	11.0	13.0
3092250	PA13PAZ36-A	CNPF*3618A**+TDR		33,400	11.0	13.0
3092234	PA13PAZ36-A	CNPH*3617A**	PG8*EA024045	33,200	11.0	13.5
3092235	PA13PAZ36-A	CNPH*3617A**	PG8*EA048070	33,200	11.5	14.0
3092236	PA13PAZ36-A	CNPH*3617A**	PG8*EA048090	33,400	11.5	14.0
3092237	PA13PAZ36-A	CNPH*3617A**	PG8*EA060110	33,400	11.5	14.0
3092238	PA13PAZ36-A	CNPH*3617A**	PG9MTAV36050*A**	33,000	11.0	13.5
3092239	PA13PAZ36-A	CNPH*3617A**	PG9MTAV36075*A**	33,200	11.5	14.0
3092240	PA13PAZ36-A	CNPH*3617A**	PG9MTAV60100*A**	33,400	11.5	14.0
3092241	PA13PAZ36-A	CNPH*3617A**	PG9MTAV60125*A**	33,400	11.5	14.0
3095725	PA13PAZ36-A	CNPH*3617A**	PG9MXA036060	33,400	11.5	14.0
3095726	PA13PAZ36-A	CNPH*3617A**	PG9MXA036080	33,400	11.5	14.0
3095727	PA13PAZ36-A	CNPH*3617A**	PG9MXA048080	33,400	11.5	14.0
3095728	PA13PAZ36-A	CNPH*3617A**	PG9MXA060100	33,200	11.5	14.0
3092233	PA13PAZ36-A	CNPH*3617A**+TDR		33,400	11.0	13.0
3092243	PA13PAZ36-A	CNPH*4221A**	PG8*EA024045	33,600	11.5	14.0
3092244	PA13PAZ36-A	CNPH*4221A**	PG8*EA048070	33,600	12.0	14.5
3092245	PA13PAZ36-A	CNPH*4221A**	PG8*EA048090	33,800	12.0	14.5
3092246	PA13PAZ36-A	CNPH*4221A**	PG8*EA060110	34,000	12.0	14.5
3092247	PA13PAZ36-A	CNPH*4221A**	PG9MTAV36050*A**	33,600	11.5	14.0
3092248	PA13PAZ36-A	CNPH*4221A**	PG9MTAV36075*A**	33,600	11.5	14.0
3092249	PA13PAZ36-A	CNPH*4221A**	PG9MTAV60100*A**	34,000	12.0	14.5
3095729	PA13PAZ36-A	CNPH*4221A**	PG9MXA036060	34,000	12.0	14.5
3095730	PA13PAZ36-A	CNPH*4221A**	PG9MXA036080	33,800	12.0	14.5
3095731	PA13PAZ36-A	CNPH*4221A**	PG9MXA048080	34,000	12.0	14.5
3095732	PA13PAZ36-A	CNPH*4221A**	PG9MXA060100	33,800	12.0	14.5
3092242	PA13PAZ36-A	CNPH*4221A**+TDR		34,000	11.0	13.0
3092227	PA13PAZ36-A	CNPV*3617A**	PG8*EA048070	33,200	11.5	14.0
3095715	PA13PAZ36-A	CNPV*3617A**	PG9MXA036060	33,400	11.5	14.0
3095716	PA13PAZ36-A	CNPV*3617A**	PG9MXA036080	33,400	11.5	14.0

PA13NAZ

See notes on page 21

AHRI* COMBINATION RATINGS (CONT.)

PA13NAZ

ARI Ref. No.	Model Number	Indoor Model	Furnace Model	Capacity	EER @ A**	SEER
3095717	PA13PAZ36-A	CNPV*3617A**	PG9MXA048080	33,400	11.5	14.0
3092226	PA13PAZ36-A	CNPV*3617A**+TDR		33,400	11.0	13.0
3092229	PA13PAZ36-A	CNPV*3621A**	PG8*EA048090	33,400	11.5	14.0
3092230	PA13PAZ36-A	CNPV*3621A**	PG8*EA060110	33,400	11.5	14.0
3095718	PA13PAZ36-A	CNPV*3621A**	PG9MXA060100	33,400	11.5	14.0
3092228	PA13PAZ36-A	CNPV*3621A**+TDR		33,400	11.0	13.0
3095720	PA13PAZ36-A	CNPV*4217A**	PG8*EA048070	33,800	12.0	14.5
3095721	PA13PAZ36-A	CNPV*4217A**	PG9MXA036060	34,000	12.0	14.5
3095722	PA13PAZ36-A	CNPV*4217A**	PG9MXA036080	34,000	12.0	14.5
3095723	PA13PAZ36-A	CNPV*4217A**	PG9MXA048080	34,000	12.0	14.5
3095719	PA13PAZ36-A	CNPV*4217A**+TDR		34,000	11.0	13.0
3092231	PA13PAZ36-A	CNPV*4221A**	PG8*EA048090	33,800	12.0	14.5
3092232	PA13PAZ36-A	CNPV*4221A**	PG8*EA060110	34,000	12.0	14.5
3095724	PA13PAZ36-A	CNPV*4221A**	PG9MXA060100	33,800	12.0	14.5
3092252	PA13PAZ36-A	CSPH*3612A**	PG8*EA024045	33,400	11.5	14.0
3092253	PA13PAZ36-A	CSPH*3612A**	PG8*EA048070	33,400	11.5	14.0
3092254	PA13PAZ36-A	CSPH*3612A**	PG8*EA048090	33,400	11.5	14.0
3092255	PA13PAZ36-A	CSPH*3612A**	PG8*EA060110	33,400	11.5	14.0
3092256	PA13PAZ36-A	CSPH*3612A**	PG9MTAV36050*A**	33,400	11.5	14.0
3092257	PA13PAZ36-A	CSPH*3612A**	PG9MTAV36075*A**	33,400	11.5	14.0
3092258	PA13PAZ36-A	CSPH*3612A**	PG9MTAV60100*A**	33,400	11.5	14.0
3092259	PA13PAZ36-A	CSPH*3612A**	PG9MTAV60125*A**	33,400	11.5	14.0
3095733	PA13PAZ36-A	CSPH*3612A**	PG9MXA036060	33,400	11.5	14.0
3095734	PA13PAZ36-A	CSPH*3612A**	PG9MXA036080	33,400	11.5	14.0
3095735	PA13PAZ36-A	CSPH*3612A**	PG9MXA048080	33,400	11.5	14.0
3095736	PA13PAZ36-A	CSPH*3612A**	PG9MXA060100	33,400	11.5	14.0
3092251	PA13PAZ36-A	CSPH*3612A**+TDR		33,400	11.0	13.0
3092261	PA13PAZ36-A	CSPH*4212A**	PG8*EA024045	34,000	11.5	14.0
3092262	PA13PAZ36-A	CSPH*4212A**	PG8*EA048070	34,000	12.0	14.5
3092263	PA13PAZ36-A	CSPH*4212A**	PG8*EA048090	34,000	12.0	14.5
3092264	PA13PAZ36-A	CSPH*4212A**	PG8*EA060110	34,000	12.0	14.5
3092265	PA13PAZ36-A	CSPH*4212A**	PG9MTAV36050*A**	34,000	11.5	14.0
3092266	PA13PAZ36-A	CSPH*4212A**	PG9MTAV36075*A**	34,000	11.5	14.5
3092267	PA13PAZ36-A	CSPH*4212A**	PG9MTAV60100*A**	34,000	12.0	14.5
3092268	PA13PAZ36-A	CSPH*4212A**	PG9MTAV60125*A**	34,000	12.0	14.5
3095737	PA13PAZ36-A	CSPH*4212A**	PG9MXA036060	34,000	12.0	14.5
3095738	PA13PAZ36-A	CSPH*4212A**	PG9MXA036080	34,000	12.0	14.5
3095739	PA13PAZ36-A	CSPH*4212A**	PG9MXA048080	34,000	12.0	14.5
3095740	PA13PAZ36-A	CSPH*4212A**	PG9MXA060100	34,000	11.5	14.0
3092260	PA13PAZ36-A	CSPH*4212A**+TDR		34,000	11.0	13.0
3092273	PA13PAZ36-A	FF1ENP036		33,400	11.0	13.0
3092269	PA13PAZ36-A	PF4MNA036		33,600	11.0	13.0
3092271	PA13PAZ36-A	PF4MNA037		33,400	12.0	14.5
3092270	PA13PAZ36-A	PF4MNA042		34,200	11.0	13.0
3092272	PA13PAZ36-A	PF4MNA043		34,000	12.0	14.5
3092274	PA13EAZ36-A	†CNPV*4221A**+TDR		34,000	11.0	13.0
3092276	PA13EAZ36-A	CAP**3614A**	PG8*EA024045	33,200	11.0	13.5
3092275	PA13EAZ36-A	CAP**3614A**+TDR		33,200	11.0	13.0
3092278	PA13EAZ36-A	CAP**3617A**	PG8*EA048070	33,400	11.5	14.0
3095647	PA13EAZ36-A	CAP**3617A**	PG9MXA036060	33,400	11.5	14.0
3095648	PA13EAZ36-A	CAP**3617A**	PG9MXA036080	33,400	11.5	14.0
3095649	PA13EAZ36-A	CAP**3617A**	PG9MXA048080	33,400	11.5	14.0
3092277	PA13EAZ36-A	CAP**3617A**+TDR		33,400	11.0	13.0
3092288	PA13EAZ36-A	CAP**3619A**	PG9MTAV36050*A**	33,200	11.0	13.5
3092289	PA13EAZ36-A	CAP**3619A**	PG9MTAV36075*A**	33,400	11.5	14.0
3092287	PA13EAZ36-A	CAP**3619A**+TDR		33,400	11.0	13.0
3092280	PA13EAZ36-A	CAP**3621A**	PG8*EA048090	33,400	11.5	14.0
3092281	PA13EAZ36-A	CAP**3621A**	PG8*EA060110	33,400	11.5	14.0
3095650	PA13EAZ36-A	CAP**3621A**	PG9MXA060100	33,400	11.5	14.0
3092279	PA13EAZ36-A	CAP**3621A**+TDR		33,400	11.0	13.0
3092283	PA13EAZ36-A	CAP**4221A**	PG8*EA048090	34,000	12.0	14.5
3092284	PA13EAZ36-A	CAP**4221A**	PG8*EA060110	34,000	12.0	14.5
3095651	PA13EAZ36-A	CAP**4221A**	PG9MXA060100	33,800	12.0	14.5
3092282	PA13EAZ36-A	CAP**4221A**+TDR		33,800	11.0	13.0
3092286	PA13EAZ36-A	CAP**4224A**	PG9MTAV60125*A**	34,000	12.0	14.5
3092285	PA13EAZ36-A	CAP**4224A**+TDR		33,800	11.0	13.0
3092314	PA13EAZ36-A	CNPF*3618A**+TDR		33,400	11.0	13.0
3092298	PA13EAZ36-A	CNPH*3617A**	PG8*EA024045	33,200	11.0	13.5
3092299	PA13EAZ36-A	CNPH*3617A**	PG8*EA048070	33,200	11.5	14.0
3092300	PA13EAZ36-A	CNPH*3617A**	PG8*EA048090	33,400	11.5	14.0
3092301	PA13EAZ36-A	CNPH*3617A**	PG8*EA060110	33,400	11.5	14.0
3092302	PA13EAZ36-A	CNPH*3617A**	PG9MTAV36050*A**	33,000	11.0	13.5
3092303	PA13EAZ36-A	CNPH*3617A**	PG9MTAV36075*A**	33,200	11.5	14.0
3092304	PA13EAZ36-A	CNPH*3617A**	PG9MTAV60100*A**	33,400	11.5	14.0
3092305	PA13EAZ36-A	CNPH*3617A**	PG9MTAV60125*A**	33,400	11.5	14.0
3095662	PA13EAZ36-A	CNPH*3617A**	PG9MXA036060	33,400	11.5	14.0
3095663	PA13EAZ36-A	CNPH*3617A**	PG9MXA036080	33,400	11.5	14.0
3095664	PA13EAZ36-A	CNPH*3617A**	PG9MXA048080	33,400	11.5	14.0

See notes on page 21

AHRI* COMBINATION RATINGS (CONT.)

ARI Ref. No.	Model Number	Indoor Model	Furnace Model	Capacity	EER @ A**	SEER
3095665	PA13EAZ36-A	CNPH*3617A**	PG9MXA060100	33,200	11.5	14.0
3092297	PA13EAZ36-A	CNPH*3617A**+TDR		33,400	11.0	13.0
3092307	PA13EAZ36-A	CNPH*4221A**	PG8*EA024045	33,600	11.5	14.0
3092308	PA13EAZ36-A	CNPH*4221A**	PG8*EA048070	33,600	12.0	14.5
3092309	PA13EAZ36-A	CNPH*4221A**	PG8*EA048090	33,800	12.0	14.5
3092310	PA13EAZ36-A	CNPH*4221A**	PG8*EA060110	34,000	12.0	14.5
3092311	PA13EAZ36-A	CNPH*4221A**	PG9MTAV36050*A**	33,600	11.5	14.0
3092312	PA13EAZ36-A	CNPH*4221A**	PG9MTAV36075*A**	33,600	11.5	14.0
3092313	PA13EAZ36-A	CNPH*4221A**	PG9MTAV60100*A**	34,000	12.0	14.5
3095666	PA13EAZ36-A	CNPH*4221A**	PG9MXA036060	34,000	12.0	14.5
3095667	PA13EAZ36-A	CNPH*4221A**	PG9MXA036080	33,800	12.0	14.5
3095668	PA13EAZ36-A	CNPH*4221A**	PG9MXA048080	34,000	12.0	14.5
3095669	PA13EAZ36-A	CNPH*4221A**	PG9MXA060100	33,800	12.0	14.5
3092306	PA13EAZ36-A	CNPH*4221A**+TDR		34,000	11.0	13.0
3092291	PA13EAZ36-A	CNPV*3617A**	PG8*EA048070	33,200	11.5	14.0
3095652	PA13EAZ36-A	CNPV*3617A**	PG9MXA036060	33,400	11.5	14.0
3095653	PA13EAZ36-A	CNPV*3617A**	PG9MXA036080	33,400	11.5	14.0
3095654	PA13EAZ36-A	CNPV*3617A**	PG9MXA048080	33,400	11.5	14.0
3092290	PA13EAZ36-A	CNPV*3617A**+TDR		33,400	11.0	13.0
3092293	PA13EAZ36-A	CNPV*3621A**	PG8*EA048090	33,400	11.5	14.0
3092294	PA13EAZ36-A	CNPV*3621A**	PG8*EA060110	33,400	11.5	14.0
3095655	PA13EAZ36-A	CNPV*3621A**	PG9MXA060100	33,400	11.5	14.0
3092292	PA13EAZ36-A	CNPV*3621A**+TDR		33,400	11.0	13.0
3095657	PA13EAZ36-A	CNPV*4217A**	PG8*EA048070	33,800	12.0	14.5
3095658	PA13EAZ36-A	CNPV*4217A**	PG9MXA036060	34,000	12.0	14.5
3095659	PA13EAZ36-A	CNPV*4217A**	PG9MXA036080	34,000	12.0	14.5
3095660	PA13EAZ36-A	CNPV*4217A**	PG9MXA048080	34,000	12.0	14.5
3095656	PA13EAZ36-A	CNPV*4217A**+TDR		34,000	11.0	13.0
3092295	PA13EAZ36-A	CNPV*4221A**	PG8*EA048090	33,800	12.0	14.5
3092296	PA13EAZ36-A	CNPV*4221A**	PG8*EA060110	34,000	12.0	14.5
3095661	PA13EAZ36-A	CNPV*4221A**	PG9MXA060100	33,800	12.0	14.5
3092316	PA13EAZ36-A	CSPH*3612A**	PG8*EA024045	33,400	11.5	14.0
3092317	PA13EAZ36-A	CSPH*3612A**	PG8*EA048070	33,400	11.5	14.0
3092318	PA13EAZ36-A	CSPH*3612A**	PG8*EA048090	33,400	11.5	14.0
3092319	PA13EAZ36-A	CSPH*3612A**	PG8*EA060110	33,400	11.5	14.0
3092320	PA13EAZ36-A	CSPH*3612A**	PG9MTAV36050*A**	33,400	11.5	14.0
3092321	PA13EAZ36-A	CSPH*3612A**	PG9MTAV36075*A**	33,400	11.5	14.0
3092322	PA13EAZ36-A	CSPH*3612A**	PG9MTAV60100*A**	33,400	11.5	14.0
3092323	PA13EAZ36-A	CSPH*3612A**	PG9MTAV60125*A**	33,400	11.5	14.0
3095670	PA13EAZ36-A	CSPH*3612A**	PG9MXA036060	33,400	11.5	14.0
3095671	PA13EAZ36-A	CSPH*3612A**	PG9MXA036080	33,400	11.5	14.0
3095672	PA13EAZ36-A	CSPH*3612A**	PG9MXA048080	33,400	11.5	14.0
3095673	PA13EAZ36-A	CSPH*3612A**	PG9MXA060100	33,400	11.5	14.0
3092315	PA13EAZ36-A	CSPH*3612A**+TDR		33,400	11.0	13.0
3092325	PA13EAZ36-A	CSPH*4212A**	PG8*EA024045	34,000	11.5	14.0
3092326	PA13EAZ36-A	CSPH*4212A**	PG8*EA048070	34,000	12.0	14.5
3092327	PA13EAZ36-A	CSPH*4212A**	PG8*EA048090	34,000	12.0	14.5
3092328	PA13EAZ36-A	CSPH*4212A**	PG8*EA060110	34,000	12.0	14.5
3092329	PA13EAZ36-A	CSPH*4212A**	PG9MTAV36050*A**	34,000	11.5	14.0
3092330	PA13EAZ36-A	CSPH*4212A**	PG9MTAV36075*A**	34,000	11.5	14.5
3092331	PA13EAZ36-A	CSPH*4212A**	PG9MTAV60100*A**	34,000	12.0	14.5
3092332	PA13EAZ36-A	CSPH*4212A**	PG9MTAV60125*A**	34,000	12.0	14.5
3095674	PA13EAZ36-A	CSPH*4212A**	PG9MXA036060	34,000	12.0	14.5
3095675	PA13EAZ36-A	CSPH*4212A**	PG9MXA036080	34,000	12.0	14.5
3095676	PA13EAZ36-A	CSPH*4212A**	PG9MXA048080	34,000	12.0	14.5
3095677	PA13EAZ36-A	CSPH*4212A**	PG9MXA060100	34,000	11.5	14.0
3092324	PA13EAZ36-A	CSPH*4212A**+TDR		34,000	11.0	13.0
3092337	PA13EAZ36-A	FF1ENP036		33,400	11.0	13.0
3092333	PA13EAZ36-A	PF4MNA036		33,600	11.0	13.0
3092335	PA13EAZ36-A	PF4MNA037		33,400	12.0	14.5
3092334	PA13EAZ36-A	PF4MNA042		34,200	11.0	13.0
3092336	PA13EAZ36-A	PF4MNA043		34,000	12.0	14.5
3466454	PA13NAZ48-B	†CNPV*4821A**+TDR		47,000	11.0	13.0
3466456	PA13NAZ48-B	CAP**4817A**	PG8*EA048070	46,500	11.0	13.0
3466457	PA13NAZ48-B	CAP**4817A**	PG9MXA048080	46,500	11.5	14.0
3466455	PA13NAZ48-B	CAP**4817A**+TDR		46,500	11.0	13.0
3466459	PA13NAZ48-B	CAP**4821A**	PG8*EA048090	46,500	11.5	14.0
3466460	PA13NAZ48-B	CAP**4821A**	PG8*EA060110	46,500	11.5	14.0
3466461	PA13NAZ48-B	CAP**4821A**	PG9MXA060100	46,500	11.5	14.0
3466458	PA13NAZ48-B	CAP**4821A**+TDR		47,000	11.0	13.0
3466475	PA13NAZ48-B	CAP**4823A**	PG8*EA048090	46,500	11.5	14.0
3466476	PA13NAZ48-B	CAP**4823A**	PG8*EA060110	46,500	11.5	14.0
3466478	PA13NAZ48-B	CAP**4823A**	PG9MTAV60100*A**	46,500	11.0	13.5
3466477	PA13NAZ48-B	CAP**4823A**	PG9MXA060100	46,500	11.5	14.0
3466474	PA13NAZ48-B	CAP**4823A**+TDR		47,000	11.0	13.0
3466463	PA13NAZ48-B	CAP**4824A**	PG8*EA060135	46,500	11.5	14.0
3466465	PA13NAZ48-B	CAP**4824A**	PG9MTAV60125*A**	46,500	11.5	14.0
3466464	PA13NAZ48-B	CAP**4824A**	PG9MXA060120	46,500	11.5	14.0

PA13NAZ

See notes on page 21

AHRI* COMBINATION RATINGS (CONT.)

PA13NAZ

ARI Ref. No.	Model Number	Indoor Model	Furnace Model	Capacity	EER @ A**	SEER
3466462	PA13NAZ48-B	CAP**4824A**+TDR		47,000	11.0	13.0
3466467	PA13NAZ48-B	CAP**6021A**	PG8*EA048090	47,000	12.0	14.5
3466468	PA13NAZ48-B	CAP**6021A**	PG8*EA060110	47,000	12.0	14.5
3466469	PA13NAZ48-B	CAP**6021A**	PG9MXA060100	47,000	12.0	14.5
3466466	PA13NAZ48-B	CAP**6021A**+TDR		47,500	11.0	13.0
3466471	PA13NAZ48-B	CAP**6024A**	PG8*EA060135	47,000	12.0	14.5
3466473	PA13NAZ48-B	CAP**6024A**	PG9MTAV60125*A**	47,000	12.0	14.5
3466472	PA13NAZ48-B	CAP**6024A**	PG9MXA060120	47,000	12.0	14.5
3466470	PA13NAZ48-B	CAP**6024A**+TDR		47,500	11.0	13.0
3466480	PA13NAZ48-B	CAP**6025A**	PG8*EA060135	47,000	12.0	14.5
3466482	PA13NAZ48-B	CAP**6025A**	PG9MTAV60125*A**	47,000	12.0	14.5
3466481	PA13NAZ48-B	CAP**6025A**	PG9MXA060120	47,000	12.0	14.5
3466479	PA13NAZ48-B	CAP**6025A**+TDR		47,500	11.0	13.0
3466528	PA13NAZ48-B	CNPF*4818A**+TDR		46,000	11.0	13.0
3466499	PA13NAZ48-B	CNPH*4821A**	PG8*EA048070	46,500	11.0	13.0
3466500	PA13NAZ48-B	CNPH*4821A**	PG8*EA048090	46,500	11.5	14.0
3466501	PA13NAZ48-B	CNPH*4821A**	PG8*EA060110	46,500	11.5	14.0
3466502	PA13NAZ48-B	CNPH*4821A**	PG8*EA060135	46,500	11.5	14.0
3466506	PA13NAZ48-B	CNPH*4821A**	PG9MTAV60100*A**	46,500	11.5	14.0
3466507	PA13NAZ48-B	CNPH*4821A**	PG9MTAV60125*A**	46,500	11.5	14.0
3466503	PA13NAZ48-B	CNPH*4821A**	PG9MXA048080	46,500	11.5	14.0
3466504	PA13NAZ48-B	CNPH*4821A**	PG9MXA060100	46,500	11.5	14.0
3466505	PA13NAZ48-B	CNPH*4821A**	PG9MXA060120	46,500	11.5	14.0
3466498	PA13NAZ48-B	CNPH*4821A**+TDR		47,000	11.0	13.0
3466509	PA13NAZ48-B	CNPH*6024A**	PG8*EA048070	47,000	11.0	13.5
3466510	PA13NAZ48-B	CNPH*6024A**	PG8*EA048090	47,000	12.0	14.5
3466511	PA13NAZ48-B	CNPH*6024A**	PG8*EA060110	47,000	12.0	14.5
3466512	PA13NAZ48-B	CNPH*6024A**	PG8*EA060135	47,000	12.0	14.5
3466516	PA13NAZ48-B	CNPH*6024A**	PG9MTAV60100*A**	47,000	11.5	14.0
3466517	PA13NAZ48-B	CNPH*6024A**	PG9MTAV60125*A**	47,000	11.5	14.0
3466513	PA13NAZ48-B	CNPH*6024A**	PG9MXA048080	47,000	12.0	14.5
3466514	PA13NAZ48-B	CNPH*6024A**	PG9MXA060100	47,000	12.0	14.5
3466515	PA13NAZ48-B	CNPH*6024A**	PG9MXA060120	47,000	12.0	14.5
3466508	PA13NAZ48-B	CNPH*6024A**+TDR		47,500	11.0	13.0
3466519	PA13NAZ48-B	CNPH*6124A**	PG8*EA048070	47,000	11.0	13.5
3466520	PA13NAZ48-B	CNPH*6124A**	PG8*EA048090	47,000	12.0	14.5
3466521	PA13NAZ48-B	CNPH*6124A**	PG8*EA060110	47,000	12.0	14.5
3466522	PA13NAZ48-B	CNPH*6124A**	PG8*EA060135	47,000	12.0	14.5
3466526	PA13NAZ48-B	CNPH*6124A**	PG9MTAV60100*A**	47,000	11.5	14.0
3466527	PA13NAZ48-B	CNPH*6124A**	PG9MTAV60125*A**	47,000	11.5	14.0
3466523	PA13NAZ48-B	CNPH*6124A**	PG9MXA048080	47,000	12.0	14.5
3466524	PA13NAZ48-B	CNPH*6124A**	PG9MXA060100	47,000	12.0	14.5
3466525	PA13NAZ48-B	CNPH*6124A**	PG9MXA060120	47,000	12.0	14.5
3466518	PA13NAZ48-B	CNPH*6124A**+TDR		47,500	11.0	13.0
3466483	PA13NAZ48-B	CNPV*4821A**	PG8*EA048090	46,500	11.5	14.0
3466484	PA13NAZ48-B	CNPV*4821A**	PG8*EA060110	46,500	11.5	14.0
3466485	PA13NAZ48-B	CNPV*4821A**	PG9MXA060100	46,500	11.5	14.0
3466487	PA13NAZ48-B	CNPV*4824A**	PG8*EA060135	46,500	12.0	14.5
3466489	PA13NAZ48-B	CNPV*4824A**	PG9MTAV60125*A**	46,500	11.5	14.0
3466488	PA13NAZ48-B	CNPV*4824A**	PG9MXA060120	46,500	12.0	14.5
3466486	PA13NAZ48-B	CNPV*4824A**+TDR		47,000	11.0	13.0
3466491	PA13NAZ48-B	CNPV*6024A**	PG8*EA060135	47,000	12.0	14.5
3466493	PA13NAZ48-B	CNPV*6024A**	PG9MTAV60125*A**	47,000	12.0	14.5
3466492	PA13NAZ48-B	CNPV*6024A**	PG9MXA060120	47,000	12.0	14.5
3466490	PA13NAZ48-B	CNPV*6024A**+TDR		47,500	11.0	13.0
3466495	PA13NAZ48-B	CNPV*6124A**	PG8*EA060135	47,500	12.0	14.5
3466497	PA13NAZ48-B	CNPV*6124A**	PG9MTAV60125*A**	47,500	12.0	14.5
3466496	PA13NAZ48-B	CNPV*6124A**	PG9MXA060120	47,500	12.0	14.5
3466494	PA13NAZ48-B	CNPV*6124A**+TDR		48,000	11.0	13.0
3466530	PA13NAZ48-B	CSPH*4812A**	PG8*EA048070	46,500	11.0	13.0
3466531	PA13NAZ48-B	CSPH*4812A**	PG8*EA048090	46,500	11.5	14.0
3466532	PA13NAZ48-B	CSPH*4812A**	PG8*EA060110	46,500	11.5	14.0
3466533	PA13NAZ48-B	CSPH*4812A**	PG8*EA060135	46,500	11.5	14.0
3466537	PA13NAZ48-B	CSPH*4812A**	PG9MTAV60100*A**	46,500	11.5	14.0
3466538	PA13NAZ48-B	CSPH*4812A**	PG9MTAV60125*A**	46,500	11.5	14.0
3466534	PA13NAZ48-B	CSPH*4812A**	PG9MXA048080	46,500	11.5	14.0
3466535	PA13NAZ48-B	CSPH*4812A**	PG9MXA060100	46,500	11.5	14.0
3466536	PA13NAZ48-B	CSPH*4812A**	PG9MXA060120	46,500	11.5	14.0
3466529	PA13NAZ48-B	CSPH*4812A**+TDR		47,000	11.0	13.0
3466540	PA13NAZ48-B	CSPH*6012A**	PG8*EA048070	47,000	11.0	13.5
3466541	PA13NAZ48-B	CSPH*6012A**	PG8*EA048090	47,000	11.5	14.0
3466542	PA13NAZ48-B	CSPH*6012A**	PG8*EA060110	47,000	11.5	14.0
3466543	PA13NAZ48-B	CSPH*6012A**	PG8*EA060135	47,000	11.5	14.0
3466547	PA13NAZ48-B	CSPH*6012A**	PG9MTAV60100*A**	47,000	11.5	14.0
3466548	PA13NAZ48-B	CSPH*6012A**	PG9MTAV60125*A**	47,000	12.0	14.5
3466544	PA13NAZ48-B	CSPH*6012A**	PG9MXA048080	47,000	12.0	14.5
3466545	PA13NAZ48-B	CSPH*6012A**	PG9MXA060100	47,000	12.0	14.5
3466546	PA13NAZ48-B	CSPH*6012A**	PG9MXA060120	47,000	12.0	14.5
3466539	PA13NAZ48-B	CSPH*6012A**+TDR		47,500	11.0	13.0

See notes on page 21

AHRI* COMBINATION RATINGS (CONT.)

ARI Ref. No.	Model Number	Indoor Model	Furnace Model	Capacity	EER @ A**	SEER
3466549	PA13NAZ48-B	PF4MNA048		47,000	11.0	13.0
3466551	PA13NAZ48-B	PF4MNA049		47,500	12.0	14.5
3466550	PA13NAZ48-B	PF4MNA060		47,500	11.0	13.0
3466552	PA13NAZ48-B	PF4MNA061		48,000	12.0	14.5
3466553	PA13PAZ48-B	†CNPV*4821A**+TDR		47,000	11.0	13.0
3466555	PA13PAZ48-B	CAP**4817A**	PG8*EA048070	46,500	11.0	13.0
3466556	PA13PAZ48-B	CAP**4817A**	PG9MXA048080	46,500	11.5	14.0
3466554	PA13PAZ48-B	CAP**4817A**+TDR		46,500	11.0	13.0
3466558	PA13PAZ48-B	CAP**4821A**	PG8*EA048090	46,500	11.5	14.0
3466559	PA13PAZ48-B	CAP**4821A**	PG8*EA060110	46,500	11.5	14.0
3466560	PA13PAZ48-B	CAP**4821A**	PG9MXA060100	46,500	11.5	14.0
3466557	PA13PAZ48-B	CAP**4821A**+TDR		47,000	11.0	13.0
3466574	PA13PAZ48-B	CAP**4823A**	PG8*EA048090	46,500	11.5	14.0
3466575	PA13PAZ48-B	CAP**4823A**	PG8*EA060110	46,500	11.5	14.0
3466577	PA13PAZ48-B	CAP**4823A**	PG9MTAV60100*A**	46,500	11.0	13.5
3466576	PA13PAZ48-B	CAP**4823A**	PG9MXA060100	46,500	11.5	14.0
3466573	PA13PAZ48-B	CAP**4823A**+TDR		47,000	11.0	13.0
3466562	PA13PAZ48-B	CAP**4824A**	PG8*EA060135	46,500	11.5	14.0
3466564	PA13PAZ48-B	CAP**4824A**	PG9MTAV60125*A**	46,500	11.5	14.0
3466563	PA13PAZ48-B	CAP**4824A**	PG9MXA060120	46,500	11.5	14.0
3466561	PA13PAZ48-B	CAP**4824A**+TDR		47,000	11.0	13.0
3466566	PA13PAZ48-B	CAP**6021A**	PG8*EA048090	47,000	12.0	14.5
3466567	PA13PAZ48-B	CAP**6021A**	PG8*EA060110	47,000	12.0	14.5
3466568	PA13PAZ48-B	CAP**6021A**	PG9MXA060100	47,000	12.0	14.5
3466565	PA13PAZ48-B	CAP**6021A**+TDR		47,500	11.0	13.0
3466570	PA13PAZ48-B	CAP**6024A**	PG8*EA060135	47,000	12.0	14.5
3466572	PA13PAZ48-B	CAP**6024A**	PG9MTAV60125*A**	47,000	12.0	14.5
3466571	PA13PAZ48-B	CAP**6024A**	PG9MXA060120	47,000	12.0	14.5
3466569	PA13PAZ48-B	CAP**6024A**+TDR		47,500	11.0	13.0
3466579	PA13PAZ48-B	CAP**6025A**	PG8*EA060135	47,000	12.0	14.5
3466581	PA13PAZ48-B	CAP**6025A**	PG9MTAV60125*A**	47,000	12.0	14.5
3466580	PA13PAZ48-B	CAP**6025A**	PG9MXA060120	47,000	12.0	14.5
3466578	PA13PAZ48-B	CAP**6025A**+TDR		47,500	11.0	13.0
3466627	PA13PAZ48-B	CNPF*4818A**+TDR		46,000	11.0	13.0
3466598	PA13PAZ48-B	CNPH*4821A**	PG8*EA048070	46,500	11.0	13.0
3466599	PA13PAZ48-B	CNPH*4821A**	PG8*EA048090	46,500	11.5	14.0
3466600	PA13PAZ48-B	CNPH*4821A**	PG8*EA060110	46,500	11.5	14.0
3466601	PA13PAZ48-B	CNPH*4821A**	PG8*EA060135	46,500	11.5	14.0
3466605	PA13PAZ48-B	CNPH*4821A**	PG9MTAV60100*A**	46,500	11.5	14.0
3466606	PA13PAZ48-B	CNPH*4821A**	PG9MTAV60125*A**	46,500	11.5	14.0
3466602	PA13PAZ48-B	CNPH*4821A**	PG9MXA048080	46,500	11.5	14.0
3466603	PA13PAZ48-B	CNPH*4821A**	PG9MXA060100	46,500	11.5	14.0
3466604	PA13PAZ48-B	CNPH*4821A**	PG9MXA060120	46,500	11.5	14.0
3466597	PA13PAZ48-B	CNPH*4821A**+TDR		47,000	11.0	13.0
3466608	PA13PAZ48-B	CNPH*6024A**	PG8*EA048070	47,000	11.0	13.5
3466609	PA13PAZ48-B	CNPH*6024A**	PG8*EA048090	47,000	12.0	14.5
3466610	PA13PAZ48-B	CNPH*6024A**	PG8*EA060110	47,000	12.0	14.5
3466611	PA13PAZ48-B	CNPH*6024A**	PG8*EA060135	47,000	12.0	14.5
3466615	PA13PAZ48-B	CNPH*6024A**	PG9MTAV60100*A**	47,000	11.5	14.0
3466616	PA13PAZ48-B	CNPH*6024A**	PG9MTAV60125*A**	47,000	11.5	14.0
3466612	PA13PAZ48-B	CNPH*6024A**	PG9MXA048080	47,000	12.0	14.5
3466613	PA13PAZ48-B	CNPH*6024A**	PG9MXA060100	47,000	12.0	14.5
3466614	PA13PAZ48-B	CNPH*6024A**	PG9MXA060120	47,000	12.0	14.5
3466607	PA13PAZ48-B	CNPH*6024A**+TDR		47,500	11.0	13.0
3466618	PA13PAZ48-B	CNPH*6124A**	PG8*EA048070	47,000	11.0	13.5
3466619	PA13PAZ48-B	CNPH*6124A**	PG8*EA048090	47,000	12.0	14.5
3466620	PA13PAZ48-B	CNPH*6124A**	PG8*EA060110	47,000	12.0	14.5
3466621	PA13PAZ48-B	CNPH*6124A**	PG8*EA060135	47,000	12.0	14.5
3466625	PA13PAZ48-B	CNPH*6124A**	PG9MTAV60100*A**	47,000	11.5	14.0
3466626	PA13PAZ48-B	CNPH*6124A**	PG9MTAV60125*A**	47,000	11.5	14.0
3466622	PA13PAZ48-B	CNPH*6124A**	PG9MXA048080	47,000	12.0	14.5
3466623	PA13PAZ48-B	CNPH*6124A**	PG9MXA060100	47,000	12.0	14.5
3466624	PA13PAZ48-B	CNPH*6124A**	PG9MXA060120	47,000	12.0	14.5
3466617	PA13PAZ48-B	CNPH*6124A**+TDR		47,500	11.0	13.0
3466582	PA13PAZ48-B	CNPV*4821A**	PG8*EA048090	46,500	11.5	14.0
3466583	PA13PAZ48-B	CNPV*4821A**	PG8*EA060110	46,500	11.5	14.0
3466584	PA13PAZ48-B	CNPV*4821A**	PG9MXA060100	46,500	11.5	14.0
3466586	PA13PAZ48-B	CNPV*4824A**	PG8*EA060135	46,500	12.0	14.5
3466588	PA13PAZ48-B	CNPV*4824A**	PG9MTAV60125*A**	46,500	11.5	14.0
3466587	PA13PAZ48-B	CNPV*4824A**	PG9MXA060120	46,500	12.0	14.5
3466585	PA13PAZ48-B	CNPV*4824A**+TDR		47,000	11.0	13.0
3466590	PA13PAZ48-B	CNPV*6024A**	PG8*EA060135	47,000	12.0	14.5
3466592	PA13PAZ48-B	CNPV*6024A**	PG9MTAV60125*A**	47,000	12.0	14.5
3466591	PA13PAZ48-B	CNPV*6024A**	PG9MXA060120	47,000	12.0	14.5
3466589	PA13PAZ48-B	CNPV*6024A**+TDR		47,500	11.0	13.0
3466594	PA13PAZ48-B	CNPV*6124A**	PG8*EA060135	47,500	12.0	14.5
3466596	PA13PAZ48-B	CNPV*6124A**	PG9MTAV60125*A**	47,500	12.0	14.5
3466595	PA13PAZ48-B	CNPV*6124A**	PG9MXA060120	47,500	12.0	14.5

PA13NAZ

See notes on page 21

AHRI* COMBINATION RATINGS (CONT.)

PA13NAZ

ARI Ref. No.	Model Number	Indoor Model	Furnace Model	Capacity	EER @ A**	SEER
3466593	PA13PAZ48-B	CNPV*6124A**+TDR		48,000	11.0	13.0
3466629	PA13PAZ48-B	CSPH*4812A**	PG8*EA048070	46,500	11.0	13.0
3466630	PA13PAZ48-B	CSPH*4812A**	PG8*EA048090	46,500	11.5	14.0
3466631	PA13PAZ48-B	CSPH*4812A**	PG8*EA060110	46,500	11.5	14.0
3466632	PA13PAZ48-B	CSPH*4812A**	PG8*EA060135	46,500	11.5	14.0
3466636	PA13PAZ48-B	CSPH*4812A**	PG9MTAV60100*A**	46,500	11.5	14.0
3466637	PA13PAZ48-B	CSPH*4812A**	PG9MTAV60125*A**	46,500	11.5	14.0
3466633	PA13PAZ48-B	CSPH*4812A**	PG9MXA048080	46,500	11.5	14.0
3466634	PA13PAZ48-B	CSPH*4812A**	PG9MXA060100	46,500	11.5	14.0
3466635	PA13PAZ48-B	CSPH*4812A**	PG9MXA060120	46,500	11.5	14.0
3466628	PA13PAZ48-B	CSPH*4812A**+TDR		47,000	11.0	13.0
3466639	PA13PAZ48-B	CSPH*6012A**	PG8*EA048070	47,000	11.0	13.5
3466640	PA13PAZ48-B	CSPH*6012A**	PG8*EA048090	47,000	11.5	14.0
3466641	PA13PAZ48-B	CSPH*6012A**	PG8*EA060110	47,000	11.5	14.0
3466642	PA13PAZ48-B	CSPH*6012A**	PG8*EA060135	47,000	11.5	14.0
3466646	PA13PAZ48-B	CSPH*6012A**	PG9MTAV60100*A**	47,000	11.5	14.0
3466647	PA13PAZ48-B	CSPH*6012A**	PG9MTAV60125*A**	47,000	12.0	14.5
3466643	PA13PAZ48-B	CSPH*6012A**	PG9MXA048080	47,000	12.0	14.5
3466644	PA13PAZ48-B	CSPH*6012A**	PG9MXA060100	47,000	12.0	14.5
3466645	PA13PAZ48-B	CSPH*6012A**	PG9MXA060120	47,000	12.0	14.5
3466638	PA13PAZ48-B	CSPH*6012A**+TDR		47,500	11.0	13.0
3466648	PA13PAZ48-B	PF4MNA048		47,000	11.0	13.0
3466650	PA13PAZ48-B	PF4MNA049		47,500	12.0	14.5
3466649	PA13PAZ48-B	PF4MNA060		47,500	11.0	13.0
3466651	PA13PAZ48-B	PF4MNA061		48,000	12.0	14.5
3466652	PA13EAZ48-B	†CNPV*4821A**+TDR		47,000	11.0	13.0
3466654	PA13EAZ48-B	CAP**4817A**	PG8*EA048070	46,500	11.0	13.0
3466655	PA13EAZ48-B	CAP**4817A**	PG9MXA048080	46,500	11.5	14.0
3466653	PA13EAZ48-B	CAP**4817A**+TDR		46,500	11.0	13.0
3466657	PA13EAZ48-B	CAP**4821A**	PG8*EA048090	46,500	11.5	14.0
3466658	PA13EAZ48-B	CAP**4821A**	PG8*EA060110	46,500	11.5	14.0
3466659	PA13EAZ48-B	CAP**4821A**	PG9MXA060100	46,500	11.5	14.0
3466656	PA13EAZ48-B	CAP**4821A**+TDR		47,000	11.0	13.0
3466673	PA13EAZ48-B	CAP**4823A**	PG8*EA048090	46,500	11.5	14.0
3466674	PA13EAZ48-B	CAP**4823A**	PG8*EA060110	46,500	11.5	14.0
3466676	PA13EAZ48-B	CAP**4823A**	PG9MTAV60100*A**	46,500	11.0	13.5
3466675	PA13EAZ48-B	CAP**4823A**	PG9MXA060100	46,500	11.5	14.0
3466672	PA13EAZ48-B	CAP**4823A**+TDR		47,000	11.0	13.0
3466661	PA13EAZ48-B	CAP**4824A**	PG8*EA060135	46,500	11.5	14.0
3466663	PA13EAZ48-B	CAP**4824A**	PG9MTAV60125*A**	46,500	11.5	14.0
3466662	PA13EAZ48-B	CAP**4824A**	PG9MXA060120	46,500	11.5	14.0
3466660	PA13EAZ48-B	CAP**4824A**+TDR		47,000	11.0	13.0
3466665	PA13EAZ48-B	CAP**6021A**	PG8*EA048090	47,000	12.0	14.5
3466666	PA13EAZ48-B	CAP**6021A**	PG8*EA060110	47,000	12.0	14.5
3466667	PA13EAZ48-B	CAP**6021A**	PG9MXA060100	47,000	12.0	14.5
3466664	PA13EAZ48-B	CAP**6021A**+TDR		47,500	11.0	13.0
3466669	PA13EAZ48-B	CAP**6024A**	PG8*EA060135	47,000	12.0	14.5
3466671	PA13EAZ48-B	CAP**6024A**	PG9MTAV60125*A**	47,000	12.0	14.5
3466670	PA13EAZ48-B	CAP**6024A**	PG9MXA060120	47,000	12.0	14.5
3466668	PA13EAZ48-B	CAP**6024A**+TDR		47,500	11.0	13.0
3466678	PA13EAZ48-B	CAP**6025A**	PG8*EA060135	47,000	12.0	14.5
3466680	PA13EAZ48-B	CAP**6025A**	PG9MTAV60125*A**	47,000	12.0	14.5
3466679	PA13EAZ48-B	CAP**6025A**	PG9MXA060120	47,000	12.0	14.5
3466677	PA13EAZ48-B	CAP**6025A**+TDR		47,500	11.0	13.0
3466726	PA13EAZ48-B	CNPF*4818A**+TDR		46,000	11.0	13.0
3466697	PA13EAZ48-B	CNPH*4821A**	PG8*EA048070	46,500	11.0	13.0
3466698	PA13EAZ48-B	CNPH*4821A**	PG8*EA048090	46,500	11.5	14.0
3466699	PA13EAZ48-B	CNPH*4821A**	PG8*EA060110	46,500	11.5	14.0
3466700	PA13EAZ48-B	CNPH*4821A**	PG8*EA060135	46,500	11.5	14.0
3466704	PA13EAZ48-B	CNPH*4821A**	PG9MTAV60100*A**	46,500	11.5	14.0
3466705	PA13EAZ48-B	CNPH*4821A**	PG9MTAV60125*A**	46,500	11.5	14.0
3466701	PA13EAZ48-B	CNPH*4821A**	PG9MXA048080	46,500	11.5	14.0
3466702	PA13EAZ48-B	CNPH*4821A**	PG9MXA060100	46,500	11.5	14.0
3466703	PA13EAZ48-B	CNPH*4821A**	PG9MXA060120	46,500	11.5	14.0
3466696	PA13EAZ48-B	CNPH*4821A**+TDR		47,000	11.0	13.0
3466707	PA13EAZ48-B	CNPH*6024A**	PG8*EA048070	47,000	11.0	13.5
3466708	PA13EAZ48-B	CNPH*6024A**	PG8*EA048090	47,000	12.0	14.5
3466709	PA13EAZ48-B	CNPH*6024A**	PG8*EA060110	47,000	12.0	14.5
3466710	PA13EAZ48-B	CNPH*6024A**	PG8*EA060135	47,000	12.0	14.5
3466714	PA13EAZ48-B	CNPH*6024A**	PG9MTAV60100*A**	47,000	11.5	14.0
3466715	PA13EAZ48-B	CNPH*6024A**	PG9MTAV60125*A**	47,000	11.5	14.0
3466711	PA13EAZ48-B	CNPH*6024A**	PG9MXA048080	47,000	12.0	14.5
3466712	PA13EAZ48-B	CNPH*6024A**	PG9MXA060100	47,000	12.0	14.5
3466713	PA13EAZ48-B	CNPH*6024A**	PG9MXA060120	47,000	12.0	14.5
3466706	PA13EAZ48-B	CNPH*6024A**+TDR		47,500	11.0	13.0
3466717	PA13EAZ48-B	CNPH*6124A**	PG8*EA048070	47,000	11.0	13.5
3466718	PA13EAZ48-B	CNPH*6124A**	PG8*EA048090	47,000	12.0	14.5
3466719	PA13EAZ48-B	CNPH*6124A**	PG8*EA060110	47,000	12.0	14.5

See notes on page 21

AHRI* COMBINATION RATINGS (CONT.)

ARI Ref. No.	Model Number	Indoor Model	Furnace Model	Capacity	EER @ A**	SEER
3466720	PA13EAZ48-B	CNPH*6124A**	PG8*EA060135	47,000	12.0	14.5
3466724	PA13EAZ48-B	CNPH*6124A**	PG9MTAV60100*A**	47,000	11.5	14.0
3466725	PA13EAZ48-B	CNPH*6124A**	PG9MTAV60125*A**	47,000	11.5	14.0
3466721	PA13EAZ48-B	CNPH*6124A**	PG9MXA048080	47,000	12.0	14.5
3466722	PA13EAZ48-B	CNPH*6124A**	PG9MXA060100	47,000	12.0	14.5
3466723	PA13EAZ48-B	CNPH*6124A**	PG9MXA060120	47,000	12.0	14.5
3466716	PA13EAZ48-B	CNPH*6124A**+TDR		47,500	11.0	13.0
3466681	PA13EAZ48-B	CNPV*4821A**	PG8*EA048090	46,500	11.5	14.0
3466682	PA13EAZ48-B	CNPV*4821A**	PG8*EA060110	46,500	11.5	14.0
3466683	PA13EAZ48-B	CNPV*4821A**	PG9MXA060100	46,500	11.5	14.0
3466685	PA13EAZ48-B	CNPV*4824A**	PG8*EA060135	46,500	12.0	14.5
3466687	PA13EAZ48-B	CNPV*4824A**	PG9MTAV60125*A**	46,500	11.5	14.0
3466686	PA13EAZ48-B	CNPV*4824A**	PG9MXA060120	46,500	12.0	14.5
3466684	PA13EAZ48-B	CNPV*4824A**+TDR		47,000	11.0	13.0
3466689	PA13EAZ48-B	CNPV*6024A**	PG8*EA060135	47,000	12.0	14.5
3466691	PA13EAZ48-B	CNPV*6024A**	PG9MTAV60125*A**	47,000	12.0	14.5
3466690	PA13EAZ48-B	CNPV*6024A**	PG9MXA060120	47,000	12.0	14.5
3466688	PA13EAZ48-B	CNPV*6024A**+TDR		47,500	11.0	13.0
3466693	PA13EAZ48-B	CNPV*6124A**	PG8*EA060135	47,500	12.0	14.5
3466695	PA13EAZ48-B	CNPV*6124A**	PG9MTAV60125*A**	47,500	12.0	14.5
3466694	PA13EAZ48-B	CNPV*6124A**	PG9MXA060120	47,500	12.0	14.5
3466692	PA13EAZ48-B	CNPV*6124A**+TDR		48,000	11.0	13.0
3466728	PA13EAZ48-B	CSPH*4812A**	PG8*EA048070	46,500	11.0	13.0
3466729	PA13EAZ48-B	CSPH*4812A**	PG8*EA048090	46,500	11.5	14.0
3466730	PA13EAZ48-B	CSPH*4812A**	PG8*EA060110	46,500	11.5	14.0
3466731	PA13EAZ48-B	CSPH*4812A**	PG8*EA060135	46,500	11.5	14.0
3466735	PA13EAZ48-B	CSPH*4812A**	PG9MTAV60100*A**	46,500	11.5	14.0
3466736	PA13EAZ48-B	CSPH*4812A**	PG9MTAV60125*A**	46,500	11.5	14.0
3466732	PA13EAZ48-B	CSPH*4812A**	PG9MXA048080	46,500	11.5	14.0
3466733	PA13EAZ48-B	CSPH*4812A**	PG9MXA060100	46,500	11.5	14.0
3466734	PA13EAZ48-B	CSPH*4812A**	PG9MXA060120	46,500	11.5	14.0
3466727	PA13EAZ48-B	CSPH*4812A**+TDR		47,000	11.0	13.0
3466738	PA13EAZ48-B	CSPH*6012A**	PG8*EA048070	47,000	11.0	13.5
3466739	PA13EAZ48-B	CSPH*6012A**	PG8*EA048090	47,000	11.5	14.0
3466740	PA13EAZ48-B	CSPH*6012A**	PG8*EA060110	47,000	11.5	14.0
3466741	PA13EAZ48-B	CSPH*6012A**	PG8*EA060135	47,000	11.5	14.0
3466745	PA13EAZ48-B	CSPH*6012A**	PG9MTAV60100*A**	47,000	11.5	14.0
3466746	PA13EAZ48-B	CSPH*6012A**	PG9MTAV60125*A**	47,000	12.0	14.5
3466742	PA13EAZ48-B	CSPH*6012A**	PG9MXA048080	47,000	12.0	14.5
3466743	PA13EAZ48-B	CSPH*6012A**	PG9MXA060100	47,000	12.0	14.5
3466744	PA13EAZ48-B	CSPH*6012A**	PG9MXA060120	47,000	12.0	14.5
3466737	PA13EAZ48-B	CSPH*6012A**+TDR		47,500	11.0	13.0
3466747	PA13EAZ48-B	PF4MNA048		47,000	11.0	13.0
3466749	PA13EAZ48-B	PF4MNA049		47,500	12.0	14.5
3466748	PA13EAZ48-B	PF4MNA060		47,500	11.0	13.0
3466750	PA13EAZ48-B	PF4MNA061		48,000	12.0	14.5
3466751	PA13NAZ60-B	†CNPV*6024A**+TDR		57,000	11.0	13.0
3466753	PA13NAZ60-B	CAP**6021A**	PG8*EA048090	56,000	11.0	13.2
3466754	PA13NAZ60-B	CAP**6021A**	PG8*EA060110	56,000	11.0	13.5
3466755	PA13NAZ60-B	CAP**6021A**	PG9MXA060100	56,000	11.0	13.2
3466752	PA13NAZ60-B	CAP**6021A**+TDR		56,500	11.0	13.0
3466757	PA13NAZ60-B	CAP**6024A**	PG8*EA060135	56,000	11.0	13.2
3466758	PA13NAZ60-B	CAP**6024A**	PG9MXA060120	56,000	11.0	13.5
3466756	PA13NAZ60-B	CAP**6024A**+TDR		57,000	11.0	13.0
3466760	PA13NAZ60-B	CAP**6025A**	PG8*EA060135	56,000	11.0	13.2
3466761	PA13NAZ60-B	CAP**6025A**	PG9MXA060120	56,000	11.0	13.5
3466759	PA13NAZ60-B	CAP**6025A**+TDR		57,000	11.0	13.0
3466768	PA13NAZ60-B	CNPH*6024A**	PG8*EA048090	56,000	11.0	13.2
3466769	PA13NAZ60-B	CNPH*6024A**	PG8*EA060110	56,000	11.0	13.5
3466770	PA13NAZ60-B	CNPH*6024A**	PG8*EA060135	56,000	11.0	13.5
3466771	PA13NAZ60-B	CNPH*6024A**	PG9MXA048080	56,000	11.0	13.2
3466772	PA13NAZ60-B	CNPH*6024A**	PG9MXA060100	56,000	11.0	13.5
3466773	PA13NAZ60-B	CNPH*6024A**	PG9MXA060120	56,000	11.0	13.5
3466767	PA13NAZ60-B	CNPH*6024A**+TDR		57,000	11.0	13.0
3466775	PA13NAZ60-B	CNPH*6124A**	PG8*EA048090	56,000	11.0	13.2
3466776	PA13NAZ60-B	CNPH*6124A**	PG8*EA060110	56,000	11.0	13.5
3466777	PA13NAZ60-B	CNPH*6124A**	PG8*EA060135	56,000	11.0	13.2
3466778	PA13NAZ60-B	CNPH*6124A**	PG9MXA048080	56,000	11.0	13.2
3466779	PA13NAZ60-B	CNPH*6124A**	PG9MXA060100	56,000	11.0	13.5
3466780	PA13NAZ60-B	CNPH*6124A**	PG9MXA060120	56,000	11.0	13.5
3466774	PA13NAZ60-B	CNPH*6124A**+TDR		57,000	11.0	13.0
3466762	PA13NAZ60-B	CNPV*6024A**	PG8*EA060135	56,000	11.0	13.5
3466763	PA13NAZ60-B	CNPV*6024A**	PG9MXA060120	56,000	11.0	13.5
3466765	PA13NAZ60-B	CNPV*6124A**	PG8*EA060135	56,000	11.0	13.5
3466766	PA13NAZ60-B	CNPV*6124A**	PG9MXA060120	56,000	11.0	13.5
3466764	PA13NAZ60-B	CNPV*6124A**+TDR		56,000	11.0	13.0
3466782	PA13NAZ60-B	CSPH*6012A**	PG8*EA048090	56,000	11.0	13.2
3466783	PA13NAZ60-B	CSPH*6012A**	PG8*EA060110	56,000	11.0	13.5

PA13NAZ

See notes on page 21

AHRI* COMBINATION RATINGS (CONT.)

PA13NAZ

ARI Ref. No.	Model Number	Indoor Model	Furnace Model	Capacity	EER @ A**	SEER
3466784	PA13NAZ60-B	CSPH*6012A**	PG8*EA060135	56,000	11.0	13.5
3466785	PA13NAZ60-B	CSPH*6012A**	PG9MXA048080	56,000	11.0	13.2
3466786	PA13NAZ60-B	CSPH*6012A**	PG9MXA060100	56,000	11.0	13.5
3466787	PA13NAZ60-B	CSPH*6012A**	PG9MXA060120	56,000	11.0	13.5
3466781	PA13NAZ60-B	CSPH*6012A**+TDR		57,000	11.0	13.0
3466788	PA13NAZ60-B	PF4MNA060		57,000	10.5	13.0
3466789	PA13NAZ60-B	PF4MNA061		57,500	11.0	13.5
3466790	PA13PAZ60-B	†CNPV*6024A**+TDR		57,000	11.0	13.0
3466792	PA13PAZ60-B	CAP**6021A**	PG8*EA048090	56,000	11.0	13.2
3466793	PA13PAZ60-B	CAP**6021A**	PG8*EA060110	56,000	11.0	13.5
3466794	PA13PAZ60-B	CAP**6021A**	PG9MXA060100	56,000	11.0	13.2
3466791	PA13PAZ60-B	CAP**6021A**+TDR		56,500	11.0	13.0
3466796	PA13PAZ60-B	CAP**6024A**	PG8*EA060135	56,000	11.0	13.2
3466797	PA13PAZ60-B	CAP**6024A**	PG9MXA060120	56,000	11.0	13.5
3466795	PA13PAZ60-B	CAP**6024A**+TDR		57,000	11.0	13.0
3466799	PA13PAZ60-B	CAP**6025A**	PG8*EA060135	56,000	11.0	13.2
3466800	PA13PAZ60-B	CAP**6025A**	PG9MXA060120	56,000	11.0	13.5
3466798	PA13PAZ60-B	CAP**6025A**+TDR		57,000	11.0	13.0
3466807	PA13PAZ60-B	CNPH*6024A**	PG8*EA048090	56,000	11.0	13.2
3466808	PA13PAZ60-B	CNPH*6024A**	PG8*EA060110	56,000	11.0	13.5
3466809	PA13PAZ60-B	CNPH*6024A**	PG8*EA060135	56,000	11.0	13.5
3466810	PA13PAZ60-B	CNPH*6024A**	PG9MXA048080	56,000	11.0	13.2
3466811	PA13PAZ60-B	CNPH*6024A**	PG9MXA060100	56,000	11.0	13.5
3466812	PA13PAZ60-B	CNPH*6024A**	PG9MXA060120	56,000	11.0	13.5
3466806	PA13PAZ60-B	CNPH*6024A**+TDR		57,000	11.0	13.0
3466814	PA13PAZ60-B	CNPH*6124A**	PG8*EA048090	56,000	11.0	13.2
3466815	PA13PAZ60-B	CNPH*6124A**	PG8*EA060110	56,000	11.0	13.5
3466816	PA13PAZ60-B	CNPH*6124A**	PG8*EA060135	56,000	11.0	13.2
3466817	PA13PAZ60-B	CNPH*6124A**	PG9MXA048080	56,000	11.0	13.2
3466818	PA13PAZ60-B	CNPH*6124A**	PG9MXA060100	56,000	11.0	13.5
3466819	PA13PAZ60-B	CNPH*6124A**	PG9MXA060120	56,000	11.0	13.5
3466813	PA13PAZ60-B	CNPH*6124A**+TDR		57,000	11.0	13.0
3466801	PA13PAZ60-B	CNPV*6024A**	PG8*EA060135	56,000	11.0	13.5
3466802	PA13PAZ60-B	CNPV*6024A**	PG9MXA060120	56,000	11.0	13.5
3466804	PA13PAZ60-B	CNPV*6124A**	PG8*EA060135	56,000	11.0	13.5
3466805	PA13PAZ60-B	CNPV*6124A**	PG9MXA060120	56,000	11.0	13.5
3466803	PA13PAZ60-B	CNPV*6124A**+TDR		56,000	11.0	13.0
3466821	PA13PAZ60-B	CSPH*6012A**	PG8*EA048090	56,000	11.0	13.2
3466822	PA13PAZ60-B	CSPH*6012A**	PG8*EA060110	56,000	11.0	13.5
3466823	PA13PAZ60-B	CSPH*6012A**	PG8*EA060135	56,000	11.0	13.5
3466824	PA13PAZ60-B	CSPH*6012A**	PG9MXA048080	56,000	11.0	13.2
3466825	PA13PAZ60-B	CSPH*6012A**	PG9MXA060100	56,000	11.0	13.5
3466826	PA13PAZ60-B	CSPH*6012A**	PG9MXA060120	56,000	11.0	13.5
3466820	PA13PAZ60-B	CSPH*6012A**+TDR		57,000	11.0	13.0
3466827	PA13PAZ60-B	PF4MNA060		57,000	10.5	13.0
3466828	PA13PAZ60-B	PF4MNA061		57,500	11.0	13.5
3466829	PA13EAZ60-B	†CNPV*6024A**+TDR		57,000	11.0	13.0
3466831	PA13EAZ60-B	CAP**6021A**	PG8*EA048090	56,000	11.0	13.2
3466832	PA13EAZ60-B	CAP**6021A**	PG8*EA060110	56,000	11.0	13.5
3466833	PA13EAZ60-B	CAP**6021A**	PG9MXA060100	56,000	11.0	13.2
3466830	PA13EAZ60-B	CAP**6021A**+TDR		56,500	11.0	13.0
3466835	PA13EAZ60-B	CAP**6024A**	PG8*EA060135	56,000	11.0	13.2
3466836	PA13EAZ60-B	CAP**6024A**	PG9MXA060120	56,000	11.0	13.5
3466834	PA13EAZ60-B	CAP**6024A**+TDR		57,000	11.0	13.0
3466838	PA13EAZ60-B	CAP**6025A**	PG8*EA060135	56,000	11.0	13.2
3466839	PA13EAZ60-B	CAP**6025A**	PG9MXA060120	56,000	11.0	13.5
3466837	PA13EAZ60-B	CAP**6025A**+TDR		57,000	11.0	13.0
3466846	PA13EAZ60-B	CNPH*6024A**	PG8*EA048090	56,000	11.0	13.2
3466847	PA13EAZ60-B	CNPH*6024A**	PG8*EA060110	56,000	11.0	13.5
3466848	PA13EAZ60-B	CNPH*6024A**	PG8*EA060135	56,000	11.0	13.5
3466849	PA13EAZ60-B	CNPH*6024A**	PG9MXA048080	56,000	11.0	13.2
3466850	PA13EAZ60-B	CNPH*6024A**	PG9MXA060100	56,000	11.0	13.5
3466851	PA13EAZ60-B	CNPH*6024A**	PG9MXA060120	56,000	11.0	13.5
3466845	PA13EAZ60-B	CNPH*6024A**+TDR		57,000	11.0	13.0
3466853	PA13EAZ60-B	CNPH*6124A**	PG8*EA048090	56,000	11.0	13.2
3466854	PA13EAZ60-B	CNPH*6124A**	PG8*EA060110	56,000	11.0	13.5
3466855	PA13EAZ60-B	CNPH*6124A**	PG8*EA060135	56,000	11.0	13.2
3466856	PA13EAZ60-B	CNPH*6124A**	PG9MXA048080	56,000	11.0	13.2
3466857	PA13EAZ60-B	CNPH*6124A**	PG9MXA060100	56,000	11.0	13.5
3466858	PA13EAZ60-B	CNPH*6124A**	PG9MXA060120	56,000	11.0	13.5
3466852	PA13EAZ60-B	CNPH*6124A**+TDR		57,000	11.0	13.0
3466840	PA13EAZ60-B	CNPV*6024A**	PG8*EA060135	56,000	11.0	13.5
3466841	PA13EAZ60-B	CNPV*6024A**	PG9MXA060120	56,000	11.0	13.5
3466843	PA13EAZ60-B	CNPV*6124A**	PG8*EA060135	56,000	11.0	13.5
3466844	PA13EAZ60-B	CNPV*6124A**	PG9MXA060120	56,000	11.0	13.5
3466842	PA13EAZ60-B	CNPV*6124A**+TDR		56,000	11.0	13.0
3466860	PA13EAZ60-B	CSPH*6012A**	PG8*EA048090	56,000	11.0	13.2

See notes on page 21

AHRI* COMBINATION RATINGS (CONT.)

ARI Ref. No.	Model Number	Indoor Model	Furnace Model	Capacity	EER @ A**	SEER
3466861	PA13EAZ60-B	CSPH*6012A**	PG8*EA060110	56,000	11.0	13.5
3466862	PA13EAZ60-B	CSPH*6012A**	PG8*EA060135	56,000	11.0	13.5
3466863	PA13EAZ60-B	CSPH*6012A**	PG9MXA048080	56,000	11.0	13.2
3466864	PA13EAZ60-B	CSPH*6012A**	PG9MXA060100	56,000	11.0	13.5
3466865	PA13EAZ60-B	CSPH*6012A**	PG9MXA060120	56,000	11.0	13.5
3466859	PA13EAZ60-B	CSPH*6012A**+TDR		57,000	11.0	13.0
3466866	PA13EAZ60-B	PF4MNA060		57,000	10.5	13.0
3466867	PA13EAZ60-B	PF4MNA061		57,500	11.0	13.5

* Air Conditioning, Heating & Refrigeration Institute

** "A" conditions—80° F (26.6° C) indoor db/67° F (19.4° C) indoor wb & 95° F (35° C) outdoor db.

† Tested combination

EER — Energy Efficiency Ratio

SEER — Seasonal Energy Efficiency Ratio

TDR — Time—Delay Relay. In most cases, only 1 method should be used to achieve TDR function. Using more than 1 method in a system may cause degradation in performance. Use either the accessory Time—Delay Relay KAATD0101TDR or a furnace equipped with TDR. Most Payne furnaces are equipped with TDR.

TXV — Thermostatic Expansion Valve

NOTES:

1. Ratings are net values reflecting the effects of circulating fan motor heat. Supplemental electric heat is not included.
2. Tested outdoor/indoor combinations have been tested in accordance with DOE test procedures for central air conditioners. Ratings for other combinations are determined under DOE computer simulation procedures.
3. Determine actual CFM values obtainable for your system by referring to fan performance data in fan coil or furnace coil literature.
4. Do not apply with capillary tube coils as performance and reliability are significantly affected.

DETAILED COOLING CAPACITIES#

EVAPORATOR AIR		CONDENSER ENTERING AIR TEMPERATURES ° F (° C)											
CFM	EWB ° F (° C)	75 (23.9)		85 (29.4)		95 (35)		105 (40.6)		115 (46.1)		125 (51.7)	
		Capacity MBtuht	Total System KW**	Capacity MBtuht	Total System KW**	Capacity MBtuht	Total System KW**	Capacity MBtuht	Total System KW**	Capacity MBtuht	Total System KW**	Capacity MBtuht	Total System KW**
		Total	Sens†	Total	Sens†	Total	Sens†	Total	Sens†	Total	Sens†	Total	Sens†
	57 (13.9)	16.42	16.42	15.77	15.77	15.08	15.08	14.37	14.37	13.61	13.61	12.77	12.77
525	62 (16.7)	16.99	14.74	16.17	14.36	13.97	13.97	14.47	13.57	13.60	13.60	12.77	12.77
	67 (19.4)	18.60	12.49	17.68	12.11	16.73	11.73	15.76	11.34	14.73	10.94	13.62	10.50
	72 (22.2)	20.37	10.22	19.36	9.85	18.32	9.46	17.26	9.08	16.14	8.68	14.91	8.24
600	57 (13.9)	17.13	17.13	16.43	16.43	15.69	15.69	14.92	14.92	14.10	14.10	13.20	13.20
	62 (16.7)	17.40	15.83	16.55	15.43	15.70	15.58	14.92	14.92	14.10	14.10	13.20	13.20
	67 (19.4)	18.96	13.28	17.99	12.89	17.00	12.50	16.00	12.11	14.93	11.70	13.78	11.25
	72 (22.2)	20.74	10.71	19.68	10.32	18.59	9.93	17.49	9.54	16.32	9.13	15.05	8.69
675	57 (13.9)	17.71	17.71	16.96	16.96	16.18	16.18	15.37	15.37	14.50	14.50	13.54	13.54
	62 (16.7)	17.76	16.82	16.96	16.96	16.18	16.18	15.37	15.37	14.50	14.50	13.54	13.54
	67 (19.4)	19.22	14.03	18.22	13.84	17.20	13.24	16.17	12.84	15.07	12.42	13.89	11.96
	72 (22.2)	21.00	11.16	19.90	10.77	18.78	10.37	17.65	9.98	16.44	9.56	15.14	9.11

COOLING INDOOR MODEL	CAPACITY	POWER	FURNACE MODEL
*CNPV*1814A**	1.00	1.00	
CAP**2414A**	1.02	1.02	
CAP**2417A**	1.02	1.02	
CNPF*2418A**	1.02	1.02	
CNPH*2417A**	1.02	1.02	
CNPV*2414A**	1.02	1.02	
CNPV*2417A**	1.02	1.02	
CSPH*2412A**	1.02	1.02	
FF-1ENP024	1.02	1.02	
PF4MNA019	1.00	0.96	
PF4MNA025	1.02	0.94	
CAP**1814A**	1.00	0.96	PG8*EA024045
CAP**2414A**	1.02	0.94	PG8*EA024045
CNPH*2417A**	1.02	0.94	PG8*EA024045
CNPV*1814A**	1.00	0.96	PG8*EA024045
CNPV*2414A**	1.02	0.94	PG8*EA024045
CNPV*2417A**	1.02	0.94	PG8*EA024045
CSPH*2412A**	1.02	0.94	PG8*EA024045
CNPH*2417A**	1.02	0.94	PG9MTAV36050*A**
CSPH*2412A**	1.02	0.94	PG9MTAV36050*A**
CNPH*2417A**	1.02	0.94	PG9MTAV36075*A**
CSPH*2412A**	1.02	0.94	PG9MTAV36075*A**
CAP**2417A**	1.02	0.94	PG9MXA036060
CNPH*2417A**	1.02	0.94	PG9MXA036060
CNPV*2417A**	1.02	0.94	PG9MXA036060
CSPH*2412A**	1.02	0.94	PG9MXA036060

See notes on pg. 27

DETAILED COOLING CAPACITIES# (CONT.)

EVAPORATOR AIR		CONDENSER ENTERING AIR TEMPERATURES ° F (° C)										Total System KW**	
CFM	EWB ° F (° C)	75 (23.9)		85 (29.4)		95 (35)		105 (40.6)		115 (46.1)		125 (51.7)	
		Capacity MBtu/ht	Total System KW**	Capacity MBtu/ht	Total System KW**	Capacity MBtu/ht	Total System KW**	Capacity MBtu/ht	Total System KW**	Capacity MBtu/ht	Total System KW**	Capacity MBtu/ht	Total System KW**
		Total	Sens†	Total	Sens†	Total	Sens†	Total	Sens†	Total	Sens†	Total	Sens†
700	57 (13.9)	22.68	22.68	21.80	21.80	20.85	20.85	19.81	19.81	18.65	18.65	17.33	17.33
	62 (16.7)	23.47	19.36	18.97	1.85	21.17	18.96	2.09	19.93	18.65	18.65	17.33	17.33
	67 (19.4)	25.65	16.39	15.90	1.85	23.05	15.38	2.09	21.61	20.04	14.26	2.64	18.30
	72 (22.2)	28.06	13.40	12.91	1.85	25.15	12.38	2.09	23.55	21.80	11.24	2.63	19.84
800	57 (13.9)	23.65	23.65	22.69	1.67	22.69	22.69	21.65	21.65	20.52	20.52	19.27	19.27
	62 (16.7)	24.01	20.79	20.27	1.89	21.67	21.51	2.13	20.52	20.52	17.84	2.68	17.84
	67 (19.4)	26.13	17.43	16.93	1.89	23.40	16.40	2.13	21.90	15.85	2.68	18.47	
	72 (22.2)	28.57	14.05	13.54	1.88	25.51	13.00	2.12	23.83	12.44	2.67	19.98	
900	57 (13.9)	24.44	24.44	23.42	1.92	22.31	22.31	21.10	21.10	19.76	19.76	18.23	18.23
	62 (16.7)	24.50	22.10	21.10	1.92	22.30	22.30	2.17	21.10	19.76	2.71	18.23	
	67 (19.4)	26.49	18.42	17.91	1.92	23.86	17.37	2.16	22.11	16.81	2.71	18.58	
	72 (22.2)	28.93	14.65	14.14	1.92	25.75	13.59	2.16	24.02	12.41	2.71	20.05	

COOLING INDOOR MODEL			CAPACITY			POWER			FURNACE MODEL		
*CNPV*2412A**	1.00	0.96	1.00	0.96	PG9MTAV36075*A**						
CAP**2414A**	1.00	0.92	1.01	0.92	PG9MTAV36075*A**						
CNPV*2417A**	1.00	0.96	1.00	0.96	PG9MTAV60100*A**						
CAP**3014A**	1.01	0.91	1.01	0.92	PG9MTAV60100*A**						
CNPV*3017A**	1.01	0.96	1.00	0.96	PG9MTAV60100*A**						
CAP**2418A**	1.00	1.00	1.01	0.92	PG9MTAV60125*A**						
CNPV*2417A**	1.00	0.96	1.00	0.96	PG9MTAV60125*A**						
CNPV*3017A**	1.01	0.91	1.01	0.92	PG9MTAV60125*A**						
CNPV*2417A**	1.00	0.96	1.00	0.96	PG9MTAV60125*A**						
CNPV*3014A**	1.01	0.91	1.01	0.92	PG9MTAV60125*A**						
CNPV*3017A**	1.01	0.96	1.00	0.96	PG9MTAV60125*A**						
CNPV*3117A**	1.02	0.92	1.01	0.92	PG9MTAV60125*A**						
CNPV*2412A**	1.00	0.96	1.00	0.96	PG9MTAV60125*A**						
CNPV*3012A**	1.01	0.91	1.01	0.92	PG9MTAV60125*A**						
FFIENP024	1.00	1.00	1.00	0.96	PG9MTAV60125*A**						
FFIENP025	1.01	0.96	1.01	0.92	PG9MTAV60125*A**						
FFIENP030	1.00	1.00	1.02	0.93	PG9MTAV60125*A**						
FFIENP031	1.01	0.96	1.00	0.96	PG9MTAV60125*A**						
FFIENP037	1.02	0.97	1.01	0.92	PG9MTAV60125*A**						
PF4MNA024	0.99	0.99	1.00	0.96	PG9MTAV60125*A**						
PF4MNA025	1.00	0.96	1.00	0.96	PG9MTAV60125*A**						
PF4MNA030	1.01	1.01	1.00	0.96	PG9MTAV60125*A**						
PF4MNA031	1.02	0.93	1.01	0.92	PG9MTAV60125*A**						
CAP**2414A**	1.00	0.96	1.00	0.96	PG9MTAV60125*A**						
CAP**3014A**	1.01	0.92	1.01	0.92	PG9MTAV60125*A**						
CNPV*2417A**	1.00	0.96	1.02	0.93	PG9MTAV60125*A**						
CNPV*3017A**	1.01	0.92	1.00	0.96	PG9MTAV60125*A**						
CNPV*2412A**	1.00	0.96	1.00	0.96	PG9MTAV60125*A**						
CNPV*3012A**	1.01	0.91	1.01	0.92	PG9MTAV60125*A**						
CNPV*2414A**	1.01	0.92	1.01	0.92	PG9MTAV60125*A**						
CNPV*3014A**	1.01	0.96	1.00	0.96	PG9MTAV60125*A**						
CNPV*2412A**	1.00	0.96	1.00	0.96	PG9MTAV60125*A**						
CNPV*3012A**	1.01	0.91	1.01	0.92	PG9MTAV60125*A**						
CNPV*2417A**	1.00	0.96	1.00	0.96	PG9MTAV60125*A**						
CNPV*3017A**	1.01	0.96	1.00	0.96	PG9MTAV60125*A**						
CNPV*2412A**	1.00	0.96	1.00	0.96	PG9MTAV60125*A**						
CNPV*3012A**	1.01	0.91	1.01	0.92	PG9MTAV60125*A**						
CNPV*2417A**	1.00	0.96	1.00	0.96	PG9MTAV60125*A**						
CNPV*3017A**	1.01	0.96	1.00	0.96	PG9MTAV60125*A**						

See notes on pg. 27

COOLING INDOOR MODEL			CAPACITY			POWER			FURNACE MODEL		
*CNPV*2414A**	1.00	1.00	1.00	1.00	PG8*EA024045						
CAP**2414A**	1.00	1.00	1.00	1.00	PG8*EA024045						
CNPV*2417A**	1.00	1.00	1.00	1.00	PG8*EA024045						
CAP**3014A**	1.01	1.01	1.01	1.01	PG8*EA024045						
CNPV*3017A**	1.01	1.01	1.01	1.01	PG8*EA024045						
CNPV*2418A**	1.00	1.00	1.00	1.00	PG8*EA024045						
CNPV*2417A**	1.00	1.00	1.00	1.00	PG8*EA024045						
CNPV*3017A**	1.01	1.01	1.01	1.01	PG8*EA024045						
CNPV*2417A**	1.00	1.00	1.00	1.00	PG8*EA024045						
CNPV*3014A**	1.01	1.01	1.01	1.01	PG8*EA024045						
CNPV*3017A**	1.01	1.01	1.01	1.01	PG8*EA024045						
CNPV*2412A**	1.00	1.00	1.00	1.00	PG8*EA024045						
CNPV*3012A**	1.01	1.01	1.01	1.01	PG8*EA024045						
CNPV*2417A**	1.00	1.00	1.00	1.00	PG8*EA024045						
CNPV*3017A**	1.01	1.01	1.01	1.01	PG8*EA024045						
CNPV*2412A**	1.00	1.00	1.00	1.00	PG8*EA024045						
CNPV*3012A**	1.01	1.01	1.01	1.01	PG8*EA024045						
CNPV*2417A**	1.00	1.00	1.00	1.00	PG8*EA024045						
CNPV*3017A**	1.01	1.01	1.01	1.01	PG8*EA024045						
CNPV*2412A**	1.00	1.00	1.00	1.00	PG8*EA024045						
CNPV*3012A**	1.01	1.01	1.01	1.01	PG8*EA024045						
CNPV*2417A**	1.00	1.00	1.00	1.00	PG8*EA024045						
CNPV*3017A**	1.01	1.01	1.01	1.01	PG8*EA024045						

PA13NAZ

DETAILED COOLING CAPACITIES# (CONT.)

EVAPORATOR AIR		CONDENSER ENTERING AIR TEMPERATURES ° F (° C)											
CFM	EWB ° F (° C)	75 (23.9)		85 (29.4)		95 (35)		105 (40.6)		115 (46.1)		125 (51.7)	
		Capacity MBtu/ht	Sens†	Capacity MBtu/ht	Sens†	Capacity MBtu/ht	Sens†	Capacity MBtu/ht	Sens†	Capacity MBtu/ht	Sens†	Capacity MBtu/ht	Sens†
		Total	System KW**	Total	System KW**	Total	System KW**	Total	System KW**	Total	System KW**	Total	System KW**
875	57 (13.9)	27.56	2.06	26.55	2.30	25.49	2.58	24.36	2.88	23.14	3.21	21.77	3.57
	62 (16.7)	28.40	2.05	27.15	2.30	25.85	2.57	24.49	2.88	23.13	3.21	21.77	3.57
	67 (19.4)	31.15	2.05	29.77	2.30	28.31	2.57	26.77	2.87	25.13	3.21	23.33	3.57
	72 (22.2)	34.30	2.05	32.80	2.29	31.23	2.57	29.56	2.87	27.77	3.20	25.81	3.57
	77 (25.0)	38.73	2.10	37.65	2.35	36.52	2.62	35.31	2.92	34.00	3.26	32.55	3.62
1000	57 (13.9)	28.73	2.10	27.81	2.35	26.49	2.62	25.31	2.92	24.00	3.26	22.55	3.62
	62 (16.7)	29.08	2.10	28.10	2.35	26.79	2.62	25.61	2.92	24.40	3.26	22.55	3.62
	67 (19.4)	31.76	2.10	30.31	2.34	28.80	2.62	27.21	2.92	25.50	3.25	23.64	3.62
	72 (22.2)	34.96	2.09	33.40	2.34	31.76	2.61	30.02	2.92	28.16	3.25	26.12	3.61
	77 (25.0)	39.70	2.15	38.57	2.39	37.37	2.67	36.09	2.97	34.71	3.30	33.19	3.67
1125	57 (13.9)	29.73	2.15	28.56	2.39	27.37	2.67	26.09	2.97	24.71	3.30	23.19	3.67
	62 (16.7)	29.73	2.15	28.56	2.39	27.37	2.67	26.09	2.97	24.71	3.30	23.19	3.67
	67 (19.4)	32.21	2.15	30.72	2.39	29.17	2.67	27.53	2.97	25.78	3.30	23.89	3.67
	72 (22.2)	35.45	2.14	33.83	2.39	32.14	2.66	30.35	2.97	28.43	3.30	26.34	3.66
	77 (25.0)	39.73	2.15	38.56	2.39	37.37	2.67	36.09	2.97	34.71	3.30	33.19	3.67

PA13NAZ30-A Outdoor Section With CNPV*3014A** Indoor Section

COOLING INDOOR MODEL	CAPACITY	POWER	FURNACE MODEL	COOLING INDOOR MODEL	CAPACITY	POWER	FURNACE MODEL
CNPV*3017A**	1.00	0.92	PG8*EA048070	CSPH*3012A**	1.00	0.96	PG9MXA036060
CAP**3014A**	1.00	0.96	PG8*EA048070	CSPH*3612A**	1.01	0.92	PG9MXA036060
CAP**3017A**	1.01	0.92	PG8*EA048070	CAP**3017A**	1.00	0.96	PG9MXA048080
CAP**3614A**	1.01	0.96	PG8*EA048090	CAP**3617A**	1.01	0.92	PG9MXA048080
CAP**3617A**	1.01	0.92	PG8*EA048090	CNPV*3017A**	1.00	0.96	PG9MXA048080
CAP**3619A**	1.01	0.96	PG8*EA048090	CNPV*3617A**	1.01	0.92	PG9MXA048080
CNPV*3017A**	1.00	0.92	PG8*EA048090	CNPV*3017A**	1.00	0.96	PG9MXA048080
CNPV*3617A**	1.01	0.92	PG8*EA048090	CSPH*3012A**	1.00	0.96	PG9MXA048080
CNPV*3619A**	1.01	0.96	PG8*EA048090	CAP**3619A**	1.00	0.92	PG9MXA048080
CNPV*3017A**	1.00	0.92	PG8*EA048090	CNPV*3017A**	1.00	0.96	PG9MXA048080
CNPV*3617A**	1.01	0.92	PG8*EA048090	CNPV*3617A**	1.01	0.92	PG9MXA048080
CNPV*3017A**	1.00	0.92	PG9MTAV/36050*A**	CNPV*3017A**	1.00	0.96	PG9MTAV/36050*A**
CNPV*3617A**	1.01	0.92	PG9MTAV/36050*A**	CNPV*3617A**	1.01	0.92	PG9MTAV/36050*A**
CNPV*3017A**	1.00	0.92	PG9MTAV/36075*A**	CNPV*3017A**	1.00	0.96	PG9MTAV/36075*A**
CNPV*3617A**	1.01	0.92	PG9MTAV/36075*A**	CNPV*3617A**	1.01	0.92	PG9MTAV/36075*A**
CNPV*3017A**	1.00	0.92	PG9MTAV/60100*A**	CNPV*3017A**	1.00	0.96	PG9MTAV/60100*A**
CNPV*3617A**	1.01	0.92	PG9MTAV/60100*A**	CNPV*3617A**	1.01	0.92	PG9MTAV/60100*A**
CNPV*3017A**	1.00	0.92	PG9MTAV/60125*A**	CNPV*3017A**	1.00	0.96	PG9MTAV/60125*A**
CNPV*3617A**	1.01	0.92	PG9MTAV/60125*A**	CNPV*3617A**	1.01	0.92	PG9MTAV/60125*A**
CNPV*3017A**	1.00	0.92	PG9MTAV/60150*A**	CNPV*3017A**	1.00	0.96	PG9MTAV/60150*A**
CNPV*3617A**	1.01	0.92	PG9MTAV/60150*A**	CNPV*3617A**	1.01	0.92	PG9MTAV/60150*A**

See notes on pg. 27

COOLING INDOOR MODEL	CAPACITY	POWER	FURNACE MODEL	COOLING INDOOR MODEL	CAPACITY	POWER	FURNACE MODEL
CNPV*3017A**	1.00	1.00	PG9MXA036080	CNPV*3017A**	1.00	0.96	PG9MXA036080
CAP**3014A**	1.00	1.00	PG9MXA036080	CAP**3014A**	1.00	0.92	PG9MXA036080
CAP**3017A**	1.01	1.00	PG9MXA036080	CAP**3017A**	1.01	0.96	PG9MXA036080
CAP**3614A**	1.01	0.96	PG9MXA036080	CAP**3614A**	1.01	0.92	PG9MXA036080
CAP**3617A**	1.01	0.92	PG9MXA036080	CAP**3617A**	1.01	0.96	PG9MXA036080
CAP**3619A**	1.01	0.96	PG9MXA036080	CAP**3619A**	1.01	0.92	PG9MXA036080
CNPV*3017A**	1.00	1.00	PG9MXA036080	CNPV*3017A**	1.00	0.96	PG9MXA036080
CNPV*3617A**	1.01	1.00	PG9MXA036080	CNPV*3617A**	1.01	0.96	PG9MXA036080
CNPV*3017A**	1.00	1.00	PG9MXA036080	CNPV*3017A**	1.00	0.96	PG9MXA036080
CNPV*3617A**	1.01	1.00	PG9MXA036080	CNPV*3617A**	1.01	0.96	PG9MXA036080
CNPV*3017A**	1.00	1.00	PG9MXA036080	CNPV*3017A**	1.00	0.96	PG9MXA036080
CNPV*3617A**	1.01	1.00	PG9MXA036080	CNPV*3617A**	1.01	0.96	PG9MXA036080
CNPV*3017A**	1.00	1.00	PG9MXA036080	CNPV*3017A**	1.00	0.96	PG9MXA036080
CNPV*3617A**	1.01	1.00	PG9MXA036080	CNPV*3617A**	1.01	0.96	PG9MXA036080
CNPV*3017A**	1.00	1.00	PG9MXA036080	CNPV*3017A**	1.00	0.96	PG9MXA036080
CNPV*3617A**	1.01	1.00	PG9MXA036080	CNPV*3617A**	1.01	0.96	PG9MXA036080
CNPV*3017A**	1.00	1.00	PG9MXA036080	CNPV*3017A**	1.00	0.96	PG9MXA036080
CNPV*3617A**	1.01	1.00	PG9MXA036080	CNPV*3617A**	1.01	0.96	PG9MXA036080
CNPV*3017A**	1.00	1.00	PG9MXA036080	CNPV*3017A**	1.00	0.96	PG9MXA036080
CNPV*3617A**	1.01	1.00	PG9MXA036080	CNPV*3617A**	1.01	0.96	PG9MXA036080

DETAILED COOLING CAPACITIES# (CONT.)

EVAPORATOR AIR		CONDENSER ENTERING AIR TEMPERATURES ° F (° C)											
CFM	EWB ° F (° C)	75 (23.9)		85 (29.4)		95 (35)		105 (40.6)		115 (46.1)		125 (51.7)	
		Capacity MBtu/h	Total System KW**	Capacity MBtu/h	Total System KW**	Capacity MBtu/h	Total System KW**	Capacity MBtu/h	Total System KW**	Capacity MBtu/h	Total System KW**	Capacity MBtu/h	Total System KW**
		Total	Sens†	Total	Sens†	Total	Sens†	Total	Sens†	Total	Sens†	Total	Sens†
1050	57 (13.9)	33.02	33.02	31.79	2.71	30.48	30.48	29.07	29.07	27.53	27.53	25.80	25.80
	62 (16.7)	33.84	29.81	32.92	2.71	30.74	28.98	29.10	28.91	27.53	27.53	25.79	25.79
	67 (19.4)	37.03	25.15	35.32	2.41	33.52	23.75	31.60	31.60	29.53	22.21	27.25	21.34
	72 (22.2)	40.62	20.46	38.75	1.97	36.75	19.07	34.63	18.31	32.32	17.51	29.77	16.63
	77 (25.0)	34.36	34.36	33.04	2.77	31.63	31.63	30.11	30.11	28.46	28.46	26.59	26.59
1200	57 (13.9)	34.62	31.95	33.09	2.77	31.63	31.63	30.11	30.11	28.46	28.46	26.59	26.59
	62 (16.7)	37.66	26.72	37.66	2.77	34.00	25.30	32.01	24.54	29.87	29.73	27.51	22.84
	67 (19.4)	41.28	21.43	39.32	2.04	37.24	20.01	35.03	19.24	32.63	18.42	29.99	17.53
	72 (22.2)	35.46	35.46	34.05	2.83	32.56	32.56	30.95	30.95	29.19	29.19	27.21	27.21
	77 (25.0)	35.44	35.44	34.05	2.83	32.56	32.56	30.95	30.95	29.19	29.19	27.21	27.21
1350	57 (13.9)	38.12	28.20	36.28	2.53	34.35	26.77	32.31	25.99	30.11	25.16	27.70	24.23
	62 (16.7)	41.76	22.33	39.73	2.16	37.57	20.89	35.29	20.11	32.83	19.28	30.11	18.37
	67 (19.4)												
	72 (22.2)												
	77 (25.0)												

PA13NAZ36 - A Outdoor Section With CNPV*4221A** Indoor Section

COOLING		CAPACITY		POWER		FURNACE MODEL	
INDOOR MODEL	INDOOR MODEL	Capacity	System KW**	Capacity	System KW**	Capacity	System KW**
CNPV*4221A**	CNPV*4221A**	1.00	1.00	0.99	0.91	PG8*EA048070	PG8*EA048070
CAP**3614A**	CNPV*3617A**	0.98	0.98	0.98	0.93	PG8*EA048070	PG8*EA048070
CAP**3617A**	CNPV*4217A**	0.98	0.98	0.99	0.91	PG8*EA048070	PG8*EA048070
CAP**3619A**	CSPH*3612A**	0.98	0.98	0.98	0.94	PG8*EA048070	PG8*EA048070
CAP**3621A**	CSPH*4212A**	0.98	0.98	1.00	0.92	PG8*EA048070	PG8*EA048070
CAP**4221A**	CAP**3621A**	0.99	0.99	0.98	0.94	PG8*EA048090	PG8*EA048090
CAP**4224A**	CAP**4221A**	0.99	0.99	1.00	0.92	PG8*EA048090	PG8*EA048090
CNPF*3618A**	CNPV*3617A**	0.98	0.98	0.98	0.94	PG8*EA048090	PG8*EA048090
CNPV*3617A**	CNPV*4221A**	0.98	0.98	0.99	0.91	PG8*EA048090	PG8*EA048090
CNPV*4221A**	CNPV*3621A**	0.98	0.98	0.98	0.94	PG8*EA048090	PG8*EA048090
CNPV*3617A**	CNPV*4217A**	0.98	0.98	0.99	0.91	PG8*EA048090	PG8*EA048090
CNPV*3621A**	CSPH*3612A**	1.00	1.00	0.98	0.94	PG8*EA048090	PG8*EA048090
CNPV*4217A**	CSPH*4212A**	0.98	0.98	1.00	0.92	PG8*EA048090	PG8*EA048090
CSPH*3612A**	CAP**3621A**	0.98	0.98	0.98	0.94	PG8*EA060110	PG8*EA060110
CSPH*4212A**	CAP**4221A**	0.98	0.98	1.00	0.92	PG8*EA060110	PG8*EA060110
FF1ENP036	CNPV*3617A**	0.98	0.98	0.98	0.94	PG8*EA060110	PG8*EA060110
PF4MNA036	CNPV*4221A**	0.99	0.99	0.98	0.94	PG8*EA060110	PG8*EA060110
PF4MNA037	CNPV*3621A**	0.98	0.98	1.00	0.92	PG8*EA060110	PG8*EA060110
PF4MNA042	CNPV*4217A**	1.01	1.01	0.98	0.94	PG8*EA060110	PG8*EA060110
PF4MNA043	CNPV*4221A**	1.00	1.00	0.98	0.94	PG8*EA060110	PG8*EA060110
CAP**3617A**	CSPH*3612A**	0.98	0.94	0.98	0.94	PG9MXA036080	PG9MXA036080
CNPV*3617A**	CSPH*4212A**	0.98	0.94	0.98	0.94	PG9MXA036080	PG9MXA036080
CNPV*4217A**	CAP**3619A**	0.98	0.94	0.97	0.97	PG9MTAV36050*A**	PG9MTAV36050*A**
CNPV*4221A**	CNPV*3617A**	1.00	1.00	0.99	0.95	PG9MTAV36050*A**	PG9MTAV36050*A**
CSPH*3612A**	CNPV*4221A**	0.98	0.94	0.98	0.94	PG9MTAV36050*A**	PG9MTAV36050*A**
CAP**3614A**	CSPH*4212A**	0.98	0.94	1.00	0.92	PG9MTAV36075*A**	PG9MTAV36075*A**
CNPV*3617A**	CAP**3619A**	0.98	0.94	0.98	0.94	PG9MTAV36075*A**	PG9MTAV36075*A**
CNPV*4217A**	CNPV*3617A**	1.00	1.00	0.98	0.94	PG9MTAV36075*A**	PG9MTAV36075*A**
CSPH*3612A**	CNPV*4221A**	0.98	0.94	0.98	0.94	PG9MTAV36075*A**	PG9MTAV36075*A**
CAP**3617A**	CSPH*3612A**	0.98	0.94	0.98	0.94	PG9MTAV36075*A**	PG9MTAV36075*A**
CNPV*3617A**	CSPH*4212A**	0.98	0.94	1.00	0.92	PG9MTAV60100*A**	PG9MTAV60100*A**
CNPV*4217A**	CAP**3617A**	0.98	0.94	0.98	0.94	PG9MTAV60100*A**	PG9MTAV60100*A**
CSPH*3612A**	CNPV*3617A**	0.98	0.94	0.98	0.94	PG9MTAV60100*A**	PG9MTAV60100*A**
CAP**3617A**	CNPV*4217A**	0.98	0.94	0.98	0.94	PG9MTAV60100*A**	PG9MTAV60100*A**
CNPV*4217A**	CSPH*4212A**	0.98	0.94	0.98	0.94	PG9MTAV60100*A**	PG9MTAV60100*A**
CSPH*3612A**	CSPH*3612A**	0.98	0.94	0.98	0.94	PG9MTAV60100*A**	PG9MTAV60100*A**
CAP**3617A**	CSPH*4212A**	0.98	0.94	0.98	0.94	PG9MTAV60100*A**	PG9MTAV60100*A**
CNPV*3617A**	CSPH*4212A**	0.98	0.94	0.98	0.94	PG9MTAV60100*A**	PG9MTAV60100*A**

See notes on pg. 27



DETAILED COOLING CAPACITIES# (CONT.)

EVAPORATOR AIR				CONDENSER ENTERING AIR TEMPERATURES ° F (° C)															
CFM	EWB ° F (° C)	75 (23.9)			85 (29.4)			95 (35)			105 (40.6)			115 (46.1)			125 (51.7)		
		Capacity MBtuHt		Total System KW**	Capacity MBtuHt		Total System KW**	Capacity MBtuHt		Total System KW**	Capacity MBtuHt		Total System KW**	Capacity MBtuHt		Total System KW**			
		Total	Sens†	Total	Sens†	Total	Sens†	Total	Sens†	Total	Sens†	Total	Sens†	Total	Sens†	Total	Sens†	Total	
		PA13NAZ48 - B Outdoor Section With CNPV*4821A** Indoor Section																	
	57 (13.9)	45.48	45.48	3.30	43.78	43.78	41.91	41.91	4.22	39.83	39.83	4.75	37.47	37.47	5.32	34.69	34.69	5.94	
1400	62 (16.7)	47.05	42.21	3.30	44.90	41.19	40.09	40.09	4.22	40.09	38.87	4.75	37.46	37.46	5.32	34.69	34.69	5.94	
	67 (19.4)	51.43	35.74	3.28	49.00	34.71	37.72	46.34	33.59	4.20	43.01	40.34	4.73	40.18	31.08	5.30	36.50	29.62	5.91
	72 (22.2)	56.22	29.21	3.26	53.48	28.15	27.01	43.43	4.17	47.15	25.77	4.70	43.46	24.42	5.26	39.30	22.92	5.87	
	77 (23.9)	47.31	47.31	3.37	45.46	45.46	3.81	43.43	4.29	41.16	41.16	4.82	38.60	38.60	5.39	35.57	35.57	6.00	
1600	62 (16.7)	48.09	45.19	3.37	45.86	44.10	43.51	42.87	4.29	41.16	41.16	4.82	38.59	36.59	5.39	35.57	35.57	6.00	
	67 (19.4)	52.38	37.91	3.35	49.81	36.85	37.90	43.93	4.27	43.93	34.46	4.80	40.56	33.13	5.37	36.74	31.63	5.99	
	72 (22.2)	57.20	30.55	3.33	54.31	29.47	29.47	42.22	4.25	47.65	27.02	4.77	43.80	25.64	5.33	0.00	0.00	0.00	
1800	57 (13.9)	48.81	48.81	3.45	48.83	48.83	44.65	44.65	4.36	42.22	42.22	4.89	39.46	39.46	5.46	36.22	36.22	6.07	
	62 (16.7)	48.99	47.90	3.45	46.80	46.80	44.65	44.65	4.36	42.22	42.22	4.89	39.46	39.46	5.46	36.22	36.22	6.07	
	67 (19.4)	53.06	39.96	3.43	50.38	38.87	37.70	47.46	4.35	44.30	36.46	4.88	40.81	35.08	5.45	36.88	33.52	6.06	
	72 (22.2)	57.90	31.80	3.41	54.89	30.70	29.49	47.98	4.32	47.98	28.21	4.84	43.99	26.80	5.41	40.78	25.68	6.05	

COOLING INDOOR MODEL	CAPACITY	POWER	FURNACE MODEL
CNPV*4821A**	1.00	1.00	PG8*EA060110
CAP**4817A**	0.99	0.99	PG8*EA060110
CAP**4821A**	1.00	1.00	PG8*EA060110
CAP**4823A**	1.00	1.00	PG8*EA060110
CAP**4824A**	1.00	1.00	PG8*EA060110
CAP**6021A**	1.01	1.01	PG8*EA060110
CAP**6025A**	1.01	1.01	PG8*EA060110
CNPV*4818A**	0.98	0.98	PG8*EA060135
CNPV*4821A**	1.00	1.00	PG8*EA060135
CNPV*6024A**	1.01	1.01	PG8*EA060135
CNPV*6124A**	1.01	1.01	PG8*EA060135
CSPH*4812A**	1.00	1.00	PG8*EA060135
CSPH*4812A**	1.01	1.01	PG8*EA060135
PF4MNA049	1.01	0.93	PG8*EA060135
PF4MNA060	1.01	1.01	PG8*EA060135
PF4MNA061	1.02	0.94	PG8*EA060135
CAP**4817A**	0.99	0.99	PG8*EA048070
CNPV*4821A**	0.99	0.99	PG8*EA048070
CNPV*6024A**	1.00	1.00	PG8*EA048070
CNPV*6124A**	1.00	1.00	PG8*EA048070
CSPH*4812A**	0.99	0.99	PG8*EA048070
CAP**4821A**	0.99	0.95	PG8*EA048090
CAP**4823A**	0.99	0.95	PG8*EA048090
CAP**6021A**	1.00	0.92	PG8*EA048090
CNPV*4821A**	0.99	0.95	PG8*EA048090
CNPV*6024A**	1.00	0.92	PG8*EA048090
CNPV*6124A**	1.00	0.92	PG8*EA048090
CSPH*4812A**	0.99	0.95	PG8*EA048090
CSPH*6012A**	1.00	0.96	PG8*EA048090
CAP**4817A**	0.99	0.95	PG8*EA060110

COOLING INDOOR MODEL	CAPACITY	POWER	FURNACE MODEL
CNPV*4821A**	0.99	0.95	PG8*EA060110
CAP**6021A**	1.00	0.92	PG8*EA060110
CNPV*4821A**	0.99	0.95	PG8*EA060110
CNPV*6024A**	1.00	0.92	PG8*EA060110
CNPV*6124A**	1.00	0.92	PG8*EA060110
CNPV*4821A**	0.99	0.95	PG8*EA060110
CSPH*4812A**	0.99	0.95	PG8*EA060110
CSPH*6012A**	1.00	0.96	PG8*EA060110
CAP**4824A**	0.99	0.95	PG8*EA060135
CAP**6024A**	1.00	0.92	PG8*EA060135
CNPV*6025A**	1.00	0.92	PG8*EA060135
CNPV*6124A**	1.01	0.93	PG8*EA060135
CSPH*4812A**	0.99	0.95	PG8*EA060135
CSPH*6012A**	1.00	0.92	PG8*EA060135
CAP**4823A**	0.99	0.99	PG9MTAV60100*A**
CNPV*4821A**	0.99	0.95	PG9MTAV60100*A**
CNPV*6024A**	1.00	0.96	PG9MTAV60100*A**
CNPV*6124A**	1.00	0.96	PG9MTAV60100*A**
CNPV*6124A**	1.00	0.96	PG9MTAV60100*A**
CSPH*4812A**	0.99	0.95	PG9MTAV60100*A**
CSPH*6012A**	1.00	0.92	PG9MTAV60125*A**
CAP**6025A**	1.00	0.92	PG9MTAV60125*A**
CNPV*4821A**	0.99	0.95	PG9MTAV60125*A**
CNPV*6124A**	1.00	0.96	PG9MTAV60125*A**
CSPH*4812A**	0.99	0.96	PG9MTAV60125*A**
CSPH*6012A**	1.00	0.92	PG9MTAV60125*A**
CAP**4817A**	0.99	0.95	PG9MXA048080

COOLING INDOOR MODEL	CAPACITY	POWER	FURNACE MODEL
CNPV*4821A**	0.99	0.95	PG9MXA048080
CNPV*6024A**	1.00	0.92	PG9MXA048080
CNPV*6124A**	1.00	0.92	PG9MXA048080
CSPH*4812A**	0.99	0.95	PG9MXA048080
CSPH*6012A**	1.00	0.92	PG9MXA048080
CAP**4821A**	0.99	0.95	PG9MXA060100
CAP**4823A**	0.99	0.95	PG9MXA060100
CAP**6021A**	1.00	0.92	PG9MXA060100
CNPV*4821A**	0.99	0.95	PG9MXA060100
CNPV*6024A**	1.00	0.92	PG9MXA060100
CNPV*6124A**	1.00	0.92	PG9MXA060100
CNPV*4821A**	0.99	0.95	PG9MXA060100
CSPH*4812A**	0.99	0.95	PG9MXA060100
CSPH*6012A**	1.00	0.92	PG9MXA060100
CAP**4824A**	0.99	0.95	PG9MXA060120
CAP**6025A**	1.00	0.92	PG9MXA060120
CNPV*4821A**	0.99	0.95	PG9MXA060120
CNPV*6024A**	1.00	0.92	PG9MXA060120
CNPV*6124A**	1.00	0.92	PG9MXA060120
CNPV*4824A**	0.99	0.91	PG9MXA060120
CNPV*6024A**	1.00	0.92	PG9MXA060120
CNPV*6124A**	1.01	0.93	PG9MXA060120
CSPH*4812A**	0.99	0.95	PG9MXA060120
CSPH*6012A**	1.00	0.92	PG9MXA060120

See notes on pg. 27

DETAILED COOLING CAPACITIES# (CONT.)

EVAPORATOR AIR		CONDENSER ENTERING AIR TEMPERATURES ° F (° C)											
CFM	EWB ° F (° C)	75 (23.9)		85 (29.4)		95 (35)		105 (40.6)		115 (46.1)		125 (51.7)	
		Capacity MBtuHt	Total System KW**	Capacity MBtuHt	Total System KW**	Capacity MBtuHt	Total System KW**	Capacity MBtuHt	Total System KW**	Capacity MBtuHt	Total System KW**	Capacity MBtuHt	Total System KW**
		Total	Sens†	Total	Sens†	Total	Sens†	Total	Sens†	Total	Sens†	Total	Sens†
PA13NAZ60-B Outdoor Section With CNPV*6024A** Indoor Section													
57 (13.9)	56.45	54.15	54.15	51.63	51.63	48.85	48.85	45.74	45.74	42.13	42.13	38.59	38.59
1750	62 (16.7)	58.06	52.08	50.73	49.27	48.92	48.50	45.74	45.74	42.13	42.13	38.59	38.59
	67 (19.4)	63.19	43.87	42.51	41.05	39.52	39.52	37.88	37.88	36.24	36.24	34.60	34.60
	72 (22.2)	68.72	35.56	34.17	32.66	31.09	31.09	29.47	29.47	27.87	27.87	26.24	26.24
2000	57 (13.9)	58.64	58.64	4.20	56.12	4.66	53.36	5.17	50.32	5.72	46.93	6.33	43.00
	62 (16.7)	59.29	55.79	4.20	56.34	4.66	53.36	5.17	50.32	5.72	46.93	6.33	43.00
	67 (19.4)	64.21	46.59	4.22	60.74	4.68	57.00	4.70	53.01	5.18	48.70	5.73	43.93
	72 (22.2)	69.74	37.22	4.24	65.83	4.24	61.57	34.25	57.10	32.67	31.06	6.34	0.00
2250	57 (13.9)	60.40	60.40	4.30	57.70	4.76	54.72	54.72	51.46	51.46	47.82	6.43	43.65
	62 (16.7)	60.35	60.35	4.30	57.69	4.76	54.72	54.72	51.46	51.46	47.82	6.43	43.64
	67 (19.4)	64.93	49.17	4.32	61.34	4.78	57.46	46.24	53.34	44.63	42.88	6.43	44.06
	72 (22.2)	70.46	38.78	4.35	66.39	37.32	61.97	35.76	57.43	34.18	32.78	6.46	48.03

COOLING INDOOR MODEL	CAPACITY	POWER	FURNACE MODEL	COOLING INDOOR MODEL	CAPACITY	POWER	FURNACE MODEL	COOLING INDOOR MODEL	CAPACITY	POWER	FURNACE MODEL	COOLING INDOOR MODEL	CAPACITY	POWER	FURNACE MODEL
CAP**6021A**	0.99	0.99		CAP**6021A**	0.98	0.98	PG8*EA060110	CAP**6025A**	0.98	0.98	PG8*EA060135	CSPH*6012A**	0.98	0.98	PG9MXA048080
CAP**6024A**	1.00	1.00		CNPH*6024A**	0.98	0.98	PG8*EA060110	CAP**6021A**	0.98	0.98	PG8*EA060110	CAP**6021A**	0.98	0.98	PG9MXA060100
CAP**6025A**	1.00	1.00		CNPH*6124A**	0.98	0.98	PG8*EA060110	CNPH*6124A**	0.98	0.98	PG8*EA060110	CNPH*6024A**	0.98	0.98	PG9MXA060100
CNPH*6024A**	1.00	1.00		CSPH*6012A**	0.98	0.98	PG8*EA060110	CSPH*6012A**	0.98	0.98	PG8*EA060110	CNPH*6124A**	0.98	0.98	PG9MXA060100
CNPH*6124A**	1.00	1.00		CAP**6024A**	0.98	0.98	PG8*EA060135	CAP**6025A**	0.98	0.98	PG8*EA060135	CAP**6012A**	0.98	0.98	PG9MXA060120
CNPH*6124A**	1.00	1.00		CAP**6025A**	0.98	0.98	PG8*EA060135	CAP**6024A**	0.98	0.98	PG8*EA060135	CAP**6025A**	0.98	0.98	PG9MXA060120
CSPH*6012A**	1.00	1.00		CNPH*6024A**	0.98	0.98	PG8*EA060135	CNPH*6024A**	0.98	0.98	PG8*EA060135	CNPH*6024A**	0.98	0.98	PG9MXA060120
PF4MNA060	1.01	1.01		CNPH*6124A**	0.98	0.98	PG8*EA060135	CNPH*6124A**	0.98	0.98	PG8*EA060135	CNPH*6124A**	0.98	0.98	PG9MXA060120
PF4MNA061	1.01	1.01		CNPV*6124A**	0.98	0.98	PG8*EA060135	CNPV*6124A**	0.98	0.98	PG8*EA060135	CNPV*6124A**	0.98	0.98	PG9MXA060120
CAP**6021A**	0.98	0.98	PG8*EA048090	CSPH*6012A**	0.98	0.98	PG8*EA060135	CSPH*6012A**	0.98	0.98	PG8*EA060135	CNPV*6124A**	0.98	0.98	PG9MXA060120
CNPH*6024A**	0.98	0.98	PG8*EA048090	CNPH*6124A**	0.98	0.98	PG8*EA060135	CNPH*6124A**	0.98	0.98	PG8*EA060135	CSPH*6124A**	0.98	0.98	PG9MXA060120
CNPH*6124A**	0.98	0.98	PG8*EA048090	CNPH*6024A**	0.98	0.98	PG9MXA048080	CNPH*6024A**	0.98	0.98	PG9MXA048080	CSPH*6124A**	0.98	0.98	PG9MXA060120

NOTE: When the required data fall between the published data, interpolation may be performed. Extrapolation is not an acceptable practice.
 # Detailed Cooling Capacities are based on indoor and outdoor unit at the same elevation per the latest edition of ARI standard 210/240. If additional tubing length and/or indoor unit is located above outdoor unit, a slight variation in capacity may occur.

* Tested Combination

† Total and sensible capacities are net capacities. Blower motor heat has been subtracted.

‡ Sensible capacities shown are based on 80° F (27° C) entering air at the indoor coil. For sensible capacities at other than 80° F (27° C) deduct 835 BtuH (245 kW) per 1000 CFM (480 L/S) of indoor coil air for each degree below 80° F (27° C), or add 835 BtuH (245 kW) per 1000 CFM (480 L/S) of indoor coil air per degree above 80° F (27° C).

When the required data fall between the published data, interpolation may be performed.

** Total system kW is total of indoor and outdoor unit kilowatts.



GUIDE SPECIFICATIONS

GENERAL

System Description

Outdoor-mounted, air-cooled, split-system air conditioner unit suitable for ground or rooftop installation. Unit consists of a hermetic compressor, an air-cooled coil, propeller-type condenser fan, and a control box. Unit will discharge supply air horizontally as shown on contract drawings. Unit will be used in a refrigeration circuit to match up to a packaged fan coil or coil unit.

Quality Assurance

- Unit will be rated in accordance with the latest edition of ARI Standard 210.
- Unit will be certified for capacity and efficiency, and listed in the latest ARI directory.
- Unit construction will comply with latest edition of ANSI/ASHRAE and with NEC.
- Unit will be constructed in accordance with UL standards and will carry the UL label of approval. Unit will have c-UL approval.
- Unit cabinet will be capable of withstanding Federal Test Method Standard No. 141 (Method 6061) 500-hr salt spray test.
- Air-cooled condenser coils will be leak tested and pressure tested
- Unit constructed in ISO9001 approved facility.

Delivery, Storage, and Handling

- Unit will be shipped as single package only and is stored and handled per unit manufacturer's recommendations.

Warranty (for inclusion by specifying engineer)

- U.S. and Canada only.

PRODUCTS

Equipment

- Factory assembled, single piece, air-cooled air conditioner unit. Contained within the unit enclosure is all factory wiring, piping, controls, compressor, refrigerant charge (R-410A), and special features required prior to field start-up.

Unit Cabinet

- Unit cabinet will be constructed of galvanized steel, bonderized, and coated with a powder coat paint.

Fans

- Condenser fan will be direct-drive propeller type, discharging air horizontally.

AIR-COOLED, SPLIT-SYSTEM AIR CONDITIONER

PA13NAZ

1-1/2 TO 5 NOMINAL TONS

- Condenser fan motors will be totally enclosed, 1-phase type with class B insulation and permanently lubricated bearings. Shafts will be corrosion resistant.
- Fan blades will be statically and dynamically balanced.
- Condenser fan openings will be equipped with coated steel wire safety guards.

Compressor

- Compressor will be hermetically sealed.
- Compressor will be mounted on rubber vibration isolators.

Condenser Coil

- Condenser coil will be air cooled.
- Coil will be constructed of aluminum fins mechanically bonded to copper tubes which are then cleaned, dehydrated, and sealed.

Refrigeration Components

- Refrigeration circuit components will include liquid-line front-seating shutoff valve with sweat connections, vapor-line front-seating shutoff valve with sweat connections, system charge of R-410A refrigerant, and compressor oil.
- Unit will be equipped with high-pressure switch, low pressure switch and filter drier for R-410A refrigerant.

Operating Characteristics

- The capacity of the unit will meet or exceed _____ Btuh at a suction temperature of _____ °F/°C. The power consumption at full load will not exceed _____ kW.
- Combination of the unit and the evaporator or fan coil unit will have a total net cooling capacity of _____ Btuh or greater at conditions of _____ CFM entering air temperature at the evaporator at _____ °F/°C wet bulb and _____ °F/°C dry bulb, and air entering the unit at _____ °F/°C.
- The system will have a SEER of _____ Btuh/watt or greater at DOE conditions.

Electrical Requirements

- Nominal unit electrical characteristics will be _____ v, single phase, 60 hz. The unit will be capable of satisfactory operation within voltage limits of _____ v to _____ v.
- Nominal unit electrical characteristics will be _____ v, three phase, 60 hz. The unit will be capable of satisfactory operation within voltage limits of _____ v to _____ v.
- Unit electrical power will be single point connection.
- Control circuit will be 24v.

Special Features

- Refer to section of this literature identifying accessories and descriptions for specific features and available enhancements.

SYSTEM DESIGN SUMMARY

1. Intended for outdoor installation with free air inlet and outlet. Outdoor fan external static pressure available is less than 0.01-in. wc.
2. Minimum outdoor operating air temperature without low-ambient operation accessory is 55°F (12.8°C).
3. Maximum outdoor operating air temperature is 125°F (51.7°C).
4. For reliable operation, unit should be level in all horizontal planes.
5. For interconnecting refrigerant tube lengths greater than 80 ft (23.4 m) and/or 35 ft (10.7 m) vertical differential, consult Residential Piping and Longline Guideline and Service Manual available from equipment distributor.
6. If any refrigerant tubing is buried, provide a 6 in. (152.4 mm) vertical rise to the valve connections at the unit. Refrigerant tubing lengths up to 36 in. (914.4 mm) may be buried without further consideration. Do not bury refrigerant lines longer than 36 in. (914.4 mm).
7. Use only copper wire for electric connection at unit. Aluminum and clad aluminum are not acceptable for the type of connector provided.
8. Do not apply capillary tube indoor coils to these units.
9. Factory-supplied filter drier must be installed.

