

**582J  
SINGLE PACKAGE ROOFTOP, 14 SEER  
GAS HEATING/ELECTRIC COOLING UNIT  
SIZES 04 - 06 with PURON® (R-410A) REFRIGERANT**



## Submittal Data



**Certified to  
ISO 9001**



Use of the AHRI Certified TM Mark indicates a manufacturer's participation in the program. For verification of certification for individual products, go to [www.ahridirectory.org](http://www.ahridirectory.org).



### DESCRIPTION

582J units are single-packaged electric cooling, gas heating units that are pre-wired and pre-charged with Puron® (R-410A) HFC refrigerant. The units are factory tested in both heating and cooling modes.

### STANDARD FEATURES

#### Base Unit

- Puron (R-410A) HFC refrigerant
- SEER's up to 14.1
- EER's up to 12.0
- Meets and exceeds ASHRAE 90.1 energy efficiency levels
- Rated in accordance with AHRI Standards 210/240
- Designed in accordance with Underwriters' Laboratories Std 1995
- Listed by UL & CUL-Canada
- Single-stage cooling capacity control
- Non-corrosive composite sloping design; side or center drain condensate pan. Meets ASHRAE Standard 62
- Standard cooling operating range from 40°F up to 115°F (4°C up to 46°C). Field installable accessory extends the minimum down to -20°F (-29°C)
- Field convertible from vertical to horizontal airflow for slab mounting — No special kits required
- Two-inch disposable return air filters
- Thru-the-bottom power and gas entry capability
- Single point gas and electric connections
- 24-volt control circuit protected with resettable circuit breaker
- Direct Drive - ECM Indoor fan motor is standard with optional belt drive systems
- Totally enclosed condenser motors with permanently lubricated bearings

- Low-pressure and high-pressure switches
- Full perimeter base rail with built-in rigging adapters and fork truck slots
- Central Terminal Board facilitating simple safety circuit troubleshooting and simplified control box arrangement

#### Cabinet

- Access panels with easy grip handles
- Innovative, easy starting, no-strip screw feature on unit access panels
- Pre-painted exterior panels and primer-coated interior panels tested to 500 hours salt spray protection
- Fully insulated cabinet
- Tool-less filter access door

#### Refrigerant System

- Acutrol™ refrigerant metering system
- Liquid line filter drier
- Scroll compressors with internal line-break overload protection
- Copper tube, aluminum fin coils with optional corrosion resistant coils. Corrosion resistant coils are not available for single phase (-J voltage) models.
- Removable gauge line plugs for reading refrigerant pressure with unit panels in place

## STANDARD FEATURES (cont.)

### Gas Heat

- IGC solid-state gas heat exchanger control for on-board diagnostics, anti-cycle protection, LED error code designation, burner control logic and energy saving indoor fan motor delay
- Dedicated 3-5 ton “Low NOx” models available that meet California Air Quality Management NOx requirement of 40 nanograms/joule or less. Low NOx models include stainless steel heat exchangers
- Gas efficiencies up to 82%
- Inducted draft combustion
- Redundant gas valve, with 2 states of heating
- Flame roll-out safety protector
- Solid-state electronic direct spark ignition system

### Standard Parts Warranty

- 15-year gas heat exchanger parts - Stainless Steel
- 10-year gas heat exchanger parts - Aluminized
- 5-year compressor parts
- 1-year parts

## PERFORMANCE DATA

Unit Operating Weight \_\_\_\_\_ lb

Curb Weight \_\_\_\_\_ lb

### Cooling

Gross Total Capacity: \_\_\_\_\_ Btuh

at Condenser Air Temperature \_\_\_\_\_ °F

Gross Sensible Capacity: \_\_\_\_\_ Btuh

Compressor Power Input: \_\_\_\_\_ kW

Indoor Entering db \_\_\_\_\_ °F wb \_\_\_\_\_ °F

Airflow \_\_\_\_\_ CFM External Static Pressure \_\_\_\_\_ in.wg

Indoor Fan Motor Size \_\_\_\_\_ Hp

Exhaust Fan Motor Size \_\_\_\_\_ Hp

### Heating

Heating Capacity:

Stage 1 \_\_\_\_\_ Btuh

Stage 2 \_\_\_\_\_ Btuh

Heating Capacity Total \_\_\_\_\_ Btuh

Stage 1 \_\_\_\_\_ kW

Stage 2 \_\_\_\_\_ kW

Heating Capacity Total \_\_\_\_\_ kW

## ELECTRICAL DATA

Power Supply to Unit \_\_\_\_\_ Volts \_\_\_\_\_ Phase \_\_\_\_\_ Hz

Minimum Circuit Amps \_\_\_\_\_ Maximum Overcurrent Protection \_\_\_\_\_

## SUBMITTAL DATA

Job Name \_\_\_\_\_

Architect \_\_\_\_\_

Engineer \_\_\_\_\_

Contractor \_\_\_\_\_

Unit Designation \_\_\_\_\_

## FACTORY-INSTALLED OPTIONS (FIOPs)

**Economizer with DRY BULB sensing and barometric relief\***

Standard Air Leak Dampers —

- Models with W7212 controller provides standard non-diagnostic control. EconoMi\$er IV.
- Models with W7220 controller meets California Title 24 (section 120.2) Fault Detection and Diagnostic (FDD) requirements. EconoMi\$er X.
- Models with RTU Open controller meets California Title 24 (section 120.2) Fault Detection and Diagnostic (FDD) requirements. EconoMi\$er 2.

**Economizer with ENTHALPY sensing and barometric relief\***

Standard Air Leak Dampers —

- Models with W7212 controller provides standard non-diagnostic control. EconoMi\$er IV.
- Models with W7220 controller meets California Title 24 (section 120.2) Fault Detection and Diagnostic (FDD) requirements. EconoMi\$er X.
- Models with RTU Open controller meets California Title 24 (section 120.2) Fault Detection and Diagnostic (FDD) requirements. EconoMi\$er 2.

**Economizer with DRY BULB sensing and barometric relief\***

ULTRA LOW LEAK Air Dampers —

- Models with W7220 controller meets California Title 24 (section 120.2) Fault Detection and Diagnostic (FDD) requirements, has return, outside air and relief damper leakage that meets Title 24 (section 140.4 and ASHRAE 90.1) requirements - plus 5 year limited parts warranty. EconoMi\$er X.
- Models with RTU Open controller meets California Title 24 (section 120.2) Fault Detection and Diagnostic (FDD) requirements, has return, outside air and relief damper leakage that meets Title 24 (section 140.4 and ASHRAE 90.1) requirements - plus 5 year limited parts warranty. EconoMi\$er 2.

**Economizer with ENTHALPY sensing and barometric relief\***

ULTRA LOW LEAK Air Dampers —

- Models with W7220 controller meets California Title 24 (section 120.2) Fault Detection and Diagnostic (FDD) requirements, has return, outside air and relief damper leakage that meets Title 24 (section 140.4 and ASHRAE 90.1) requirements - plus 5 year limited parts warranty. EconoMi\$er X.
- Models with RTU Open controller meets California Title 24 (section 120.2) Fault Detection and Diagnostic (FDD) requirements, has return, outside air and relief damper leakage that meets Title 24 (section 140.4 and ASHRAE 90.1) requirements - plus 5 year limited parts warranty. EconoMi\$er 2.

RTU Open multi-protocol controller communicates to LON, MODBUS, BACNET and Johnson N2 protocols.

Through the base connectors for gas and electric conduit/piping

Stainless steel gas heat exchanger (includes tubes, vestibule plate and collector box)

Perfect Humidity™ dehumidification system\* (this option also includes Motormaster I controls)

2 position motorized outdoor air damper\*

Non-fused disconnect

Powered 115-volt convenience outlet\*

Non-powered 115-volt convenience outlet

High static evaporator fan motor

Return Air smoke detector

Supply Air smoke detector

CO<sub>2</sub> sensor

Condenser hail guard - louvered style\*

Special coating protection for evaporator and condenser coils\*

\* Not available for single phase (-J voltage) models.

### OPTIONAL WARRANTIES

Complete Unit Parts only up to 5 years

Complete Unit Parts and Labor up to 5 years

Many other optional warranties are available.

See the *Commercial Start-Up and Optional Extended Warranty Price* price pages for further information.

## FIELD INSTALLED ACCESSORIES

### Economizer with DRY BULB sensing and barometric relief

Standard Air Leak Dampers —

- Models with W7212 controller provides standard non-diagnostic control. EconoMi\$er IV.
- Models with W7220 controller meets California Title 24 (section 120.2) Fault Detection and Diagnostic (FDD) requirements. EconoMi\$er X.
- Models with RTU Open controller meets California Title 24 (section 120.2) Fault Detection and Diagnostic (FDD) requirements. EconoMi\$er 2.

### Economizer with ENTHALPY sensing and barometric relief

Standard Air Leak Dampers —

- Models with W7212 controller provides standard non-diagnostic control. EconoMi\$er IV.
- Models with W7220 controller meets California Title 24 (section 120.2) Fault Detection and Diagnostic (FDD) requirements. EconoMi\$er X.
- Models with RTU Open controller meets California Title 24 (section 120.2) Fault Detection and Diagnostic (FDD) requirements. EconoMi\$er 2.

### Economizer with DRY BULB sensing and barometric relief

ULTRA LOW LEAK Air Dampers —

- Models with W7220 controller meets California Title 24 (section 120.2) Fault Detection and Diagnostic (FDD) requirements, has return, outside air and relief damper leakage that meets Title 24 (section 140.4 and ASHRAE 90.1) requirements. EconoMi\$er X.
- Models with RTU Open controller meets California Title 24 (section 120.2) Fault Detection and Diagnostic (FDD) requirements, has return, outside air and relief damper leakage that meets Title 24 (section 140.4 and ASHRAE 90.1) requirements. EconoMi\$er 2.

### Economizer with ENTHALPY sensing and barometric relief

ULTRA LOW LEAK Air Dampers —

- Models with W7220 controller meets California Title 24 (section 120.2) Fault Detection and Diagnostic (FDD) requirements, has return, outside air and relief damper leakage that meets Title 24 (section 140.4 and ASHRAE 90.1) requirements. EconoMi\$er X.
- Models with RTU Open controller meets California Title 24 (section 120.2) Fault Detection and Diagnostic (FDD) requirements, has return, outside air and relief damper leakage that meets Title 24 (section 140.4 and ASHRAE 90.1) requirements. EconoMi\$er 2.

- Power exhaust - prop fan design
- Two-position motorized outdoor air damper
- Manual outside air damper 25%
- Manual outside air damper 50%
- Roofcurb - 14 inch (356mm) tall
- Roofcurb - 24 inch (610mm) tall
- Thru-the-bottom connections—electrical only
- Thru-the-bottom connections—electrical and gas
- Condenser hail guard - louvered style
- Flue shield
- Flue discharge deflector
- Liquid propane (LP) conversion kit
- High altitude conversion kit
- Phase monitor (loss of phase/phase reversal)
- Winter start kit, down to 25°F (-4°C)
- Fan/Filter status switch
- Low ambient head pressure controller, down to 0°F (-18°C)
- Low ambient head pressure controller, down to -20°F (-29°C)
- Time Guard II compressor anti-cycle protection
- Thermostats and Sensors

### Economizer Sensors

- Single Dry bulb control
- Differential Dry bulb control
- Single enthalpy control
- Differential enthalpy control
- CO<sub>2</sub> - wall mounted
- CO<sub>2</sub> - duct mounted
- CO<sub>2</sub> - unit mounted

# CERTIFIED DIMENSION 582J\*04-06

UNIT	J	K	L	M	N	O	P	Q	R	S	T	U	V	W	X	Y	Z
582J 04	33-3/8 [847]	14-7/8 [371]	14-7/8 [371]	14-7/8 [371]	14-7/8 [371]	14-7/8 [371]	14-7/8 [371]	14-7/8 [371]	14-7/8 [371]	14-7/8 [371]	14-7/8 [371]	14-7/8 [371]	14-7/8 [371]	14-7/8 [371]	14-7/8 [371]	14-7/8 [371]	14-7/8 [371]
582J 05	33-3/8 [847]	14-7/8 [371]	14-7/8 [371]	14-7/8 [371]	14-7/8 [371]	14-7/8 [371]	14-7/8 [371]	14-7/8 [371]	14-7/8 [371]	14-7/8 [371]	14-7/8 [371]	14-7/8 [371]	14-7/8 [371]	14-7/8 [371]	14-7/8 [371]	14-7/8 [371]	14-7/8 [371]
582J 06	41-3/8 [1051]	14-7/8 [371]	14-7/8 [371]	14-7/8 [371]	14-7/8 [371]	14-7/8 [371]	14-7/8 [371]	14-7/8 [371]	14-7/8 [371]	14-7/8 [371]	14-7/8 [371]	14-7/8 [371]	14-7/8 [371]	14-7/8 [371]	14-7/8 [371]	14-7/8 [371]	14-7/8 [371]

- NOTES:
1. DIMENSIONS ARE IN INCHES, DIMENSIONS IN MILLIMETERS.
  2. CENTER OF GRAVITY
  3. DIRECTION OF AIR FLOW

UNITED TECHNOLOGIES SYRACUSE, NY  
CARRIER

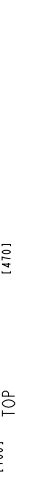
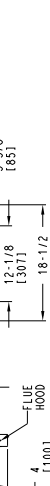
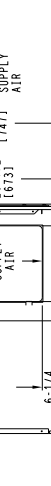
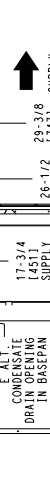
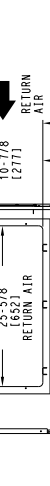
P.O. BOX 4888  
THIS DOCUMENT IS THE PROPERTY OF CARRIER CORPORATION  
CONSENTS WILL NOT BE DISCLOSED OR USED WITHOUT CARRIER CORPORATION'S WRITTEN CONSENT.

THIS DOCUMENT IS THE PROPERTY OF CARRIER CORPORATION  
CONSENTS WILL NOT BE DISCLOSED OR USED WITHOUT CARRIER CORPORATION'S WRITTEN CONSENT.

CONNECTION SIZES	
A	1 3/8" [35] DIA. FIELD POWER SUPPLY HOLE
B	2" [50] DIA. POWER SUPPLY KNOCKOUT
C	1 3/4" [51] DIA. GAUGE ACCESS PLUG
D	7/8" [22] DIA. FIELD CONTROL WIRING HOLE
E	3/4"-14 NPT CONDENSATE DRAIN
F	1/2"-14 NPT GAS CONNECTION
G	2 1/2" [64] DIA. POWER SUPPLY KNOCK-OUT

THRU-THE-BASE CHART THESE HOLES REQUIRED FOR USE CRIMP/PRO01A01, 003A01	WIRE USE SIZES (MAX.)	REQ'D HOLE SIZES (MAX.)
W	1/2"	7/8" [22.2]
X	3/4" [0.03]	1 1/8" [28.2]
Y	3/4" [0.03]	POWER 1 1/8" [28.2]
Z**	(0.03) 1/2" PFI GAS	3/16" [30.0]

SELECT EITHER 3/4" OR 1/2" FOR POWER, DEPENDING ON WIRE SIZE (001) PROVIDES 3/4" FPT THRU CURB FLANGE & FITTING.



582J 04-06 SINGLE ZONE ELECTRICAL COOLING WITH GAS HEAT

48XC000284

REV -

582J

C14270

1 OF 2

DATE 09-16-14

SUPERCEDES

# CERTIFIED DIMENSION 582J\*04-06

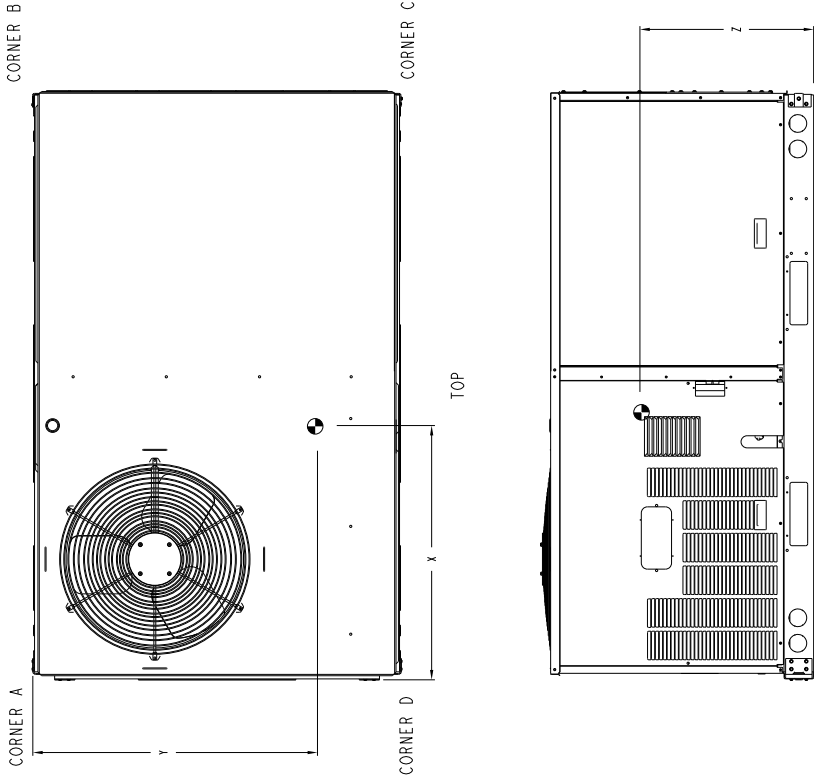

 UNITED TECHNOLOGIES CARRIER  
 P.O. Box 4888  
 NEW YORK, NY 10163-0888  
 132X1

THIS DOCUMENT IS THE PROPERTY OF CARRIER CORPORATION. IT IS TO BE USED ONLY FOR THE PROJECT AND CARRIER'S CONTENTS WILL NOT BE DISCLOSED OR USED WITHOUT CARRIER CORPORATION'S WRITTEN CONSENT.

SUBMISSION OF THESE DRAWINGS OR DOCUMENTS DOES NOT CONSTITUTE AN ACCEPTANCE OF CONTRACT.

UNIT	CORNER WEIGHT (A)		CORNER WEIGHT (B)		CORNER WEIGHT (C)		CORNER WEIGHT (D)		C.G.			HEIGHT							
	LBS.	KG.	LBS.	KG.	LBS.	KG.	LBS.	KG.	X	Y	Z	Y	Z						
582J 04	490	222	120	54	111	50	125	56	61	35	3/4	[908]	24	3/4	[828]	18	7/8	[479]	
582J 05	544	246	130	58	126	57	142	64	66	36	3/4	[933]	24	3/4	[828]	18	7/8	[479]	
582J 06	597	270	141	64	156	70	158	71	142	64	39	1/8	[993]	23	1/2	[597]	20	1/8	[511]

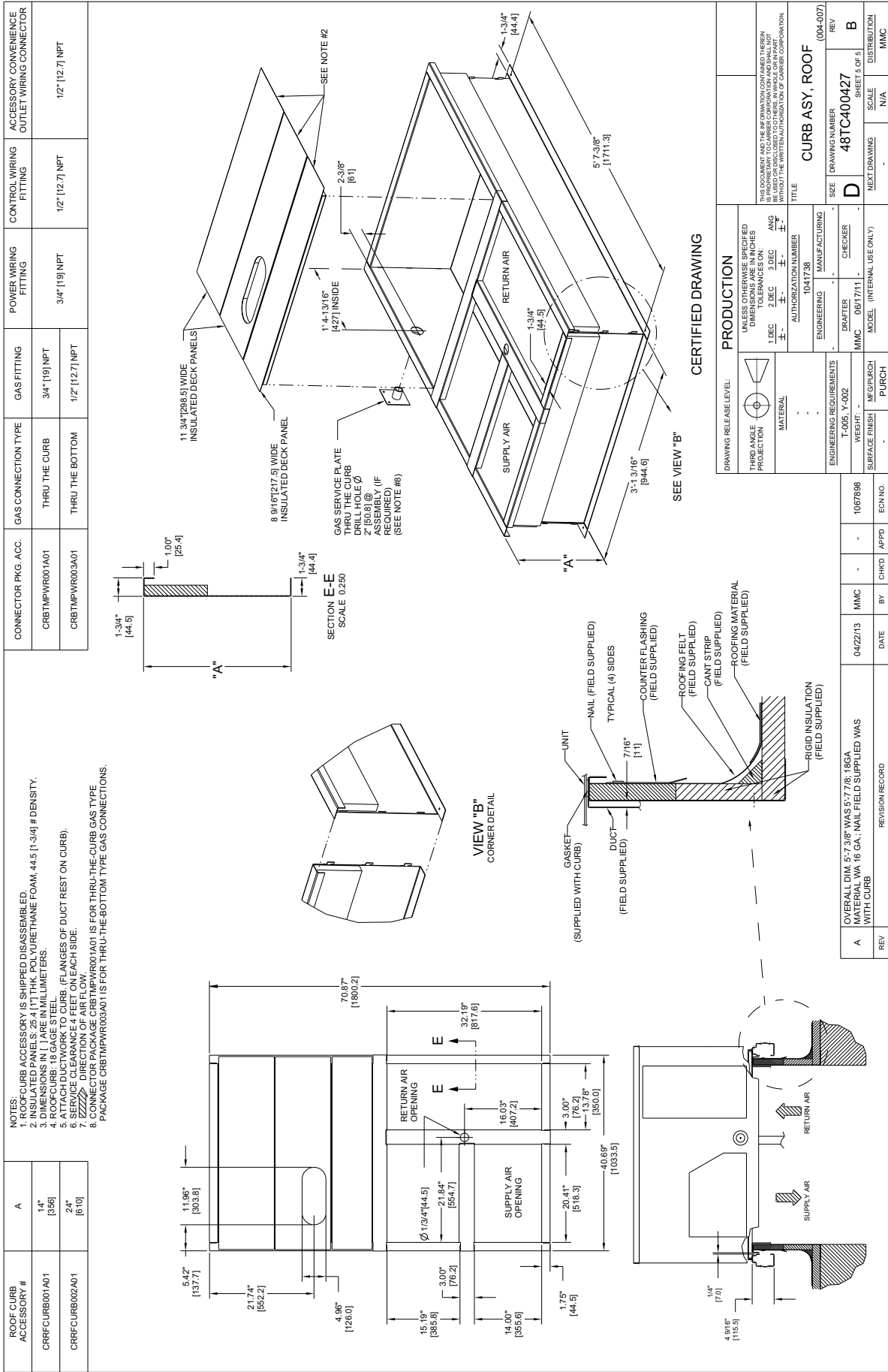
\* STANDARD UNIT WEIGHT IS WITH LOW GAS HEAT AND WITHOUT PACKAGING.  
 FOR OTHER OPTIONS AND ACCESSORIES, REFER TO THE PRODUCT DATA CATALOG.



FRONT

SHEET	DATE	SUPERSEDES	582J 04-06 SINGLE ZONE ELECTRICAL	48KC000284	REV
2 OF 2	09-16-14	-	COOLING WITH GAS HEAT		-

# ROOF CURB DETAILS



CONNECTOR PKG. ACC.	GAS CONNECTION TYPE	GAS FITTING	POWER WIRING FITTING	CONTROL WIRING FITTING	ACCESSORY CONVENIENCE OUTLET WIRING CONNECTOR
CRBTMPWR001A01	THRU THE CURB	3/4" [19] NPT	3/4" [19] NPT	1/2" [12.7] NPT	1/2" [12.7] NPT
CRBTMPWR003A01	THRU THE BOTTOM	1/2" [12.7] NPT			

- NOTES:**
1. ROOF CURB ACCESSORY IS SHIPPED DISASSEMBLED.
  2. INSULATED PANELS: 25.4 [1"] THK. POLYURETHANE FOAM, 44.5 [1.34] # DENSITY.
  3. DIMENSIONS IN [ ] ARE IN MILLIMETERS.
  4. ROOF CURB: 18 GAGE STEEL. (FLANGES OF DUCT REST ON CURB).
  5. SERVICE PLATE: 18 GAGE STEEL. (FLANGES OF DUCT REST ON CURB).
  6. SERVICE CLEARANCE 4 FEET ON EACH SIDE.
  7. DIRECTION OF AIR FLOW.
  8. CONNECTOR PACKAGE CRBTMPWR001A01 IS FOR THRU-THE-CURB GAS TYPE PACKAGE CRBTMPWR003A01 IS FOR THRU-THE-BOTTOM TYPE GAS CONNECTIONS.

582J

